



October 30, 2021	
IGI Report Number	LG500145432
Description	LABORATORY GROWN DIAMOND
Shape and Cutting Style	ROUND BRILLIANT
Measurements	7.18 - 7.21 X 4.52 MM

Carat Weight	1.50 CARAT
Color Grade	G
Clarity Grade	SI 2
Cut Grade	VERY GOOD

Polish	EXCELLENT
Symmetry	EXCELLENT
Fluorescence	NONE
Inscription(s)	LABGROWN IGI LG500145432

Comments: This Laboratory Grown Diamond was created by Chemical Vapor Deposition (CVD) growth process and may include post-growth treatment.
Type IIa

LG500145432

Slightly Thick (Faceted)

58.5%

37.9°

42%

40.1°

62.8%

16%

Pointed

Red symbols indicate internal characteristics.
Green symbols indicate external characteristics.

COLOR GRADING SCALE	CL		NC		FT		VLT		LT	
	COLORLESS D-F		NEAR COLORLESS G-J		FAINT K-M		VERY LIGHT N-R		LIGHT S-Z	
CLARITY (10x) GRADING SCALE	FL	IF	VVS		VS		SI		I	
	FLAWLESS INTERNALLY FLAWLESS		VERY VERY SLIGHTLY INCLUDED		VERY SLIGHTLY INCLUDED		SLIGHTLY INCLUDED		INCLUDED	

The laboratory grown diamond described in this Report (Report) has been graded, tested, analyzed, examined and/or inscribed by International Gemological Institute (I.G.I.). A laboratory grown diamond is one that has essentially the same chemical, physical and optical properties as a natural diamond but is synthetically created (grown) (man-made) (a manufactured product). I.G.I. employs and utilizes those techniques and equipment currently available to I.G.I., including, without limitation, 10X magnification, corrected and uncorrected fluorescence, ultraviolet light, infrared spectroscopy, Raman spectroscopy, measuring device, Diamond Sure™, Diamond View™, Spectrophotometer and such other instruments and/or processes as deemed appropriate by I.G.I. This Report includes advanced security features. A duly accredited gemologist or jeweler can advise you with relevance the importance and interrelationship between cut, color, clarity and carat weight.

THIS REPORT IS NEITHER A GUARANTEE, VALUATION, NOR APPRAISAL OF THE GEMSTONE DESCRIBED HEREIN. PLEASE REVIEW THE LIMITATIONS AND RESTRICTIONS SET FORTH ONLINE. FOR A COMPLETE LIST OF LIMITATIONS AND DISCLAIMERS, PLEASE GO TO WWW.IGI.ORG OR CALL 1-888-BUY-IGI.

© INTERNATIONAL GEMOLOGICAL INSTITUTE, INC.



LABGROWN IGI LG500145432

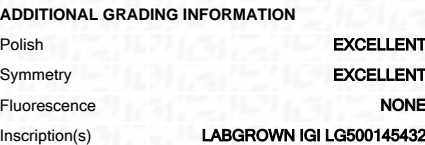
LASERSCRIBESM

© IGI 2020, International Gemological Institute

FD - 10 20

THIS DOCUMENT WAS PRODUCED WITH THE FOLLOWING SECURITY MEASURES: SPECIAL DOCUMENT PAPER, INK SCREENS, WATERMARK, BACKGROUND DESIGNS, HOLOGRAM AND OTHER SECURITY FEATURES NOT LISTED AND DO EXCEED DOCUMENT SECURITY INDUSTRY GUIDELINES

October 30, 2021	
IIGI Report Number	LG5001454323
Description	LABORATORY GROWN DIAMOND
Shape and Cutting Style	ROUND BRILLIANT
Measurements	7.18 - 7.21 X 4.52 MM
GRADING RESULTS	
Carat Weight	1.50 CARAT
Color Grade	G
Clarity Grade	SI 2
Cut Grade	VERY GOOD



Comments: This Laboratory Grown Diamond was created by Chemical Vapor Deposition (CVD) growth process and may include post-growth treatment.
Type IIa



Cut	Poished	Silica	SiO ₂
Polish	EXCELLENT	Very Good	VERY GOOD
Symmetry	EXCELLENT	62%	62%
Fluorescence	NONE	Depth	88.5%
Inscriptions	LARGROWN IGI LG800146432	Table	Slightly Thick (Faceted)
Comments:	The Laboratory Growth Diamond was created by Chemical Vapor Deposition (CVD) growth process and may include post-growth treatments.	G	1.00 CARAT
Type Ia		Color Grade	Faint Weight
		Clarity Grade	1.78 x .721 x 4.52 MM