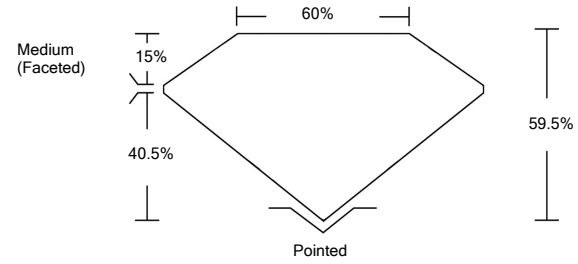




LG472182207

LABORATORY GROWN DIAMOND REPORT

PROPORTIONS



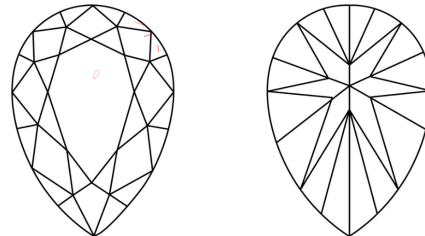
GRADING SCALES

Table with 5 columns for Color Grading Scale (CL to LT) and 5 columns for Clarity (10x) Grading Scale (FL to I).

The laboratory grown diamond described in this Report (Report) has been graded, tested, analyzed, examined and/or inscribed by International Gemological Institute (IGI). A laboratory grown diamond is one that has essentially the same chemical, physical and optical properties as a mined diamond...

© INTERNATIONAL GEMOLOGICAL INSTITUTE, INC.

CLARITY CHARACTERISTICS



KEY TO SYMBOLS

Red symbols indicate internal characteristics. Green symbols indicate external characteristics.

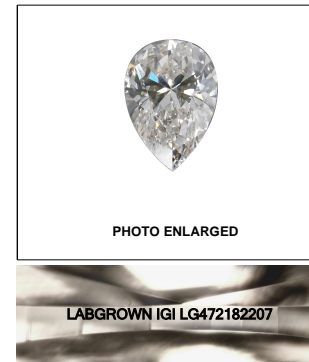


PHOTO ENLARGED

LABGROWN IGI LG472182207

LASERSCRIBE SM

04/23/2021

IGI Report Number LG472182207

Shape and Cutting Style PEAR BRILLIANT

Measurements 9.80 x 6.18 x 3.68 mm

GRADING RESULTS

Carat Weight 1.32 CARAT

Color Grade G

Clarity Grade VS 2

ADDITIONAL GRADING INFORMATION

Polish EXCELLENT

Symmetry EXCELLENT

Fluorescence NONE

Inscription(s) LABGROWN IGI LG472182207

Comments: This Laboratory Grown Diamond was created by Chemical Vapor Deposition (CVD) growth process and may include post-growth treatment. Type IIa



IGI

04/23/2021 IGI Report No. LG472182207 PEAR BRILLIANT 9.80 x 6.18 x 3.68 mm Color Grade G Clarity Grade VS 2 Depth 60% Girdle Medium (Faceted) Culet Pointed Polish EXCELLENT Symmetry EXCELLENT Fluorescence NONE Inscription(s) LABGROWN IGI LG472182207

This Laboratory Grown Diamond was created by Chemical Vapor Deposition (CVD) growth process and may include post-growth treatment. Type IIa

