



LABORATORY GROWN DIAMOND REPORT

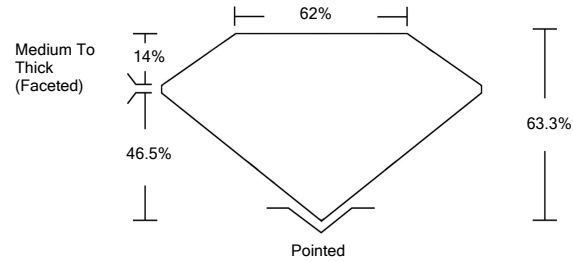
LG476156403

GRADING SCALES

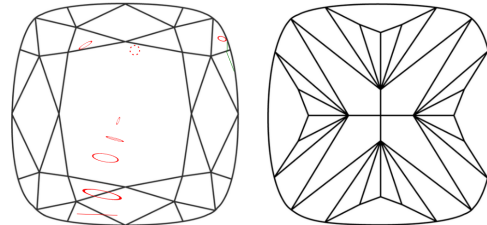
Table with 5 columns: COLOR GRADING SCALE (CL, NC, FT, VLT, LT), CLARITY (10x) GRADING SCALE (FL, IF, VVS, VS, SI, I). Includes color descriptions like 'COLORLESS D-F', 'NEAR COLORLESS G-J', etc.

The laboratory grown diamond described in this Report (Report) has been graded, tested, analyzed, examined and/or inscribed by International Gemological Institute (IGI). A laboratory grown diamond is one that has essentially the same chemical, physical and optical properties as a mined diamond...

PROPORTIONS

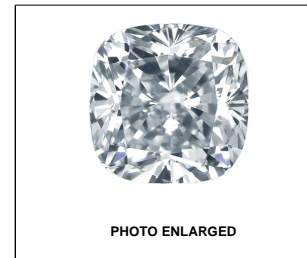


CLARITY CHARACTERISTICS



KEY TO SYMBOLS

Red symbols indicate internal characteristics. Green symbols indicate external characteristics.



LABGROWN IGI LG476156403

LASERSCRIBESM

05/17/2021

IGI Report Number LG476156403

Shape and Cutting Style SQUARE CUSHION MODIFIED BRILLIANT

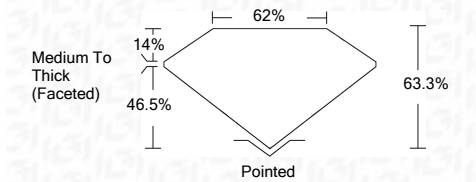
Measurements 7.53 x 7.42 x 4.70 mm

GRADING RESULTS

Carat Weight 2.02 CARATS

Color Grade F

Clarity Grade SI 2



ADDITIONAL GRADING INFORMATION

Polish EXCELLENT

Symmetry VERY GOOD

Fluorescence NONE

Inscription(s) LABGROWN IGI LG476156403

Comments: As Grown - No indication of post-growth treatment. This Laboratory Grown Diamond was created by High Pressure High Temperature (HPHT) growth process. Type II



05/17/2021 IGI Report No. LG476156403 SQUARE CUSHION MODIFIED BRILLIANT 7.53 x 7.42 x 4.70 mm 2.02 CARATS F SI 2 63.3% 62% Medium To Thick (Faceted) Pointed EXCELLENT VERY GOOD NONE LABGROWN IGI LG476156403

As Grown - No indication of post-growth treatment. This Laboratory Grown Diamond was created by High Pressure High Temperature (HPHT) growth process. Type II

