



**ELECTRONIC COPY**

LABORATORY GROWN  
DIAMOND REPORT

LABORATORY GROWN DIAMOND REPORT

## LABORATORY GROWN DIAMOND REPORT

July 29, 2021	
IGI Report Number	LG487193458
Description	LABORATORY GROWN DIAMOND
Shape and Cutting Style	CUSHION MODIFIED BRILLIANT
Measurements	7.05 X 6.17 X 4.07 MM

## GRADING RESULTS

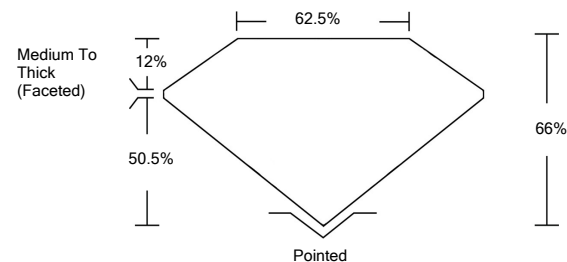
Carat Weight	1.37 CARAT
Color Grade	D
Clarity Grade	VS 1

### ADDITIONAL GRADING INFORMATION

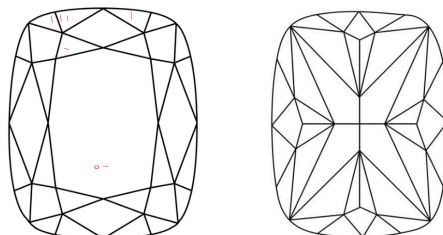
Polish	EXCELLENT
Symmetry	EXCELLENT
Fluorescence	NONE
Inscription(s)	LABGROWN IGI LG487193458

Comments: As Grown - No indication of post-growth treatment.  
This Laboratory Grown Diamond was created by High Pressure High Temperature (HPHT) growth process.  
Type II

## PROPORTIONS



## CLARITY CHARACTERISTICS



## KEY TO SYMBOLS

Red symbols indicate internal characteristics.  
Green symbols indicate external characteristics.

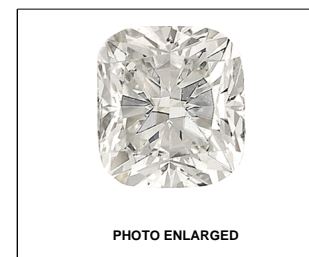
## GRADING SCALES

COLOR GRADING SCALE	CL		NC		FT		VLT		LT	
	COLORLESS D-F		NEAR COLORLESS G-J		FAINT K-M		VERY LIGHT N-R		LIGHT S-Z	
CLARITY (10x) GRADING SCALE	FL IF		VVS		VS		SI		I	
	FLAWLESS INTERNALLY FLAWLESS		VERY VERY SLIGHTLY INCLUDED		VERY SLIGHTLY INCLUDED		SLIGHTLY INCLUDED		INCLUDED	

The laboratory growdiamond described in this Report ("Report") has been graded, tested, analyzed, examined and/or inscribed by International Gemological Institute ("IGI"). A laboratory grown diamond is one that has essentially the same chemical, physical and optical properties as a mined diamond, with the exception of being grown by man rather than nature. IGI's grading system includes the following techniques and equipment currently available to IGI, including, without limitation, 10X magnification, corrected triplet loupe, binocular microscope, master color comparison stones, non-contact-optical spectrometer, ultraviolet fluorescence spectrometer, Fourier transform infrared instruments and/or processes as deemed appropriate by IGI. This Report includes advanced security features. A duly accredited gemologist or jeweler can advise you with respect to the importance of and interrelationship between cut, color, clarity and carat weight.

**THIS REPORT IS NEITHER A GUARANTEE, VALUATION, NOR APPRAISAL OF THE GEMSTONE DESCRIBED HEREIN. PLEASE CONSULT THE LIMITATIONS AND RESTRICTIONS SET FORTH ONLINE FOR THIS REPORT. INFORMATION REGARDING THESE LIMITATIONS AND DISCLAIMERS, PLEASE GO TO WWW.IGILABS.COM OR CALL 866-979-1618**

© INTERNATIONAL GEMOLOGICAL INSTITUTE, INC.

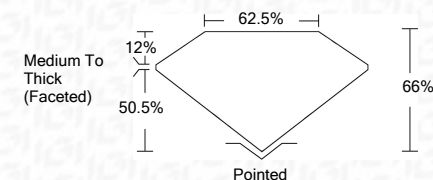
LASERSCRIBE<sup>SM</sup>

© IGI 2020, International Gemological Institute

FD - 10 20

**www.igi.org**

July 29, 2021	
IGI Report Number	LG487193458
Description	LABORATORY GROWN DIAMOND
Shape and Cutting Style	CUSHION MODIFIED BRILLIANT
Measurements	7.05 X 6.17 X 4.07 MM
GRADING RESULTS	
Carat Weight	1.37 CARAT
Color Grade	D
Clarity Grade	VS 1



### ADDITIONAL GRADING INFORMATION

Polish	EXCELLENT
Symmetry	EXCELLENT
Fluorescence	NONE
Inscription(s)	LABGROWN IGI LG487193458

Comments: As Grown - No indication of post-growth treatment.  
This Laboratory Grown Diamond was created by High Pressure High Temperature (HPHT) growth process.  
Type II



July 29, 2021	IGI Report No LG487193458	
CUSHION MODIFIED BRILLIANT		
1.37 CARAT	1.05 X 0.67 X 4.07 MM	
D	Color Grade	
VS 1	Clarity Grade	
86%	Depth	
62.5%	Table	
Medium To Thick (Faceted)	Girdle	
Pointed	Culet	
EXCELLENT	Polish	
EXCELLENT	Symmetry	
NONE	Fluorescence	
LG487193458	Inscriptions	
Comments:		
		As Graded - No indication of post-growth treatment.
		This Laboratory Grown Diamond was created by High Pressure High Temperature (HPHT) growth process.
		Type II