



ELECTRONIC COPY

LABORATORY GROWN
DIAMOND REPORT

LABORATORY GROWN DIAMOND REPORT

LABORATORY GROWN DIAMOND REPORT

August 26, 2021

IGI Report Number **LG487111660**

Description	LABORATORY GROWN DIAMOND
Shape and Cutting Style	OVAL BRILLIANT

Measurements	10.90 X 7.73 X 4.86 MM
--------------	------------------------

GRADING RESULTS

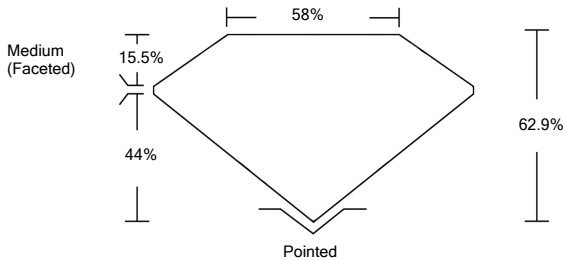
Carat Weight	2.54 CARATS
Color Grade	F
Clarity Grade	VS 2

ADDITIONAL GRADING INFORMATION

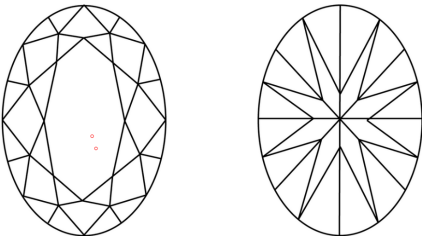
Polish	EXCELLENT
Symmetry	EXCELLENT
Fluorescence	NONE
Inscription(s)	LABGROWN IGI LG487111660

Comments: This Laboratory Grown Diamond was created by Chemical Vapor Deposition (CVD) growth process and may include post-growth treatment.
Type IIa

PROPORTIONS



CLARITY CHARACTERISTICS



KEY TO SYMBOLS

Red symbols indicate internal characteristics.
Green symbols indicate external characteristics.

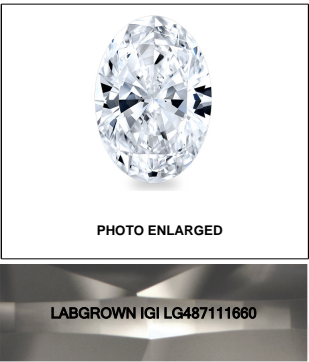
GRADING SCALES

COLOR GRADING SCALE	CL		NC		FT		VLT		LT	
	COLORLESS D-F		NEAR COLORLESS G-J		FAINT K-M		VERY LIGHT N-R		LIGHT S-Z	
CLARITY (10x) GRADING SCALE	FL	IF	VVS		VS		SI		I	
	FLAWLESS INTERNALLY FLAWLESS		VERY VERY SLIGHTLY INCLUDED		VERY SLIGHTLY INCLUDED		SLIGHTLY INCLUDED		INCLUDED	

The laboratory grown diamond described in this Report ("Report") has been graded, tested, analyzed, examined and/or inscribed by International Gemological Institute ("IGI"). A laboratory grown diamond is one that has essentially the same chemical, physical and optical properties as a natural diamond, but is synthesized by a human (man) (a manufactured product). IGI employs and utilizes those techniques and equipment currently available to IGI, including, without limitation, 10X magnification, corrected and uncorrected color, fluorescence, ultraviolet fluorescence, ultraviolet fluorescence measuring device, Diamond Sure™, Diamond View™, Spectrophotometer and such other instruments and/or processes as deemed appropriate by IGI. This Report includes advanced security features. A duly accredited gemologist or jeweler can advise you with regard to the importance of and interrelationship between cut, color, clarity and carat weight.

THIS REPORT IS NEITHER A GUARANTEE, VALUATION, NOR APPRAISAL OF THE GEMSTONE DESCRIBED HEREIN. PLEASE CONSULT WITH AN INDEPENDENT APPRAISER FOR AN APPRAISAL. LIMITATIONS AND RESTRICTIONS SET FORTH ONLINE. FOR A COMPLETE LIST OF LIMITATIONS AND DISCLAIMERS, PLEASE GO TO WWW.IGI.ORG OR CALL 1-888-BUY-IGI.

© INTERNATIONAL GEMOLOGICAL INSTITUTE, INC.

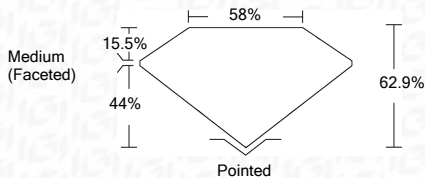
**LASERSCRIBESM**

© IGI 2020, International Gemological Institute

FD - 10 20

www.igi.org

August 26, 2021	
IGI Report Number	LG487111660
Description	LABORATORY GROWN DIAMOND
Shape and Cutting Style	OVAL BRILLIANT
Measurements	10.90 X 7.73 X 4.86 MM
GRADING RESULTS	
Carat Weight	2.54 CARAT(S)
Color Grade	F
Clarity Grade	VS 2



ADDITIONAL GRADING INFORMATION

Polish	EXCELLENT
Symmetry	EXCELLENT
Fluorescence	NONE
Inscription(s)	LABGROWN IGI LG487111660

Comments: This Laboratory Grown Diamond was created by Chemical Vapor Deposition (CVD) growth process and may include post-growth treatment.
Type IIa



IGI

August 25, 2021	IGI Report No LG48711680	2.54 CARATS	F	VS 2	62.9%	58%	Medium (Faceted)	Pointed	EXCELLENT	EXCELLENT	NONE	LABGROWN (IGI LG48711680)	Comments:	This Laboratory Grown Diamond was created by Chemical Vapor Deposition (CVD) growth process and may include surface treatment.	Type I
OVAL BRILLIANT	Carat Weight	10.90 x 7.73 x 4.86 MM	Color Grade	Clarity Grade	Depth	Table	Girdle	Culet	Polish	Symmetry	Fluorescence	Inscription(s)			

This Laboratory Grown Diamond was created by Chemical Vapor Deposition (CVD) growth process and may include post-growth treatment.
Type IIa