



06/13/2021	
IGI Report Number	LG472160981
Shape and Cutting Style	ROUND BRILLIANT
Measurements	7.25 - 7.31 x 4.62 mm
GRADING RESULTS	
Carat Weight	1.51 CARAT
Color Grade	G
Clarity Grade	SI 1
Cut Grade	EXCELLENT
ADDITIONAL GRADING INFORMATION	
Polish	EXCELLENT
Symmetry	EXCELLENT
Fluorescence	NONE
Inscription(s)	LABGROWN IGI LG472160981

LG472160981

Medium To Slightly Thick (Faceted)

58.5%

15%

36°

41.8°

44.5%

63.5%

Pointed

Red symbols indicate internal characteristics.  
Green symbols indicate external characteristics.

COLOR GRADING SCALE	CL		NC		FT		VLT		LT	
	COLORLESS D-F		NEAR COLORLESS G-J		FAINT K-M		VERY LIGHT N-R		LIGHT S-Z	
CLARITY (10x) GRADING SCALE	FL IF		VVS		VS		SI		I	
	FLAWLESS INTERNALLY FLAWLESS		VERY VERY SLIGHTLY INCLUDED		VERY SLIGHTLY INCLUDED		SLIGHTLY INCLUDED		INCLUDED	

© INTERNATIONAL GEMOLOGICAL INSTITUTE, INC.

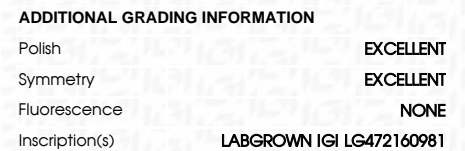
LASERSCRIBE<sup>SM</sup>

FD - 10 20

THIS DOCUMENT WAS PRODUCED WITH THE FOLLOWING SECURITY MEASURES: SPECIAL DOCUMENT PAPER, INK SCREENS, WATERMARK BACKGROUND DESIGNS, HOLOGRAM AND OTHER SECURITY FEATURES NOT LISTED AND DO EXCEED DOCUMENT SECURITY INDUSTRY GUIDELINES

## LABORATORY GROWN DIAMOND REPORT

GRADING RESULTS	
Carat Weight	1.51 CARAT
Color Grade	G
Clarity Grade	SI 1
Cut Grade	EXCELLENT



05/13/2021	IGI Report No. LG47216981	
ROUND BRILLIANT	1.51 CARAT	
2.25 - 7.31 x 4.62 mm	G	
Color Grade	S11	
Clarity Grade	EXCELLENT	
Cut Grade	VS5	
Depth	58.5%	
Table	Medium to slightly Thick (Feathered)	
Girdle		
Culet	Pointed	
Polish	EXCELLENT	
Symmetry	EXCELLENT	
Fluorescence	NONE	
Inscriptions	LABGROWN IGI LG47216981	
Comments:	This Laboratory Grown Diamond was created by Chemical Vapor Deposition (CVD) growth process and has no post-growth treatment type IIA	