



03/15/2021	
IGI Report Number	LG467123590
Shape and Cutting Style	PRINCESS CUT
Measurements	6.42 x 6.34 x 4.64 mm
GRADING RESULTS	
Carat Weight	1.62 CARAT
Color Grade	F
Clarity Grade	VS 2
ADDITIONAL GRADING INFORMATION	
Polish	EXCELLENT
Symmetry	EXCELLENT
Fluorescence	NONE
Inscription(s)	LABGROWN IGI LG467123590

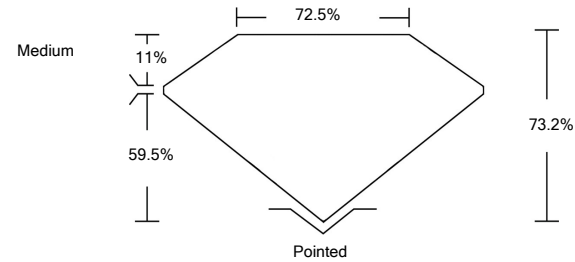
Comments: This Laboratory Grown Diamond was created by Chemical Vapor Deposition (CVD) growth process and may include post-growth treatment.  
Type IIa



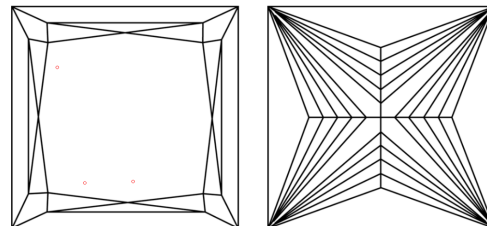
**ELECTRONIC COPY**

LG467123590

## PROPORTIONS



## CLARITY CHARACTERISTICS



## KEY TO SYMBOLS

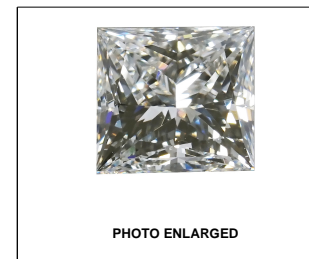
Red symbols indicate internal characteristics.  
Green symbols indicate external characteristics.

## GRADING SCALES

COLOR GRADING SCALE	CL		NC		FT		VLT		LT	
	COLORLESS D-F		NEAR COLORLESS G-J		FAINT K-M		VERY LIGHT N-R		LIGHT S-Z	
CLARITY (10x) GRADING SCALE	FL IF		VVS		VS		SI		I	
	FLAWLESS INTERNALLY FLAWLESS		VERY VERY SLIGHTLY INCLUDED		SLIGHTLY INCLUDED		INCLUDED			

The laboratory growdiamond described in this Report (Report) has been graded, tested, analyzed, examined and/or inscribed by International Gemological Institute (IGI). A laboratory grown diamond is one that has essentially the same chemical, physical and optical characteristics as a natural diamond. IGI is a laboratory owned and operated by a man (a manufactured product). IGI employs and utilizes those techniques and equipment currently available to IGI, including, without limitation, 10X magnification, corrected triplet loupe, binocular microscope, master color comparison stones, non-contact-optical spectrophotometer, and/or other instruments and/or processes as deemed appropriate by IGI. This Report includes advanced security features. A duly accredited gemologist or jeweler can advise you with respect to the importance of and interrelationship between cut, color, clarity and carat weight.

**THIS REPORT IS NEITHER A GUARANTEE, VALUATION, NOR APPRAISAL OF THE GEMSTONE DESCRIBED HEREIN. PLEASE REVIEW THE LIMITATIONS AND RESTRICTIONS SET FORTH ONLINE. FOR ADDITIONAL INFORMATION REGARDING THE LIMITATIONS AND DISCLAIMERS, PLEASE GO TO [WWW.IGI.ORG](http://WWW.IGI.ORG) OR CALL 1-888-BUY-IGI.**



**LABGROWN IGI LG467123590**

LASERSCRIBE<sup>SM</sup>

© IGI 2020, International Gemological Institute

FD - 10 20

THIS DOCUMENT WAS PRODUCED WITH THE FOLLOWING SECURITY MEASURES: SPECIAL DOCUMENT PAPER, INK SCREENS, WATERMARK, BACKGROUND DESIGNS, HOLOGRAM AND OTHER SECURITY FEATURES NOT LISTED AND DO EXCEED DOCUMENT SECURITY INDUSTRY GUIDELINE

## LABORATORY GROWN DIAMOND REPORT

03/15/2021

IGI Report Number **LG467123590**Shape and Cutting Style **PRINCESS CUT**

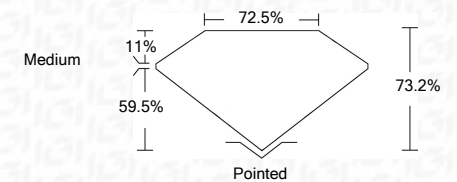
Measurements **6.42 x 6.34 x 4.64 mm**

## GRADING RESULTS

Carat Weight **1.62 CARAT**

Color Grade **F**

Clarity Grade **VS 2**



### ADDITIONAL GRADING INFORMATION

Polish **EXCELLENT**

Symmetry **EXCELLENT**

Fluorescence **NONE**

Inscription(s) **LABGROWN IGI LG467123590**

Comments: This Laboratory Grown Diamond was created by Chemical Vapor Deposition (CVD) growth process and may include post-growth treatment.  
Type IIa



IGI

03/15/2021	IGI Report No. LG467123590	1.02 CARAT
PRINCESS CUT		F
4.42 x 6.34 x 4.64 mm	VS 2	73.2%
Carat Weight	Depth	72.5%
Color Grade	Table	Medium
	Girdle	
	Culet	Pointed
	Polish	EXCELLENT
	Symmetry	EXCELLENT
Fluorescence		NONE
Inscription(s)		LARGROWN IGI LG467123590
Comments:		
This Laboratory Grown Diamond was created by Chemical Vapor Deposition (CVD) growth process and may include post-growth treatment.		
Type IIIa		