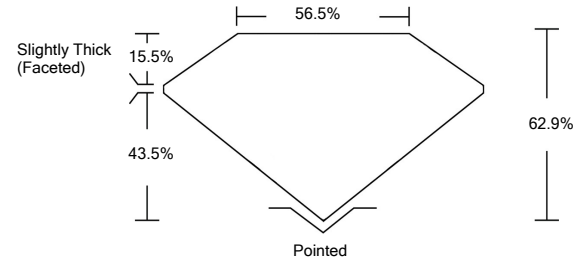




LG464100021

LABORATORY GROWN DIAMOND REPORT

PROPORTIONS



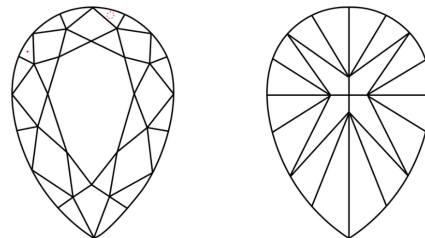
GRADING SCALES

Table with 5 columns for Color Grading Scale (CL to LT) and Clarity (10x) Grading Scale (FL to I). Includes sub-labels like 'COLORLESS D-F', 'NEAR COLORLESS G-J', etc.

The laboratory grown diamond described in this Report (Report) has been graded, tested, analyzed, examined and/or inscribed by International Gemological Institute (IGI). A laboratory grown diamond is one that has essentially the same chemical, physical and optical properties as a mined diamond...

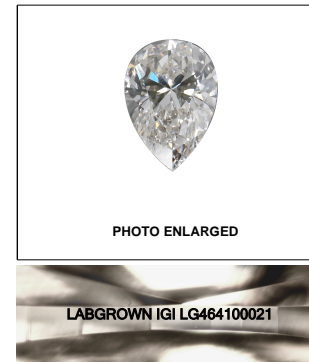
© INTERNATIONAL GEMOLOGICAL INSTITUTE, INC.

CLARITY CHARACTERISTICS



KEY TO SYMBOLS

Red symbols indicate internal characteristics. Green symbols indicate external characteristics.



LASERSCRIBESM

02/17/2021

IGI Report Number LG464100021

Shape and Cutting Style PEAR BRILLIANT

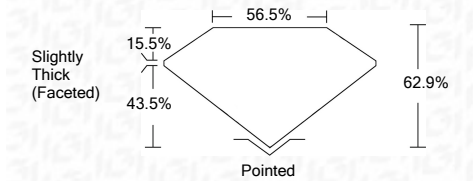
Measurements 11.01 x 7.08 x 4.45 mm

GRADING RESULTS

Carat Weight 2.03 CARATS

Color Grade G

Clarity Grade VS 1



ADDITIONAL GRADING INFORMATION

Polish EXCELLENT

Symmetry EXCELLENT

Fluorescence NONE

Inscription(s) LABGROWN IGI LG464100021

Comments: This Laboratory Grown Diamond was created by Chemical Vapor Deposition (CVD) growth process and may include post-growth treatment. Type IIa



IGI

Summary table with columns for Report No, Shape, Measurements, Carat Weight, Color Grade, Clarity Grade, Depth, Table, Girdle, Culet, Polish, Symmetry, Fluorescence, Inscription(s), and Comments.

