



LG457065745

LABORATORY GROWN DIAMOND REPORT

01/07/2021 IGI Report Number LG457065745 Shape and Cutting Style OVAL BRILLIANT Measurements 7.63 x 5.65 x 3.57 mm

GRADING RESULTS

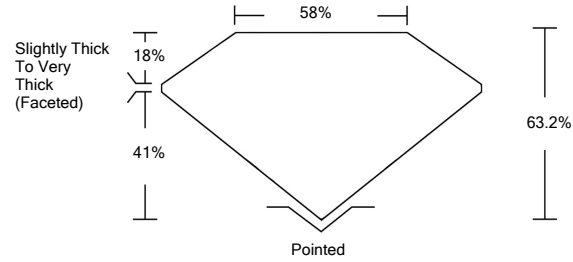
Carat Weight 1.00 CARAT Color Grade D Clarity Grade SI 1

ADDITIONAL GRADING INFORMATION

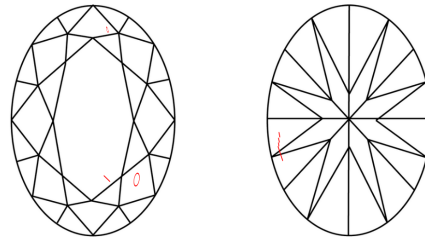
Polish EXCELLENT Symmetry VERY GOOD Fluorescence NONE Inscription(s) LABGROWN IGI LG457065745

Comments: As Grown - No indication of post-growth treatment. This Laboratory Grown Diamond was created by High Pressure High Temperature (HPHT) growth process. Type II

PROPORTIONS



CLARITY CHARACTERISTICS



KEY TO SYMBOLS

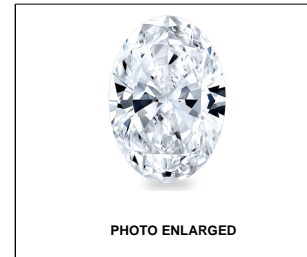
Red symbols indicate internal characteristics. Green symbols indicate external characteristics.

GRADING SCALES

Table with 5 columns for Color Grading Scale (CL, NC, FT, VLT, LT) and Clarity (10x) Grading Scale (FL, IF, VVS, VS, SI, I).

The laboratory grown diamond described in this Report (Report) has been graded, tested, analyzed, examined and/or inscribed by International Gemological Institute (IGI). A laboratory grown diamond is one that has essentially the same chemical, physical and optical properties as a mined diamond...

© INTERNATIONAL GEMOLOGICAL INSTITUTE, INC.



LASERSCRIBE SM

01/07/2021 IGI Report Number LG457065745 Shape and Cutting Style OVAL BRILLIANT Measurements 7.63 x 5.65 x 3.57 mm

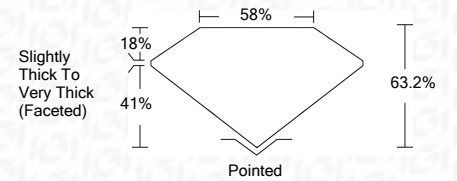
GRADING RESULTS

Carat Weight 1.00 CARAT Color Grade D Clarity Grade SI 1

ADDITIONAL GRADING INFORMATION

Polish EXCELLENT Symmetry VERY GOOD Fluorescence NONE Inscription(s) LABGROWN IGI LG457065745

Comments: As Grown - No indication of post-growth treatment. This Laboratory Grown Diamond was created by High Pressure High Temperature (HPHT) growth process. Type II



IGI

01/07/2021 IGI Report No. LG457065745 OVAL BRILLIANT 7.63 x 5.65 x 3.57 mm 1.00 CARAT D SI 1 63.2% 58% Slightly Thick To Very Thick (Faceted) Pointed EXCELLENT VERY GOOD NONE LABGROWN IGI LG457065745 Comments: As Grown - No indication of post-growth treatment. This Laboratory Grown Diamond was created by High Pressure High Temperature (HPHT) growth process. Type II