



ELECTRONIC COPY

LG457046555

IGI GEMOLOGICAL REPORT

IGI LABORATORY GROWN DIAMOND GRADING REPORT

12/28/2020 IGI Report Number LG457046555

Shape and Cutting Style OVAL BRILLIANT

Measurements 7.74 X 5.62 X 3.61 MM

GRADING RESULTS

Carat Weight 1.00 CARAT

Color Grade D

Clarity Grade SI 1

ADDITIONAL GRADING INFORMATION

Polish EXCELLENT

Symmetry EXCELLENT

Fluorescence NONE

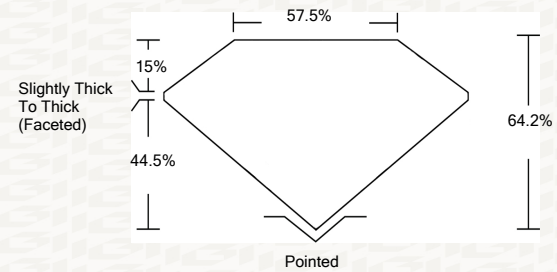
Inscription(s) LABGROWN IGI LG457046555

Comments: This Laboratory Grown Diamond was created by High Pressure High Temperature (HPHT) growth process. Type II

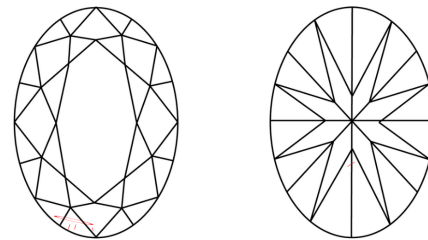


ADDITIONAL INFORMATION

PROPORTIONS



CLARITY CHARACTERISTICS



KEY TO SYMBOLS

Red symbols indicate internal characteristics. Green symbols indicate external characteristics.

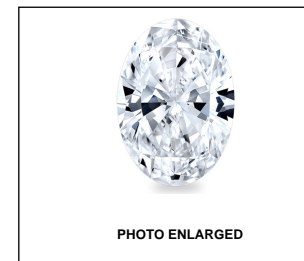
This Report is subject to the terms and conditions

© IGI 2000, edition 2019 all rights reserved.

GRADING SCALES

Table with 5 columns for Color Grading Scale (CL, NC, FT, VLT, LT) and 5 columns for Clarity (10x) Grading Scale (FL, IF, VVS, VS, SI, I). Includes sub-labels like 'COLORLESS D-F', 'NEAR COLORLESS G-J', etc.

The laboratory grown diamond described in this Report ("Report") has been graded, tested, analyzed, examined and/or inscribed by International Gemological Institute (IGI). A laboratory grown diamond is one that has essentially the same chemical, physical and optical properties as a mined diamond...



LASERSCRIBE SM



IGI LABORATORY GROWN DIAMOND GRADING REPORT

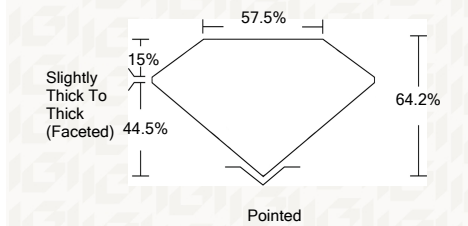
12/28/2020 IGI Report Number LG457046555 Shape and Cutting Style OVAL BRILLIANT Measurements 7.74 X 5.62 X 3.61 MM

GRADING RESULTS

Carat Weight 1.00 CARAT

Color Grade D

Clarity Grade SI 1



ADDITIONAL GRADING INFORMATION

Polish EXCELLENT

Symmetry EXCELLENT

Fluorescence NONE

Inscription(s) LABGROWN IGI LG457046555

Comments: This Laboratory Grown Diamond was created by High Pressure High Temperature (HPHT) growth process. Type II



IGI

Summary table of report details: 12/28/2020, IGI Report No LG457046555, OVAL BRILLIANT, 7.74 X 5.62 X 3.61 MM, Carat Weight 1.00 CARAT, Color Grade D, Clarity Grade SI 1, Depth 64.2%, Table 57.5%, Girdle Slightly Thick To Thick (Faceted), Culet Polished, Polish EXCELLENT, Symmetry EXCELLENT, Fluorescence NONE, Inscription(s) LABGROWN IGI LG457046555. Comments: This Laboratory Grown Diamond was created by High Pressure High Temperature (HPHT) growth process. Type II