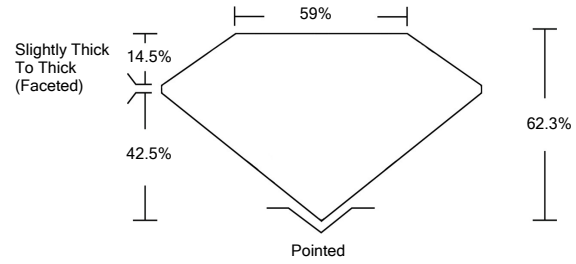




LG468103304

LABORATORY GROWN DIAMOND REPORT

PROPORTIONS



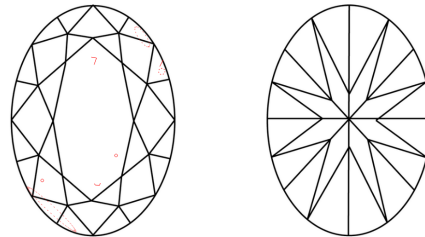
GRADING SCALES

Table with 5 columns for Color (CL, NC, FT, VLT, LT) and Clarity (FL, IF, VVS, VS, SI, I) with corresponding descriptions like 'COLORLESS D-F', 'NEAR COLORLESS G-J', etc.

The laboratory grown diamond described in this Report (Report) has been graded, tested, analyzed, examined and/or inscribed by International Gemological Institute (IGI). A laboratory grown diamond is one that has essentially the same chemical, physical and optical properties as a mined diamond...

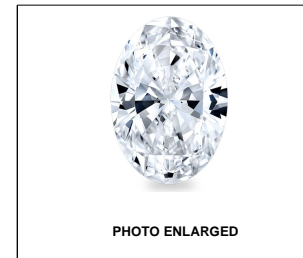
© INTERNATIONAL GEMOLOGICAL INSTITUTE, INC.

CLARITY CHARACTERISTICS



KEY TO SYMBOLS

Red symbols indicate internal characteristics. Green symbols indicate external characteristics.



LABGROWN IGI LG468103304

LASERSCRIBESM

03/23/2021

IGI Report Number LG468103304

Shape and Cutting Style OVAL BRILLIANT

Measurements 11.51 x 8.20 x 5.11 mm

GRADING RESULTS

Carat Weight 3.02 CARATS

Color Grade G

Clarity Grade VS 2

ADDITIONAL GRADING INFORMATION

Polish EXCELLENT

Symmetry EXCELLENT

Fluorescence NONE

Inscription(s) LABGROWN IGI LG468103304

Comments: This Laboratory Grown Diamond was created by Chemical Vapor Deposition (CVD) growth process and may include post-growth treatment. Type IIa



IGI

03/23/2021 IGI Report No. LG468103304 OVAL BRILLIANT 11.51 x 8.20 x 5.11 mm 3.02 CARATS G VS 2 62.3% 59% Slightly Thick To Thick (Faceted) Pointed EXCELLENT EXCELLENT NONE LABGROWN IGI LG468103304

This Laboratory Grown Diamond was created by Chemical Vapor Deposition (CVD) growth process and may include post-growth treatment. Type IIa

