



IGI GEMOLOGICAL REPORT

IGI LABORATORY GROWN DIAMOND GRADING REPORT

11/23/2020
IGI Report Number **LG450047579**

Shape and Cutting Style **OVAL BRILLIANT**

Measurements **9.77 X 7.26 X 4.53 MM**

GRADING RESULTS

Carat Weight **2.02 CARATS**

Color Grade **D**

Clarity Grade **VS 1**

ADDITIONAL GRADING INFORMATION

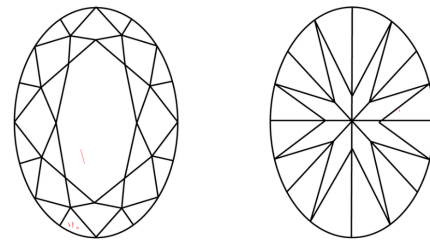
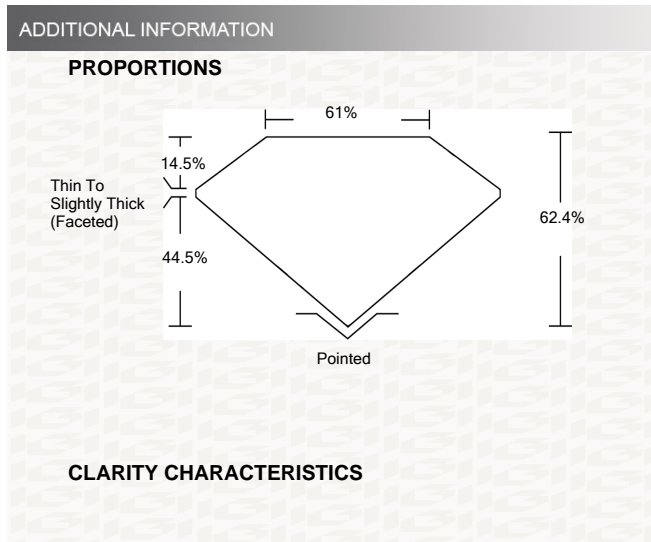
Polish **EXCELLENT**

Symmetry **VERY GOOD**

Fluorescence **NONE**

Inscription(s) **LABGROWN IGI LG450047579**

Comments: This Laboratory grown diamond was created by high pressure high temperature process (HPHT) Type II



KEY TO SYMBOLS

Red symbols indicate internal characteristics.
Green symbols indicate external characteristics.

This Report is subject to the terms and conditions

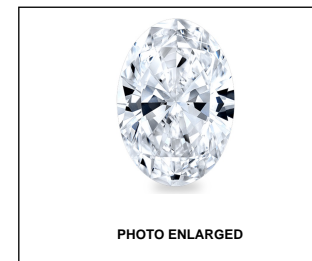
© IGI 2000, edition 2019 all rights reserved.

GRADING SCALES

COLOR GRADING SCALE	CL	NC	FT	VLT	LT
	COLORLESS D-F	NEAR COLORLESS G-J	FAINT K-M	VERY LIGHT N-R	LIGHT S-Z
CLARITY (10X) GRADING SCALE	FL	VVS	VS	SI	I
	FLAWLESS INTERNALLY FLAWLESS	VERY VERY SLIGHTLY INCLUDED	VERY SLIGHTLY INCLUDED	SLIGHTLY INCLUDED	INCLUDED

The laboratory grown diamond described in this Report ("Report") has been graded, tested, analyzed, examined and/or inscribed by International Gemological Institute (I.G.I.). A laboratory grown diamond is one that has essentially the same chemical, physical and optical properties as a mined diamond, with the exception of being grown by man (a manufactured product). I.G.I. employs and utilizes those techniques and equipment currently available to I.G.I., including, without limitation, 10X magnification, corrected triplet loupe, binocular microscope, master color comparison stones, non-contact-optical measuring device, Diamond Sure™, Diamond View™, Spectrophotometer and such other instruments and/or processes as deemed appropriate by I.G.I. This Report includes advanced security features. A duly accredited gemologist or jeweler can advise you with respect to the importance of and interrelationship between cut, color, clarity and carat weight. THIS REPORT IS NEITHER A GUARANTEE, VALUATION, NOR APPRAISAL OF THE GEMSTONE DESCRIBED HEREIN. PLEASE REVIEW THE LIMITATIONS AND RESTRICTIONS SET FORTH ONLINE. FOR ADDITIONAL INFORMATION, IMPORTANT LIMITATIONS AND DISCLAIMERS, PLEASE GO TO WWW.IGI.ORG OR CALL 1-888-BUY-IGIS.

© INTERNATIONAL GEMOLOGICAL INSTITUTE, INC.



LABGROWN IGI LG450047579

LASERSCRIBE SM



IGI LABORATORY GROWN DIAMOND GRADING REPORT

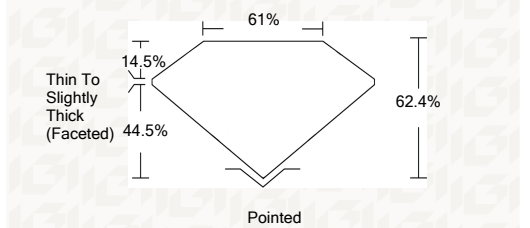
11/23/2020
IGI Report Number **LG450047579**
Shape and Cutting Style **OVAL BRILLIANT**
Measurements **9.77 X 7.26 X 4.53 MM**

GRADING RESULTS

Carat Weight **2.02 CARATS**

Color Grade **D**

Clarity Grade **VS 1**



ADDITIONAL GRADING INFORMATION

Polish **EXCELLENT**

Symmetry **VERY GOOD**

Fluorescence **NONE**

Inscription(s) **LABGROWN IGI LG450047579**

Comments: This Laboratory grown diamond was created by high pressure high temperature process (HPHT) Type II



11/23/2020	IGI Report No LG450047579	VS 1
OVAL BRILLIANT	9.77 X 7.26 X 4.53 MM	62.4%
Carat Weight 2.02 CARATS	Color Grade D	61%
Clarity Grade VS 1	Thin To Slightly Thick (Faceted)	Pointed
Depth 62.4%	Table 14.5%	Polish EXCELLENT
Girdle 44.5%	Color D	Symmetry VERY GOOD
Pointed	Fluorescence NONE	Inscription(s) LABGROWN IGI LG450047579
Comments: This Laboratory grown diamond was created by high pressure high temperature process (HPHT) Type II		