



|                                |                          |
|--------------------------------|--------------------------|
| 01/25/2021                     |                          |
| IGI Report Number              | LG459196045              |
| Shape and Cutting Style        | EMERALD CUT              |
| Measurements                   | 7.08 x 4.75 x 3.20 mm    |
| GRADING RESULTS                |                          |
| Carat Weight                   | 1.09 CARAT               |
| Color Grade                    | D                        |
| Clarity Grade                  | VS 2                     |
| ADDITIONAL GRADING INFORMATION |                          |
| Polish                         | EXCELLENT                |
| Symmetry                       | VERY GOOD                |
| Fluorescence                   | NONE                     |
| Inscription(s)                 | LABGROWN IGI LG459196045 |

Comments: As Grown - No indication of post-growth treatment.  
This Laboratory Grown Diamond was created by High Pressure High Temperature (HPHT) growth process.  
Type II



LG459196045

Diagram illustrating the cross-section of a diamond-shaped structure, showing dimensions and labels:

- Top width: 65.5%
- Top-left corner: 14.5%
- Left side: 48%
- Right side: 67.4%
- Bottom width: Long
- Label: Slightly Thick (pointing to the top-left corner)

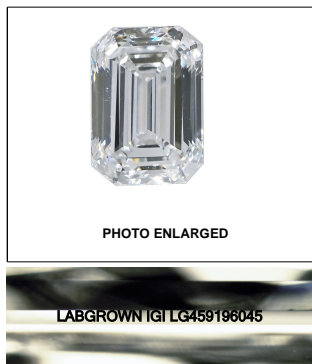
Red symbols indicate internal characteristics.  
Green symbols indicate external characteristics.

## LABORATORY GROWN DIAMOND REPORT

| COLOR GRADING SCALE         | CL                           |    | NC                          |  | FT                     |  | VLT               |  | LT        |  |
|-----------------------------|------------------------------|----|-----------------------------|--|------------------------|--|-------------------|--|-----------|--|
|                             | COLORLESS D-F                |    | NEAR COLORLESS G-J          |  | FAINT K-M              |  | VERY LIGHT N-R    |  | LIGHT S-Z |  |
| CLARITY (10x) GRADING SCALE | FL                           | IF | VVS                         |  | VS                     |  | SI                |  | I         |  |
|                             | FLAWLESS INTERNALLY FLAWLESS |    | VERY VERY SLIGHTLY INCLUDED |  | VERY SLIGHTLY INCLUDED |  | SLIGHTLY INCLUDED |  | INCLUDED  |  |

The laboratory grown diamond described in this Report (Report) has been graded, tested, analyzed, examined and/or inscribed by International Gemological Institute (I.G.I.). A laboratory grown diamond is one that has essentially the same chemical, physical and optical properties as a natural diamond. I.G.I. employs and utilizes those techniques and equipment currently available to I.G.I., including, without limitation, 10X magnification, corrected triplet loupe, binocular microscope, master color comparison stones, non-contact-optical spectrophotometer, diamond grading microscope, and other instruments and/or processes as deemed appropriate by I.G.I. This Report includes advanced security features. A duly accredited gemologist or jeweler can advise you with regard to the importance of and interrelationship between color, clarity and carat weight.

**THIS REPORT IS NEITHER A GUARANTEE, VALUATION, NOR APPRAISAL OF THE GEMSTONE DESCRIBED HEREIN. PLEASE REVIEW THE LIMITATIONS AND RESTRICTIONS SET FORTH ONLINE. FOR A COMPLETE LIST OF LIMITATIONS AND DISCLAIMERS, PLEASE GO TO [WWW.IGI.ORG](http://WWW.IGI.ORG) OR CALL 1-888-BUY-IGI.**

**LASERSCRIBE<sup>SM</sup>**

© IGI 2020, International Gemological Institute

FD - 10 20

THIS DOCUMENT WAS PRODUCED WITH THE FOLLOWING SECURITY MEASURES: SPECIAL DOCUMENT PAPER, INK SCREENS, WATERMARK BACKGROUND DESIGNS, HOLOGRAM AND OTHER SECURITY FEATURES NOT LISTED AND DO EXCEED DOCUMENT SECURITY INDUSTRY GUIDELINES.

01/25/2021

IGI Report Number **LG459196045**Shape and Cutting Style **EMERALD CUT**

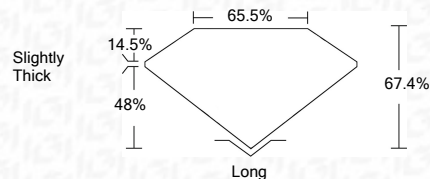
|              |                       |
|--------------|-----------------------|
| Measurements | 7.08 x 4.75 x 3.20 mm |
|--------------|-----------------------|

## GRADING RESULTS

Carat Weight **1.09 CARAT**

Color Grade D

Clarity Grade VS 2



### ADDITIONAL GRADING INFORMATION

Polish **EXCELLENT**

Symmetry **VERY GOOD**

Fluorescence **NONE**Inscription(s) **LABGROWN IGI LG459196045**

Comments: As Grown - No indication of post-growth treatment.

This Laboratory Grown Diamond was created by High Pressure High Temperature (HPHT) growth process.  
Type II



IGI

|  |                           |                         |
|--|---------------------------|-------------------------|
| 01/25/2021   | IGI Report No. LG45918045 | 1.08 CARAT              |
| HEMALD CUT   | 7.08 x 4.75 x 3.20 mm     | D                       |
| Carat Weight   | Color Grade               | VS 2                    |
| Clarity Grade  | Depth                     | 67.4%                   |
| Table  | Girdle                    | 66.5%                   |
| Symmetry   | Culet                     | Slightly Thick          |
| Fluorescence   | Polish                    | Long                    |
| Inscription(s)   |                           | EXCELLENT               |
|  |                           | VERY GOOD               |
|  |                           | NONE                    |
| Comments:  |                           | LABGROWN IGI LG45918045 |
| As Grown - No indication of post-growth treatment.   |                           |                         |
| This Laboratory Grown Diamond was created by High Pressure High Temperature (HPHT) growth process. |                           |                         |
| Type I   |                           |                         |