



|                                |   |
|--------------------------------|---|
| 03/18/2021                     |   |
| IGI Report Number              | LG467124298                                       |
| Shape and Cutting Style        | CUT CORNERED<br>RECTANGULAR MODIFIED<br>BRILLIANT |
| Measurements                   | 9.42 x 7.13 x 4.71 mm                             |
| GRADING RESULTS                |   |
| Carat Weight                   | 3.00 CARATS                                       |
| Color Grade                    | G   |
| Clarity Grade                  | VS 1  |
| ADDITIONAL GRADING INFORMATION |   |
| Polish                         | EXCELLENT   |
| Symmetry                       | EXCELLENT   |
| Fluorescence                   | NONE  |
| Inscription(s)                 | LABGROWN IGI LG467124298                          |



LG467124298

Thick

9%

70.5%

52.5%

66.1%

Pointed

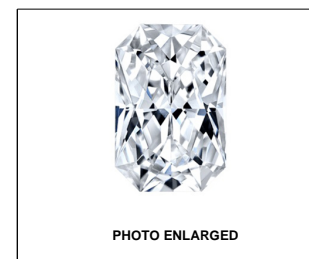
Red symbols indicate internal characteristics.  
Green symbols indicate external characteristics.

|                             |                              |  |                             |  |                        |  |                   |  |           |  |
|-----------------------------|------------------------------|--|-----------------------------|--|------------------------|--|-------------------|--|-----------|--|
| COLOR GRADING SCALE         | CL                           |  | NC                          |  | FT                     |  | VLT               |  | LT        |  |
|                             | COLORLESS D-F                |  | NEAR COLORLESS G-J          |  | FAINT K-M              |  | VERY LIGHT N-R    |  | LIGHT S-Z |  |
| CLARITY (10x) GRADING SCALE | FL IF                        |  | VVS                         |  | VS                     |  | SI                |  | I         |  |
|                             | FLAWLESS INTERNALLY FLAWLESS |  | VERY VERY SLIGHTLY INCLUDED |  | VERY SLIGHTLY INCLUDED |  | SLIGHTLY INCLUDED |  | INCLUDED  |  |

The laboratory grown diamond described in this Report (Report) has been graded, tested, analyzed, examined and/or inscribed by International Gemological Institute (I.G.I.). A laboratory grown diamond is one that has essentially the same chemical, physical and optical properties as a mined diamond, with the exception of being grown by man-made processes. I.G.I. does not certify or grade natural diamonds. I.G.I. does not currently affiliate to I.G.I. including, without limitation, 10X magnification, corrected, triple loupe, binocular microscope, master color comparison stones, non-contact optical spectrometer, ultraviolet light, ultraviolet fluorescence, ultraviolet fluorescence instruments and/or processes as deemed appropriate by I.G.I. This Report includes advanced security features. A duly accredited gemologist or jeweler can advise you with respect to the importance of and interrelationship between cut, color, clarity and carat weight.

**THIS REPORT IS NEITHER A GUARANTEE, VALUATION, NOR APPRAISAL OF THE GEMSTONE DESCRIBED HEREIN. PLEASE REVIEW THE LIMITATIONS AND RESTRICTIONS SET FORTH ONLINE. FOR ADDITIONAL INFORMATION, VISIT [WWW.IGI.COM](http://WWW.IGI.COM). I.G.I. MAKES NO WARRANTIES, REPRESENTATIONS, OR DISCLOSURES. PLEASE GO TO [WWW.IGI.COM](http://WWW.IGI.COM) FOR A FULLER DISCLOSURE.**

© INTERNATIONAL GEMOLOGICAL INSTITUTE, INC.



LABGROWN | G | LG467124298

LASERSCRIBE<sup>SM</sup>

FD - 10 20

THIS DOCUMENT WAS PRODUCED WITH THE FOLLOWING SECURITY MEASURES: SPECIAL DOCUMENT PAPER, INK SCREENS, WATERMARK, BACKGROUND DESIGNS, HOLOGRAM AND OTHER SECURITY FEATURES NOT LISTED AND DO EXCEED DOCUMENT SECURITY INDUSTRY GUIDELINES

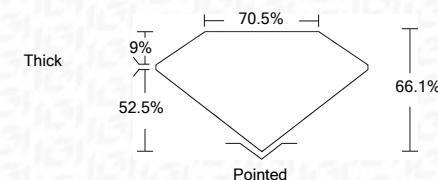
Clarity Grade

**CUT CORNERED  
RECTANGULAR MODIFIED  
BRILLIANT**

9.42 x 7.13 x 4.71 mm

**G**

**VS 1**



LABGROWN IGI LG467124298

Comments: This Laboratory Grown Diamond was created by Chemical Vapor Deposition (CVD) growth process and may include post-growth treatment.  
Type IIa



|            |                           |  |             |              |              |   |
|------------|---------------------------|--|-------------|--------------|--------------|---|
| 03/18/2021 | IGI Report No. LG46712428 | QUT CORNERED RECT. MODIFIED<br>BRILLIANT | 3.00 CARATS | VS 1         | Polished     | <p><b>Comments:</b></p> <p>This Laboratory Grown Diamond was created by Chemical Vapor Deposition (CVD) growth process and may include post-growth treatment.</p> |
|            | Carat Weight              | 4.42 x 7.13 x 4.71 mm                    | 66.1%       | Excellent    | Excellent    |   |
|            | Color Grade               |  | 70.5%       | None         | None         |   |
|            | Clarity Grade             |  | Thick       | LARGROWN IGI | LARGROWN IGI |   |
|            | Table                     |  |             | LG46712428   | LG46712428   |   |

**Comments:** This Laboratory Grown Diamond was created by Chemical Vapor Deposition (CVD) growth process and may include post-growth treatment.

**www.igi.org**