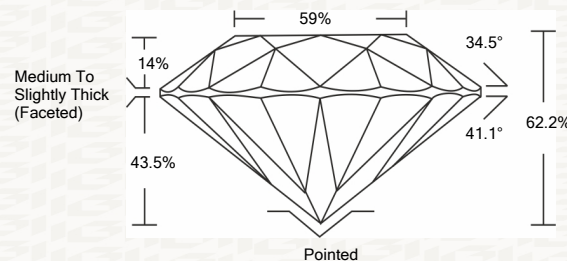




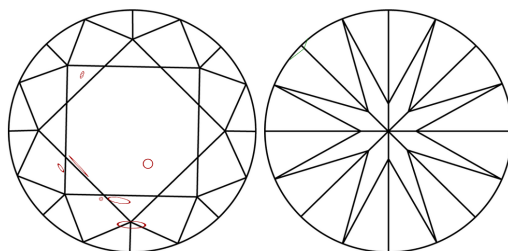
IGI GEMOLOGICAL REPORT

ADDITIONAL INFORMATION

PROPORTIONS



CLARITY CHARACTERISTICS



KEY TO SYMBOLS

Red symbols indicate internal characteristics. Green symbols indicate external characteristics.

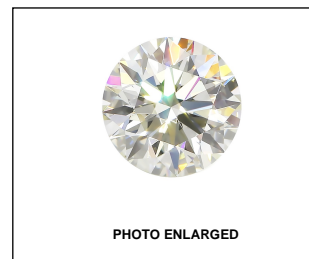
This Report is subject to the terms and conditions

© IGI 2000, edition 2019 all rights reserved.

GRADING SCALES

Table with 2 rows and 5 columns: COLOR GRADING SCALE (CL, NC, FT, VLT, LT) and CLARITY (10x) GRADING SCALE (FL, IF, VVS, VS, SI, I).

The laboratory grown diamond described in this Report (Report) has been graded, tested, analyzed, examined and/or inscribed by International Gemological Institute (I.G.I.).

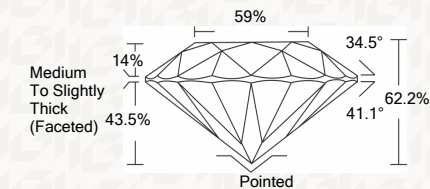


LASERSCRIBE SM



IGI LABORATORY GROWN DIAMOND GRADING REPORT

12/15/2020 IGI Report Number LG451058497 Shape and Cutting Style ROUND BRILLIANT Measurements 7.99 - 8.05 X 4.99 MM GRADING RESULTS Carat Weight 2.00 CARATS Color Grade E Clarity Grade SI 2 Cut Grade EXCELLENT



ADDITIONAL GRADING INFORMATION

Polish EXCELLENT Symmetry EXCELLENT Fluorescence NONE Inscription(s) LABGROWN IGI LG451058497

Comments: This Laboratory grown diamond was created by high pressure high temperature process (HPHT).



IGI



12/15/2020 IGI Report No. LG451058497 ROUND BRILLIANT 7.99 - 8.05 X 4.99 MM Carat Weight 2.00 CARATS Color Grade E Clarity Grade SI 2 Cut Grade EXCELLENT Depth 62.2% Table 59% Girdle Medium To Slightly Thick (Faceted) Polished EXCELLENT Culet NONE Symmetry EXCELLENT Fluorescence NONE Inscription(s) LABGROWN IGI LG451058497 Comments: This Laboratory grown diamond was created by high pressure high temperature process (HPHT).