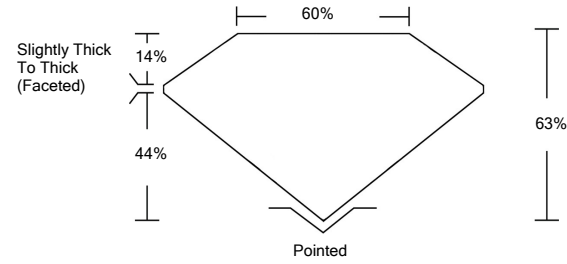




LG464118416

LABORATORY GROWN DIAMOND REPORT

PROPORTIONS



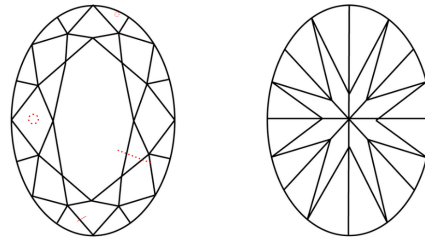
GRADING SCALES

Table with 5 columns for Color (CL, NC, FT, VLT, LT) and Clarity (FL, IF, VVS, VS, SI, I) grading scales.

The laboratory grown diamond described in this Report (Report) has been graded, tested, analyzed, examined and/or inscribed by International Gemological Institute (IGI). A laboratory grown diamond is one that has essentially the same chemical, physical and optical properties as a mined diamond...

© INTERNATIONAL GEMOLOGICAL INSTITUTE, INC.

CLARITY CHARACTERISTICS



KEY TO SYMBOLS

Red symbols indicate internal characteristics. Green symbols indicate external characteristics.

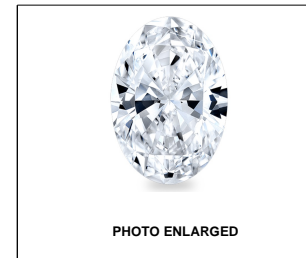


PHOTO ENLARGED



LASERSCRIBE<sup>SM</sup>

03/03/2021

IGI Report Number LG464118416

Shape and Cutting Style OVAL BRILLIANT

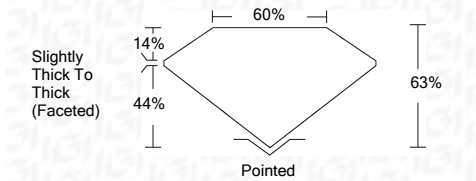
Measurements 11.24 x 8.11 x 5.11 mm

GRADING RESULTS

Carat Weight 3.00 CARATS

Color Grade G

Clarity Grade VS 2



ADDITIONAL GRADING INFORMATION

Polish EXCELLENT

Symmetry EXCELLENT

Fluorescence NONE

Inscription(s) LABGROWN IGI LG464118416

Comments: This Laboratory Grown Diamond was created by Chemical Vapor Deposition (CVD) growth process and may include post-growth treatment. Type IIa



IGI

Summary table of diamond characteristics: IGI Report No. LG464118416, OVAL BRILLIANT, 11.24 x 8.11 x 5.11 mm, 3.00 CARATS, G, VS 2, 63% Depth, 60% Table, Slightly Thick To Thick (Faceted) Girdle, Pointed Culet, EXCELLENT Polish, EXCELLENT Symmetry, NONE Fluorescence, LABGROWN IGI LG464118416 Inscription(s).

This Laboratory Grown Diamond was created by Chemical Vapor Deposition (CVD) growth process and may include post-growth treatment. Type IIa

