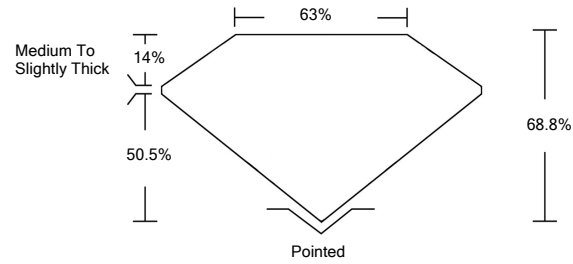




LG457086831

LABORATORY GROWN DIAMOND REPORT

PROPORTIONS

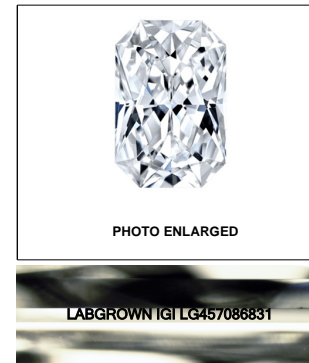
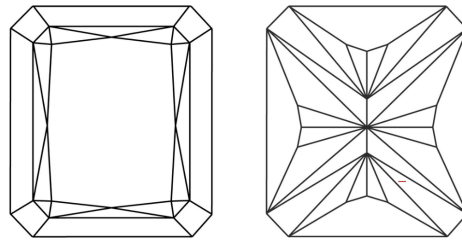


GRADING SCALES

Table with 5 columns for Color Grading Scale (CL, NC, FT, VLT, LT) and Clarity (10x) Grading Scale (FL, IF, VVS, VS, SI, I). Includes sub-labels like 'COLORLESS D-F', 'NEAR COLORLESS G-J', etc.

The laboratory grown diamond described in this Report (Report) has been graded, tested, analyzed, examined and/or inscribed by International Gemological Institute (IGI). A laboratory grown diamond is one that has essentially the same chemical, physical and optical properties as a mined diamond...

CLARITY CHARACTERISTICS



LASERSCRIBESM

KEY TO SYMBOLS

Red symbols indicate internal characteristics. Green symbols indicate external characteristics.

01/19/2021 IGI Report Number LG457086831

Shape and Cutting Style CUT CORNERED RECTANGULAR MODIFIED BRILLIANT

Measurements 7.75 x 5.73 x 3.94 mm

GRADING RESULTS

Carat Weight 1.50 CARAT Color Grade I Clarity Grade VS 1

ADDITIONAL GRADING INFORMATION

Polish EXCELLENT Symmetry EXCELLENT Fluorescence NONE Inscription(s) LABGROWN IGI LG457086831

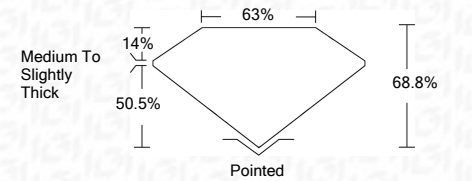
Comments: This Laboratory Grown Diamond was created by Chemical Vapor Deposition (CVD) growth process and may include post-growth treatment. Type IIa

01/19/2021 IGI Report Number LG457086831 Shape and Cutting Style CUT CORNERED RECTANGULAR MODIFIED BRILLIANT

Measurements 7.75 x 5.73 x 3.94 mm

GRADING RESULTS

Carat Weight 1.50 CARAT Color Grade I Clarity Grade VS 1



ADDITIONAL GRADING INFORMATION

Polish EXCELLENT Symmetry EXCELLENT Fluorescence NONE Inscription(s) LABGROWN IGI LG457086831

Comments: This Laboratory Grown Diamond was created by Chemical Vapor Deposition (CVD) growth process and may include post-growth treatment. Type IIa



IGI

01/19/2021 IGI Report No. LG457086831 CUT CORNERED RECT. MODIFIED BRILLIANT 7.75 x 5.73 x 3.94 mm 1.50 CARAT I VS 1 68.8% 63% Medium To Slightly Thick Pointed EXCELLENT EXCELLENT NONE LABGROWN IGI LG457086831

This Laboratory Grown Diamond was created by Chemical Vapor Deposition (CVD) growth process and may include post-growth treatment. Type IIa