



IGI GEMOLOGICAL REPORT

IGI LABORATORY GROWN DIAMOND GRADING REPORT

09/16/2020

IGI Report Number LG440013002

Shape and Cutting Style OVAL BRILLIANT

Measurements 8.21 X 5.77 X 3.59 MM

GRADING RESULTS

Carat Weight 1.08 CARAT

Color Grade D

Clarity Grade VS 1

ADDITIONAL GRADING INFORMATION

Polish EXCELLENT

Symmetry VERY GOOD

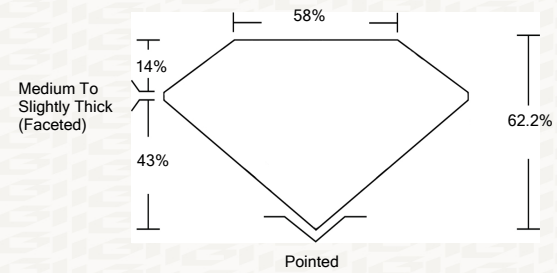
Fluorescence NONE

Inscription(s) LABGROWN IGI LG440013002

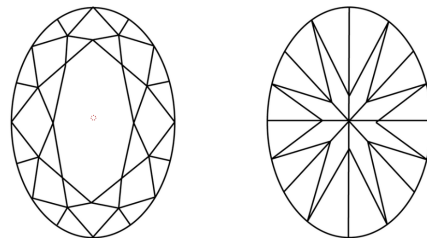
Comments: This Laboratory grown diamond was created by chemical vapor deposition process (CVD) Type IIa

ADDITIONAL INFORMATION

PROPORTIONS



CLARITY CHARACTERISTICS



KEY TO SYMBOLS

Red symbols indicate internal characteristics. Green symbols indicate external characteristics.

This Report is subject to the terms and conditions

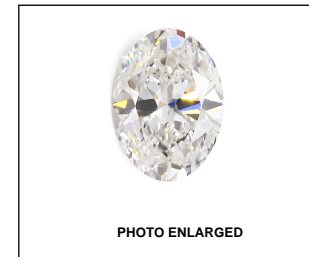
© IGI 2000, edition 2019 all rights reserved.

GRADING SCALES

Table showing grading scales for Color (CL, NC, FT, VLT, LT) and Clarity (FL, IF, VVS, VS, SI, I).

The laboratory grown diamond described in this Report (Report) has been graded, tested, analyzed, examined and/or inscribed by International Gemological Institute (IGI). A laboratory grown diamond is one that has essentially the same chemical, physical and optical properties as a mined diamond, with the exception of being grown by man (a manufactured product).

© INTERNATIONAL GEMOLOGICAL INSTITUTE, INC.



LABGROWN IGI LG440013002

LASERSCRIBE SM



THE DOCUMENT WAS PRODUCED THE FOLLOING SECURITY MEASURES: SPECIAL DOCUMENT PAPER, INK, SCREENS, WATERMARK, BACKGROUND DESIGNS HOLOGRAM AND OTHER SECURITY FEATURES NOT LISTED AND DO EXCEED DOCUMENT SECURITY INDUSTRY DUDLINES

IGI LABORATORY GROWN DIAMOND GRADING REPORT

09/16/2020

IGI Report Number LG440013002

Shape and Cutting Style OVAL BRILLIANT

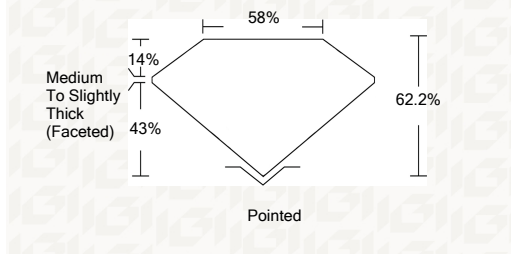
Measurements 8.21 X 5.77 X 3.59 MM

GRADING RESULTS

Carat Weight 1.08 CARAT

Color Grade D

Clarity Grade VS 1



ADDITIONAL GRADING INFORMATION

Polish EXCELLENT

Symmetry VERY GOOD

Fluorescence NONE

Inscription(s) LABGROWN IGI LG440013002

Comments: This Laboratory grown diamond was created by chemical vapor deposition process (CVD) Type IIa



IGI



Summary of report details including date, report number, measurements, grading results, and additional information.