



ELECTRONIC COPY

LG407948777

IGI GEMOLOGICAL REPORT

IGI LABORATORY GROWN DIAMOND GRADING REPORT

05/20/2020 IGI Report Number LG407948777

Shape and Cutting Style OVAL BRILLIANT

Measurements 9.32 X 7.03 X 4.61 MM

GRADING RESULTS

Carat Weight 2.00 CARATS

Color Grade J

Clarity Grade SI 1

ADDITIONAL GRADING INFORMATION

Polish EXCELLENT

Symmetry VERY GOOD

Fluorescence NONE

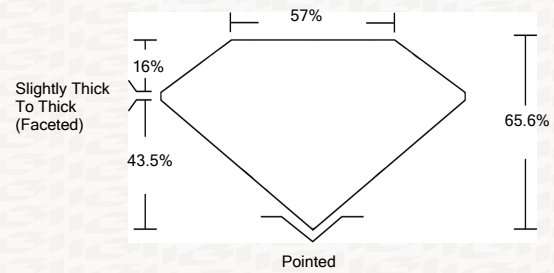
Inscription(s) LABGROWN IGI LG407948777

Comments: This Laboratory grown diamond was created by chemical vapor deposition process (CVD) Type IIa

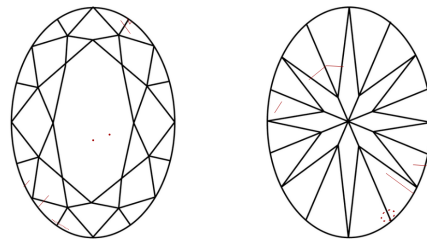


ADDITIONAL INFORMATION

PROPORTIONS



CLARITY CHARACTERISTICS



KEY TO SYMBOLS

Red symbols indicate internal characteristics. Green symbols indicate external characteristics.

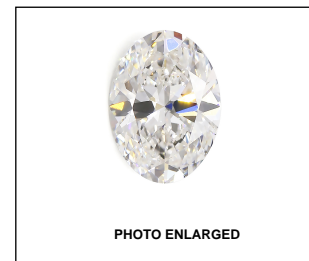
This Report is subject to the terms and conditions

© IGI 2000, edition 2019 all rights reserved.

GRADING SCALES

Table with 5 columns for Color Grading Scale (CL, NC, FT, VLT, LT) and 5 columns for Clarity (10x) Grading Scale (FL, IF, VVS, VS, SI, I). Includes sub-labels like 'COLORLESS D-F', 'NEAR COLORLESS G-J', etc.

The laboratory grown diamond described in this Report ("Report") has been graded, tested, analyzed, examined and/or inscribed by International Gemological Institute (IGI). A laboratory grown diamond is one that has essentially the same chemical, physical and optical properties as a mined diamond, with the exception of being grown by man (a manufactured product). IGI employs and utilizes those techniques and equipment currently available to IGI, including, without limitation, 10X magnification, corrected triplet loupe, binocular microscope, master color comparison stones, non-contact-optical measuring device, Diamond Sure™, Diamond View™, Spectrophotometer and such other instruments and/or processes as deemed appropriate by IGI. This Report includes advanced security features. A duly accredited gemologist or jeweler can advise you with respect to the importance of and interrelationship between cut, color, clarity and carat weight. THIS REPORT IS NEITHER A GUARANTEE, VALUATION, NOR APPRAISAL OF THE GEMSTONE DESCRIBED HEREIN. PLEASE REVIEW THE LIMITATIONS AND RESTRICTIONS SET FORTH ONLINE. FOR ADDITIONAL INFORMATION, IMPORTANT LIMITATIONS AND DISCLAIMERS, PLEASE GO TO WWW.IGI.ORG OR CALL 1-888-BUY-IGI. © INTERNATIONAL GEMOLOGICAL INSTITUTE, INC.



LABGROWN IGI LG407948777

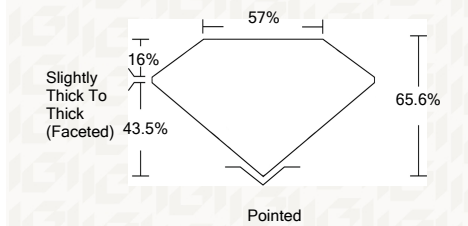
LASERSCRIBE SM



IGI LABORATORY GROWN DIAMOND GRADING REPORT

05/20/2020 IGI Report Number LG407948777 Shape and Cutting Style OVAL BRILLIANT Measurements 9.32 X 7.03 X 4.61 MM

GRADING RESULTS Carat Weight 2.00 CARATS Color Grade J Clarity Grade SI 1



ADDITIONAL GRADING INFORMATION

Polish EXCELLENT Symmetry VERY GOOD Fluorescence NONE Inscription(s) LABGROWN IGI LG407948777

Comments: This Laboratory grown diamond was created by chemical vapor deposition process (CVD) Type IIa



IGI

05/20/2020 IGI Report No LG407948777 OVAL BRILLIANT 9.32 X 7.03 X 4.61 MM Carat Weight 2.00 CARATS Color Grade J Clarity Grade SI 1 Depth 65.6% Table 57% Girdle Slightly Thick To Thick (Faceted) Culet Polished Polish EXCELLENT Symmetry VERY GOOD Fluorescence NONE Inscription(s) LABGROWN IGI LG407948777 Comments: This Laboratory grown diamond was created by chemical vapor deposition process (CVD) Type IIa