



**INTERNATIONAL
GEMOLOGICAL
INSTITUTE**

ELECTRONIC COPY

LG407945422

LABORATORY GROWN DIAMOND REPORT

**EDUCATIONAL AND GRADING
FOR THE IDENTIFICATION AND GRADING
OF DIAMONDS AND COLORED STONES**

IGI GEMOLOGICAL REPORT

IGI LABORATORY GROWN DIAMOND GRADING REPORT

02/24/2020

IGI Report Number **LG407945422**

Shape and Cutting Style **OVAL BRILLIANT**

Measurements **8.04 X 5.67 X 3.56 MM**

GRADING RESULTS

Carat Weight **1.03 CARAT**

Color Grade **I**

Clarity Grade **SI 1**

ADDITIONAL GRADING INFORMATION

Polish **EXCELLENT**

Symmetry **VERY GOOD**

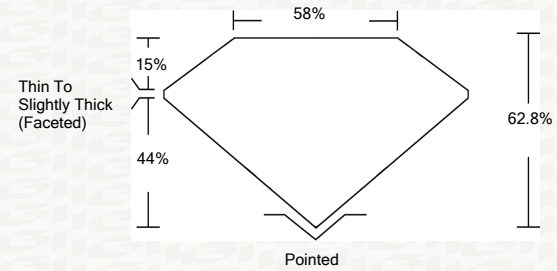
Fluorescence **NONE**

Inscription(s) **LABGROWN IGI LG407945422**

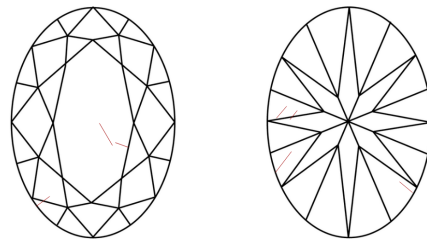
Comments: This Laboratory grown diamond was created by chemical vapor deposition process (CVD) Type IIa

ADDITIONAL INFORMATION

PROPORTIONS



CLARITY CHARACTERISTICS



KEY TO SYMBOLS

Red symbols indicate internal characteristics.
Green symbols indicate external characteristics.

This Report is subject to the terms and conditions

© IGI 2000, edition 2019 all rights reserved.

GRADING SCALES

COLOR GRADING SCALE	CL	NC	FT	VL	LT	
	COLORLESS D-F	NEAR COLORLESS G-J	FAINT K-M	VERY LIGHT N-R	LIGHT S-Z	
CLARITY (10X) GRADING SCALE	FL	IF	VVS	VS	SI	I
	FLAWLESS INTERNALLY FLAWLESS	VERY VERY SLIGHTLY INCLUDED	VERY SLIGHTLY INCLUDED	SLIGHTLY INCLUDED	INCLUDED	

The laboratory grown diamond described in this Report (Report) has been graded, tested, analyzed, examined and/or inscribed by International Gemological Institute (IGI). A laboratory grown diamond is one that has essentially the same chemical, physical and optical properties as a mined diamond, with the exception of being grown by man (a manufactured product). IGI employs and utilizes those techniques and equipment currently available to IGI, including, without limitation, 10X magnification, corrected triplet loupe, binocular microscope, master color comparison stones, non-contact-optical measuring device, Diamond Sure™, Diamond View™, Spectrophotometer and such other instruments and/or processes as deemed appropriate by IGI. This Report includes advanced security features. A duly accredited gemologist or jeweler can advise you with respect to the importance of and interrelationship between cut, color, clarity and carat weight.

THIS REPORT IS NEITHER A GUARANTEE, VALUATION, NOR APPRAISAL OF THE GEMSTONE DESCRIBED HEREIN. PLEASE REVIEW THE LIMITATIONS AND RESTRICTIONS SET FORTH ONLINE. FOR ADDITIONAL INFORMATION, IMPORTANT LIMITATIONS AND DISCLAIMERS, PLEASE GO TO WWW.IGI.ORG OR CALL 1-888-BUY-IGI.

© INTERNATIONAL GEMOLOGICAL INSTITUTE, INC.

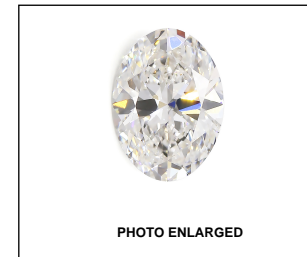


PHOTO ENLARGED



LASERSCRIBE SM



THIS DOCUMENT WAS PRODUCED USING THE FOLLOWING SECURITY MEASURES: SPECIAL DOCUMENT PAPER, INK SCREENING WATERMARK, BACKGROUND DESIGNS HOLOGRAM AND OTHER SECURITY FEATURES NOT LISTED AND DO EXCEED DOCUMENT SECURITY INDUSTRY DUBLINES

IGI LABORATORY GROWN DIAMOND GRADING REPORT

02/24/2020

IGI Report Number **LG407945422**

Shape and Cutting Style **OVAL BRILLIANT**

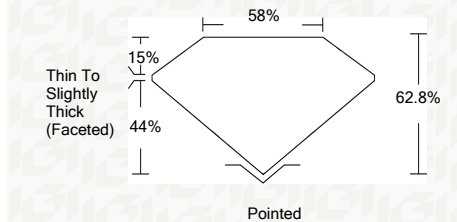
Measurements **8.04 X 5.67 X 3.56 MM**

GRADING RESULTS

Carat Weight **1.03 CARAT**

Color Grade **I**

Clarity Grade **SI 1**



ADDITIONAL GRADING INFORMATION

Polish **EXCELLENT**

Symmetry **VERY GOOD**

Fluorescence **NONE**

Inscription(s) **LABGROWN IGI LG407945422**

Comments: This Laboratory grown diamond was created by chemical vapor deposition process (CVD) Type IIa



IGI



02/24/2020	IGI Report No LG407945422	OVAL BRILLIANT	8.04 X 5.67 X 3.56 MM	Carat Weight 1.03 CARAT	Color Grade I	Clarity Grade SI 1	Depth 62.8%	Table 58%	Thin To Slightly Thick (Faceted)	Pointed	Polish EXCELLENT	Symmetry VERY GOOD	Fluorescence NONE	Inscription(s) LABGROWN IGI LG407945422	Comments: This laboratory grown diamond was created by chemical vapor deposition process (CVD) Type IIa
------------	---------------------------	----------------	-----------------------	-------------------------	---------------	--------------------	-------------	-----------	----------------------------------	---------	------------------	--------------------	-------------------	---	---