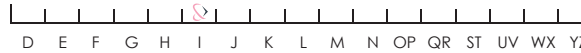




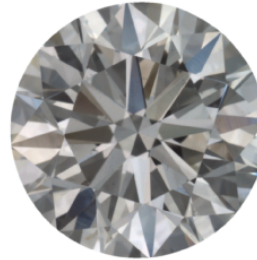
COLOR



* Illustration and color rendering
Color grading scale



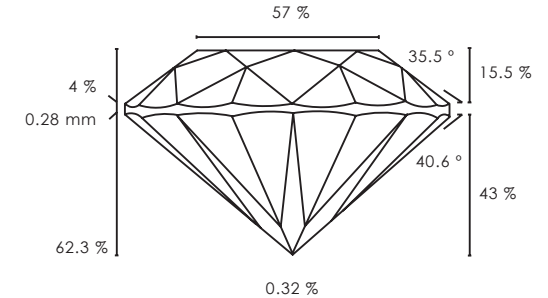
CLARITY



* Actual face up image, Not to scale
Clarity grading scale



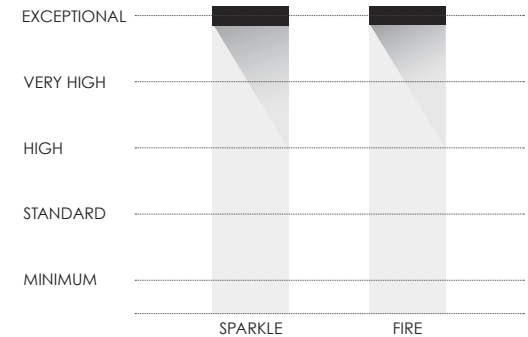
CUT & PROPORTIONS



* Actual proportions diagram
Cut grading scale



LIGHT PERFORMANCE RESULTS



Date 10-07-2021
 Shape Round
 Report ID R&F BXJ09H9TFHZ
 Carat 1.31
 Color I
 Clarity SI1
 Cut EX
 Polish VG
 Symmetry EX
 Fluorescence Faint
 Measurements 6.96 - 6.97 X 4.34 mm
 Total Depth 62.3 %
 Table 57 %
 Crown 15.5 % - 35.5 °
 Star Length 50 %
 Girdle 4 % faceted
 Pavilion 43 % - 40.6 °
 Lower Girdle 80 %
 Table Inscription R&F BXJ09H9TFHZ
 *For additional security this diamond has an R&F table inscription.

The security features in this document include, but are not limited to, our hologram, watermarked paper, microprint lines, barcode, and Quick Response (QR) code, that as a composite, exceed document security industry standards.

Our grading is exclusive to earth-mined natural diamonds that have not gone through any treatment process.

View, verify and share your Rare & Forever diamond report online by scanning the QR code



RARE & FOREVER SELECTION PROCESS

The first step in our Rare Selection Process is to prescreen diamonds to reject all those with BGM (Brown, Green, Milky hues within the white diamond). These hues not only devalue the diamond but are difficult to identify when researching diamonds online. Take note that these hues are not disclosed on 99% of the prominent grading reports and laboratories. Rare & Forever is the 1%, setting the standard for maximum brilliance, and bringing transparency and trust to individuals buying diamonds. Next, we utilize unrivaled, A.I. (Artificial Intelligence) diamond grading technology. Traditional human grading varies person to person and lab to lab. Rare & Forever utilizes advanced A.I. technology to eliminate inconsistencies and individual bias to ensure accurate diamond grading. Finally, we screen for brilliance and validate our findings with Light Performance to confirm your diamond is the most brilliant and beautiful diamond available today. Additionally, this Diamond Grading Report details cut, color, clarity and carat weight, plus, other characteristics to verify your purchase. This diamond offers an advanced level of security to ensure your diamond is yours: an R&F laser inscription on the table that matches this diamonds certificate number.

TERMS & CONDITIONS

Through advanced A.I. technology, we are able to supply you with a natural diamond that has gone through rigorous measures to be sourced to comply with the World Diamond Council's Kimberly Process Certification standards. The Kimberly Process is upheld by the United Nations and supported by national governments worldwide and the international diamond industry, to ensure that all diamonds are ethically sourced and conflict free, by the associated countries. The results of this grading report refers only to the diamond identified and were reported using technology and information available to Rare & Forever at the time of inspection. Rare and Forever is not responsible for other entities and persons, as we have given the most accurate description to the best of our ability. This report is not intended to be a guarantee or appraisal of the diamond referred to in this document.

RARE & FOREVER™

www.rareandforever.com



| | |
|---------------------|------------------------------|
| Date | 10-07-2021 |
| Shape | Round |
| Report ID | R&F BXJ09H9TFHZ |
| Carat | 1.31 |
| Color | I |
| Clarity | S11 |
| Cut | EX |
| Polish | VG |
| Symmetry | EX |
| Fluorescence | Faint |
| Measurements | 6.96 - 6.97 X 4.34 mm |
| Total Depth | 62.3 % |
| Table | 57 % |
| Crown | 15.5 % - 35.5 ° |
| Star Length | 50 % |
| Girdle | 4 % faceted |
| Pavilion | 43 % - 40.6 ° |
| Lower Girdle | 80 % |
| Table Inscription | R&F BXJ09H9TFHZ |

*For additional security this diamond has an R&F table inscription.

DIAMOND GRADING REPORT

RARE & FOREVER™



RARE & FOREVER
50 West 47th Street
Suite 1907
New York, NY 10036

POWERED BY SARINE

