



IGI GEMOLOGICAL REPORT

IGI LABORATORY GROWN DIAMOND GRADING REPORT

01/29/2020

IGI Report Number LG407966164

Shape and Cutting Style ROUND BRILLIANT

Measurements 9.53 - 9.57 X 5.93 MM

GRADING RESULTS

Carat Weight 3.32 CARATS

Color Grade H

Clarity Grade VS 2

Cut Grade IDEAL

ADDITIONAL GRADING INFORMATION

Polish EXCELLENT

Symmetry EXCELLENT

Fluorescence NONE

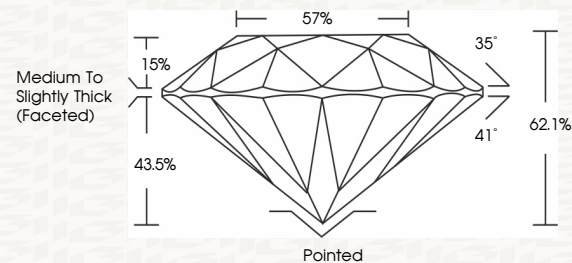
Inscription(s) LABGROWN IGI LG407966164

Comments: This Chemical Vapor Deposition (CVD) laboratory grown diamond is classified as Type IIa

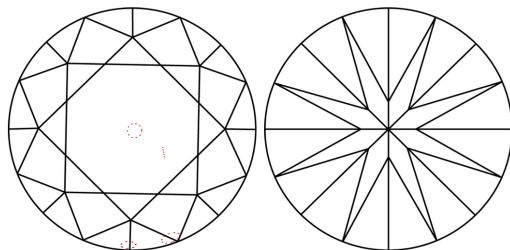


ADDITIONAL INFORMATION

PROPORTIONS



CLARITY CHARACTERISTICS



KEY TO SYMBOLS

Red symbols indicate internal characteristics. Green symbols indicate external characteristics.

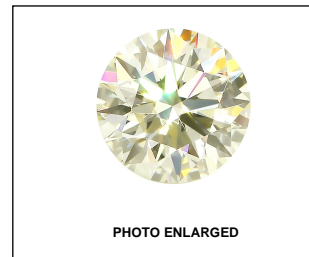
This Report is subject to the terms and conditions

© IGI 2000, edition 2019 all rights reserved.

GRADING SCALES

Table with 2 rows and 5 columns showing grading scales for Color (CL) and Clarity (10x) (CLARITY).

The laboratory grown diamond described in this Report (Report) has been graded, tested, analyzed, examined and/or inscribed by International Gemological Institute (I.G.I.).



IGI LABORATORY GROWN DIAMOND GRADING REPORT

01/29/2020

IGI Report Number LG407966164

Shape and Cutting Style ROUND BRILLIANT

Measurements 9.53 - 9.57 X 5.93 MM

GRADING RESULTS

Carat Weight 3.32 CARATS

Color Grade H

Clarity Grade VS 2

Cut Grade IDEAL

ADDITIONAL GRADING INFORMATION

Polish EXCELLENT

Symmetry EXCELLENT

Fluorescence NONE

Inscription(s) LABGROWN IGI LG407966164

Comments: This Chemical Vapor Deposition (CVD) laboratory grown diamond is classified as Type IIa



IGI

Summary of report details including report number, measurements, grading results, and additional information.