



ELECTRONIC COPY

LABORATORY GROWN DIAMOND REPORT

September 12, 2022
IGI Report Number LG546219693
Description LABORATORY GROWN DIAMOND
Shape and Cutting Style EMERALD CUT
Measurements 7.51 X 5.56 X 3.74 MM

GRADING RESULTS

Carat Weight 1.52 CARAT
Color Grade E
Clarity Grade VS 2

ADDITIONAL GRADING INFORMATION

Polish VERY GOOD
Symmetry VERY GOOD
Fluorescence NONE

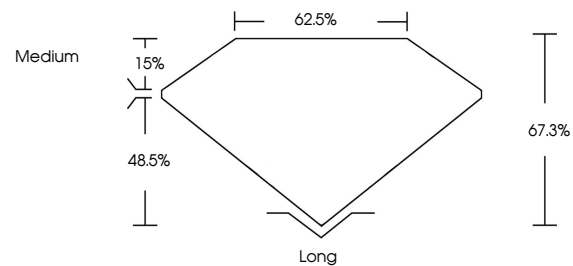
Inscription(s) LABGROWN IGI LG546219693

Comments: As Grown - No indication of post-growth treatment.

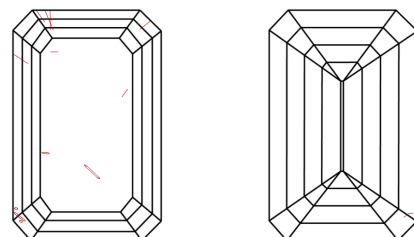
This Laboratory Grown Diamond was created by High Pressure High Temperature (HPHT) growth process. Type II

LG546219693

PROPORTIONS



CLARITY CHARACTERISTICS



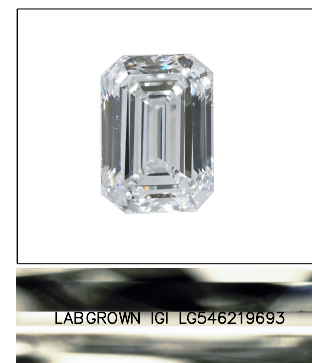
KEY TO SYMBOLS

Red symbols indicate internal characteristics.
Green symbols indicate external characteristics.

LABORATORY GROWN DIAMOND REPORT

GRADING SCALES

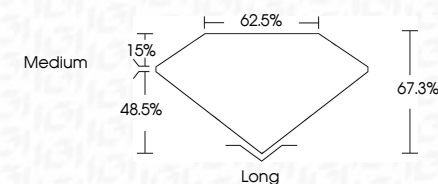
Table with 2 rows and 5 columns defining color and clarity grading scales.



LASERSCRIBE SM
Sample Image Used

LABORATORY GROWN DIAMOND REPORT

September 12, 2022
IGI Report Number LG546219693
Description LABORATORY GROWN DIAMOND
Shape and Cutting Style EMERALD CUT
Measurements 7.51 X 5.56 X 3.74 MM
GRADING RESULTS
Carat Weight 1.52 CARAT
Color Grade E
Clarity Grade VS 2



ADDITIONAL GRADING INFORMATION

Polish VERY GOOD
Symmetry VERY GOOD
Fluorescence NONE
Inscription(s) LABGROWN IGI LG546219693

Comments: As Grown - No indication of post-growth treatment.
This Laboratory Grown Diamond was created by High Pressure High Temperature (HPHT) growth process. Type II



Summary table of diamond specifications: Date, Report No, Cut, Carat Weight, Color Grade, Clarity Grade, Depth, Table, Girdle, Culet, Polish, Symmetry, Fluorescence, Inscription(s), Comments.

As Grown - No indication of post-growth treatment.
The Laboratory Grown Diamond was created by High Pressure High Temperature (HPHT) growth process. Type II