

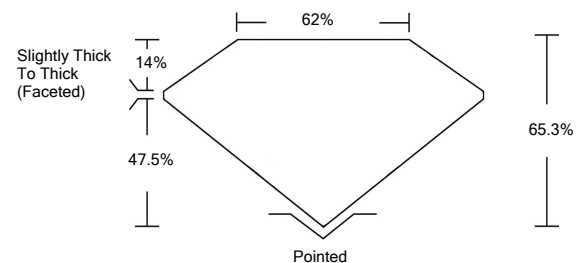


ELECTRONIC COPY

LABORATORY GROWN DIAMOND REPORT

LG532263632

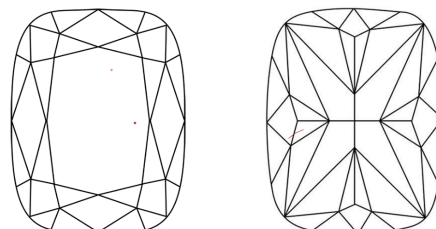
PROPORTIONS



GRADING SCALES

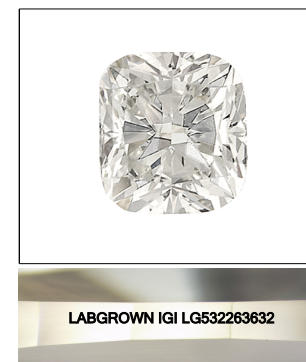
| | | | | | | |
|-----------------------------|------------------------------|-----------------------------|------------------------|-------------------|-----------|----------|
| COLOR GRADING SCALE | CL | NC | FT | VL | LT | |
| | COLORLESS D-F | NEAR COLORLESS G-J | FAINT K-M | VERY LIGHT N-R | LIGHT S-Z | |
| CLARITY (10x) GRADING SCALE | FL | IF | VVS | VS | SI | I |
| | FLAWLESS INTERNALLY FLAWLESS | VERY VERY SLIGHTLY INCLUDED | VERY SLIGHTLY INCLUDED | SLIGHTLY INCLUDED | INCLUDED | INCLUDED |

CLARITY CHARACTERISTICS



KEY TO SYMBOLS

Red symbols indicate internal characteristics.
Green symbols indicate external characteristics.



LASERSCRIBESM

Sample Image Used

June 9, 2022

IGI Report Number **LG532263632**

Description **LABORATORY GROWN DIAMOND**

Shape and Cutting Style **CUSHION BRILLIANT**

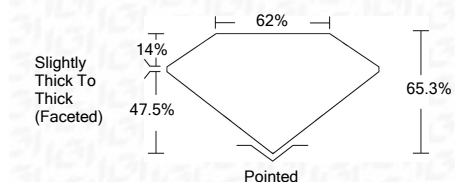
Measurements **9.47 X 7.96 X 5.20 MM**

GRADING RESULTS

Carat Weight **3.06 CARATS**

Color Grade **F**

Clarity Grade **VS 1**



ADDITIONAL GRADING INFORMATION

Polish **EXCELLENT**

Symmetry **EXCELLENT**

Fluorescence **NONE**

Inscription(s) **LABGROWN IGI LG532263632**

Comments: This Laboratory Grown Diamond was created by Chemical Vapor Deposition (CVD) growth process and may include post-growth treatment.
Type IIa

June 9, 2022

IGI Report Number **LG532263632**

Description **LABORATORY GROWN DIAMOND**

Shape and Cutting Style **CUSHION BRILLIANT**

Measurements **9.47 X 7.96 X 5.20 MM**

GRADING RESULTS

Carat Weight **3.06 CARATS**

Color Grade **F**

Clarity Grade **VS 1**

ADDITIONAL GRADING INFORMATION

Polish **EXCELLENT**

Symmetry **EXCELLENT**

Fluorescence **NONE**

Inscription(s) **LABGROWN IGI LG532263632**

Comments: This Laboratory Grown Diamond was created by Chemical Vapor Deposition (CVD) growth process and may include post-growth treatment.
Type IIa



IGI

| | | | | | | | | | | | |
|----------------------------|--------------------------|--------------------------|--------------------------|--------------------------|--------------------------|--------------------------|--------------------------|--------------------------|--------------------------|--------------------------|--------------------------|
| IGI Report No. LG532263632 | 3.06 CARATS | F | VS 1 | 65.3% | 62% | Pointed | EXCELLENT | EXCELLENT | NONE | LABGROWN IGI LG532263632 | Comments: |
| CUSHION BRILLIANT | 9.47 X 7.96 X 5.20 MM | Color Grade | Clarity Grade | Depth | Table | Girdle | Culet | Polish | Symmetry | Fluorescence | Inscription(s) |
| LABGROWN IGI LG532263632 | LABGROWN IGI LG532263632 | LABGROWN IGI LG532263632 | LABGROWN IGI LG532263632 | LABGROWN IGI LG532263632 | LABGROWN IGI LG532263632 | LABGROWN IGI LG532263632 | LABGROWN IGI LG532263632 | LABGROWN IGI LG532263632 | LABGROWN IGI LG532263632 | LABGROWN IGI LG532263632 | LABGROWN IGI LG532263632 |

This Laboratory Grown Diamond was created by Chemical Vapor Deposition (CVD) growth process and may include post-growth treatment.
Type IIa