



ELECTRONIC COPY

LABORATORY GROWN DIAMOND REPORT

October 19, 2022
IGI Report Number LG551212590
Description LABORATORY GROWN DIAMOND
Shape and Cutting Style OLD EUROPEAN CUT
Measurements 7.98 X 7.98 X 5.07 MM

GRADING RESULTS

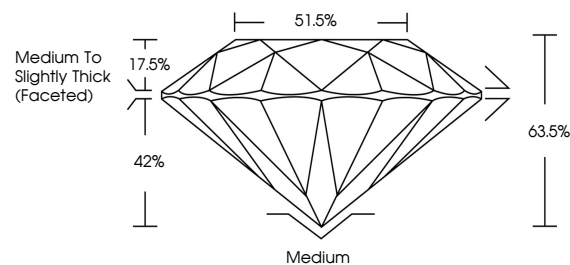
Carat Weight 2.04 CARATS
Color Grade F
Clarity Grade VVS 2

ADDITIONAL GRADING INFORMATION

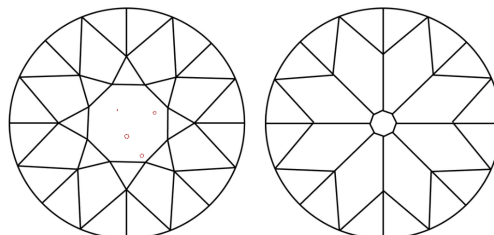
Polish EXCELLENT
Symmetry EXCELLENT
Fluorescence NONE
Inscription(s) LABGROWN IGI LG551212590
Comments: This Laboratory Grown Diamond was created by Chemical Vapor Deposition (CVD) growth process and may include post-growth treatment. Type IIa

LG551212590

PROPORTIONS



CLARITY CHARACTERISTICS

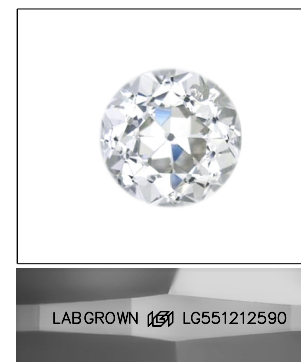


KEY TO SYMBOLS

Red symbols indicate internal characteristics.
Green symbols indicate external characteristics.

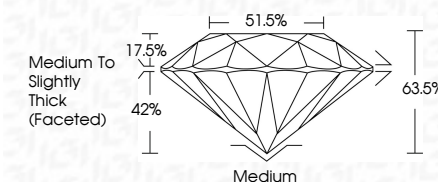
GRADING SCALES

Table showing color grading scales (CL, NC, FT, VLT, LT) and clarity (10x) grading scales (FL, IF, VVS, VS, SI, I).



LASERSCRIBE SM
Sample Image Used

October 19, 2022
IGI Report Number LG551212590
Description LABORATORY GROWN DIAMOND
Shape and Cutting Style OLD EUROPEAN CUT
Measurements 7.98 X 7.98 X 5.07 MM
GRADING RESULTS
Carat Weight 2.04 CARATS
Color Grade F
Clarity Grade VVS 2



ADDITIONAL GRADING INFORMATION

Polish EXCELLENT
Symmetry EXCELLENT
Fluorescence NONE
Inscription(s) LABGROWN IGI LG551212590
Comments: This Laboratory Grown Diamond was created by Chemical Vapor Deposition (CVD) growth process and may include post-growth treatment. Type IIa



Summary box containing report details: October 19, 2022, IGI Report No LG551212590, OLD EUROPEAN CUT, 7.98 X 7.98 X 5.07 MM, 2.04 CARATS, Color Grade F, Clarity Grade VVS 2, Depth 63.5%, Table 51.5%, Grade Medium To Slightly Thick (Faceted), Polish EXCELLENT, Symmetry EXCELLENT, Fluorescence NONE, Inscription(s) LABGROWN IGI LG551212590, Comments: This Laboratory Grown Diamond was created by Chemical Vapor Deposition (CVD) growth process and may include post-growth treatment. Type IIa