



ELECTRONIC COPY

LABORATORY GROWN DIAMOND REPORT

LG557242599

Report verification at igi.org

LABORATORY GROWN
DIAMOND REPORT

LABORATORY GROWN DIAMOND REPORT

LABORATORY GROWN DIAMOND REPORT

November 29, 2022
IGI Report Number **LG557242599**
Description **LABORATORY GROWN
DIAMOND**
Shape and Cutting Style **OLD EUROPEAN CUT**
Measurements **7.87 X 7.91 X 5.01 MM**

GRADING RESULTS

Carat Weight **2.00 CARATS**
Color Grade **F**
Clarity Grade **VS 1**

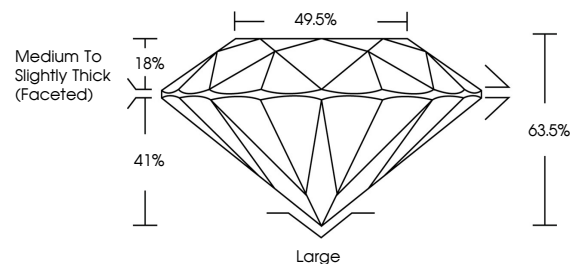
ADDITIONAL GRADING INFORMATION

Polish **EXCELLENT**
Symmetry **EXCELLENT**
Fluorescence **NONE**

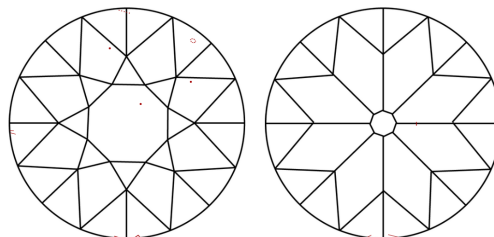
Inscription(s) **LABGROWN (LGI) LG557242599**

Comments: This Laboratory Grown Diamond was created by Chemical Vapor Deposition (CVD) growth process and may include post-growth treatment. Type IIa

PROPORTIONS



CLARITY CHARACTERISTICS



KEY TO SYMBOLS

Red symbols indicate internal characteristics.
Green symbols indicate external characteristics.

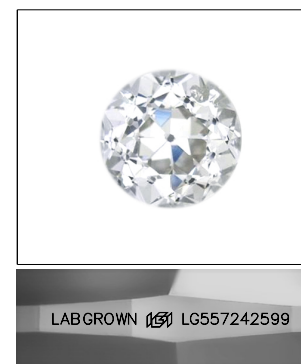
GRADING SCALES

CLARITY

IF	VVS ¹⁻²	VS ¹⁻²	SI ¹⁻²	I ¹⁻³
Internally Flawless	Very Very Slightly Included	Very Slightly Included	Slightly Included	Included

COLOR

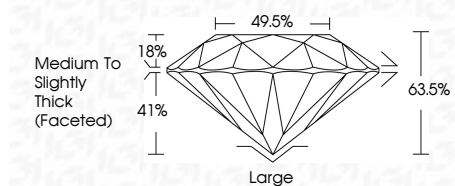
D	E	F	G	H	I	J	Faint	Very Light	Light
---	---	---	---	---	---	---	-------	------------	-------



LASERSCRIBESM

Sample Image Used

November 29, 2022
IGI Report Number **LG557242599**
Description **LABORATORY GROWN
DIAMOND**
Shape and Cutting Style **OLD EUROPEAN CUT**
Measurements **7.87 X 7.91 X 5.01 MM**
GRADING RESULTS
Carat Weight **2.00 CARATS**
Color Grade **F**
Clarity Grade **VS 1**



ADDITIONAL GRADING INFORMATION

Polish **EXCELLENT**
Symmetry **EXCELLENT**
Fluorescence **NONE**
Inscription(s) **LABGROWN (LGI) LG557242599**

Comments: This Laboratory Grown Diamond was created by Chemical Vapor Deposition (CVD) growth process and may include post-growth treatment. Type IIa



IGI

November 29, 2022
IGI Report No LG557242599
OLD EUROPEAN CUT
7.87 X 7.91 X 5.01 MM
2.00 CARATS
F
2.00 CARATS
F
VS 1
63.5%
49.5%
Medium to Slightly Thick (Faceted)
Large
EXCELLENT
EXCELLENT
NONE
LABGROWN (LGI) LG557242599

Comments: This Laboratory Grown Diamond was created by Chemical Vapor Deposition (CVD) growth process and may include post-growth treatment. Type IIa