



ELECTRONIC COPY

LG530295411

LABORATORY GROWN DIAMOND REPORT

May 25, 2022
IGI Report Number **LG530295411**
Description **LABORATORY GROWN
DIAMOND**
Shape and Cutting Style **ROUND BRILLIANT**
Measurements **10.59 - 10.65 X 6.38 MM**

GRADING RESULTS

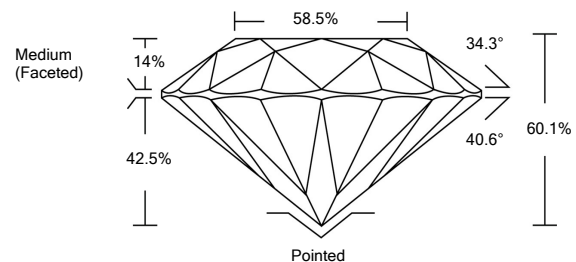
Carat Weight **4.40 CARATS**
Color Grade **F**
Clarity Grade **VS 2**
Cut Grade **IDEAL**

ADDITIONAL GRADING INFORMATION

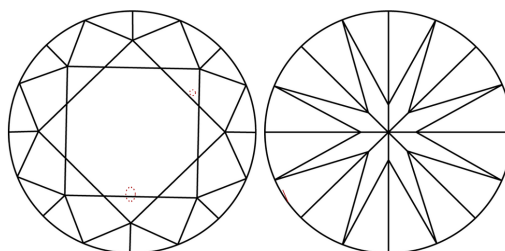
Polish **EXCELLENT**
Symmetry **EXCELLENT**
Fluorescence **NONE**
Inscription(s) **LABGROWN IGI LG530295411**

Comments: HEARTS & ARROWS
This Laboratory Grown Diamond was created by Chemical Vapor Deposition (CVD) growth process and may include post-growth treatment.
Type IIa

PROPORTIONS

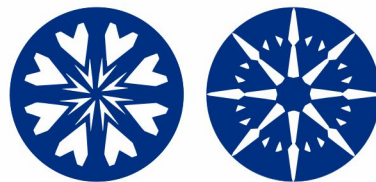


CLARITY CHARACTERISTICS



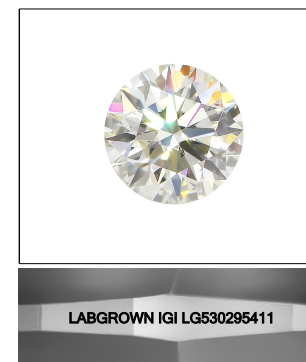
KEY TO SYMBOLS

Red symbols indicate internal characteristics.
Green symbols indicate external characteristics.



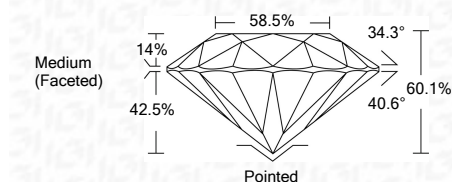
GRADING SCALES

COLOR GRADING SCALE	CL	NC	FT	VL	LT	
	COLORLESS D-F	NEAR COLORLESS G-J	FAINT K-M	VERY LIGHT N-R	LIGHT S-Z	
CLARITY (10x) GRADING SCALE	FL	IF	VVS	VS	SI	I
	FLAWLESS INTERNALLY FLAWLESS	VERY VERY SLIGHTLY INCLUDED	VERY SLIGHTLY INCLUDED	SLIGHTLY INCLUDED		INCLUDED



LASERSCRIBE™
Sample Image Used

May 25, 2022
IGI Report Number **LG530295411**
Description **LABORATORY GROWN
DIAMOND**
Shape and Cutting Style **ROUND BRILLIANT**
Measurements **10.59 - 10.65 X 6.38 MM**
GRADING RESULTS
Carat Weight **4.40 CARATS**
Color Grade **F**
Clarity Grade **VS 2**
Cut Grade **IDEAL**



ADDITIONAL GRADING INFORMATION

Polish **EXCELLENT**
Symmetry **EXCELLENT**
Fluorescence **NONE**
Inscription(s) **LABGROWN IGI LG530295411**
Comments: HEARTS & ARROWS
This Laboratory Grown Diamond was created by Chemical Vapor Deposition (CVD) growth process and may include post-growth treatment.
Type IIa



IGI

May 25, 2022	IGI Report No. LG530295411	4.40 CARATS	F	Pointed	EXCELLENT	EXCELLENT	LABGROWN IGI LG530295411
ROUND BRILLIANT	10.59 - 10.65 X 6.38 MM	4.40 CARATS	F	Pointed	EXCELLENT	EXCELLENT	LABGROWN IGI LG530295411
Carat Weight	10.59 - 10.65 X 6.38 MM	4.40 CARATS	F	Pointed	EXCELLENT	EXCELLENT	LABGROWN IGI LG530295411
Color Grade	10.59 - 10.65 X 6.38 MM	4.40 CARATS	F	Pointed	EXCELLENT	EXCELLENT	LABGROWN IGI LG530295411
Clarity Grade	10.59 - 10.65 X 6.38 MM	4.40 CARATS	F	Pointed	EXCELLENT	EXCELLENT	LABGROWN IGI LG530295411
Cut Grade	10.59 - 10.65 X 6.38 MM	4.40 CARATS	F	Pointed	EXCELLENT	EXCELLENT	LABGROWN IGI LG530295411
Depth	10.59 - 10.65 X 6.38 MM	4.40 CARATS	F	Pointed	EXCELLENT	EXCELLENT	LABGROWN IGI LG530295411
Table	10.59 - 10.65 X 6.38 MM	4.40 CARATS	F	Pointed	EXCELLENT	EXCELLENT	LABGROWN IGI LG530295411
Girdle	10.59 - 10.65 X 6.38 MM	4.40 CARATS	F	Pointed	EXCELLENT	EXCELLENT	LABGROWN IGI LG530295411
Culet	10.59 - 10.65 X 6.38 MM	4.40 CARATS	F	Pointed	EXCELLENT	EXCELLENT	LABGROWN IGI LG530295411
Polish	10.59 - 10.65 X 6.38 MM	4.40 CARATS	F	Pointed	EXCELLENT	EXCELLENT	LABGROWN IGI LG530295411
Symmetry	10.59 - 10.65 X 6.38 MM	4.40 CARATS	F	Pointed	EXCELLENT	EXCELLENT	LABGROWN IGI LG530295411
Fluorescence	10.59 - 10.65 X 6.38 MM	4.40 CARATS	F	Pointed	EXCELLENT	EXCELLENT	LABGROWN IGI LG530295411
Inscription(s)	10.59 - 10.65 X 6.38 MM	4.40 CARATS	F	Pointed	EXCELLENT	EXCELLENT	LABGROWN IGI LG530295411



HEARTS & ARROWS
This Laboratory Grown Diamond was created by Chemical Vapor Deposition (CVD) growth process and may include post-growth treatment.
Type IIa