



ELECTRONIC COPY

LABORATORY GROWN DIAMOND REPORT

June 25, 2022
IGI Report Number LG534251509
Description LABORATORY GROWN DIAMOND
Shape and Cutting Style ROUND BRILLIANT
Measurements 10.42 - 10.49 X 6.50 MM

GRADING RESULTS

Carat Weight 4.40 CARATS
Color Grade F
Clarity Grade VS 2
Cut Grade IDEAL

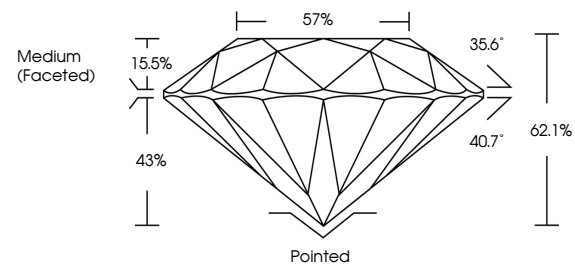
ADDITIONAL GRADING INFORMATION

Polish EXCELLENT
Symmetry EXCELLENT
Fluorescence NONE
Inscription(s) LABGROWN IGI LG534251509

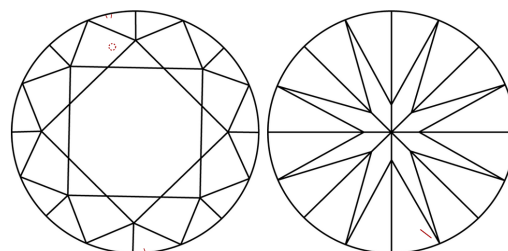
Comments: HEARTS & ARROWS
This Laboratory Grown Diamond was created by Chemical Vapor Deposition (CVD) growth process and may include post-growth treatment.
Type IIa

LG534251509

PROPORTIONS

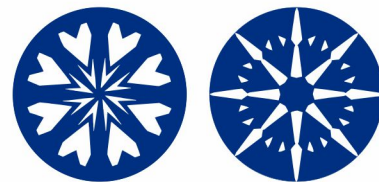


CLARITY CHARACTERISTICS



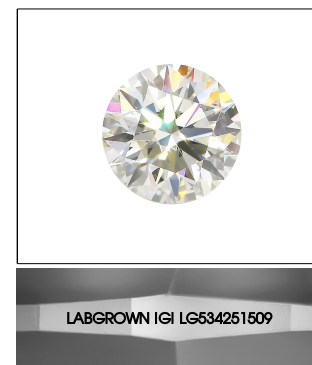
KEY TO SYMBOLS

Red symbols indicate internal characteristics.
Green symbols indicate external characteristics.



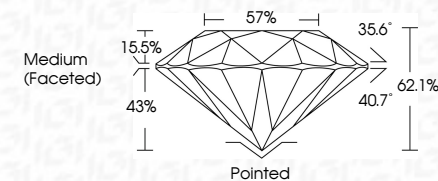
GRADING SCALES

Table showing grading scales for Color (CL), Clarity (10x), and other categories with corresponding grades like Colorless D-F, Near Colorless G-J, etc.



LASERSCRIBE SM
Sample Image Used

June 25, 2022
IGI Report Number LG534251509
Description LABORATORY GROWN DIAMOND
Shape and Cutting Style ROUND BRILLIANT
Measurements 10.42 - 10.49 X 6.50 MM
GRADING RESULTS
Carat Weight 4.40 CARATS
Color Grade F
Clarity Grade VS 2
Cut Grade IDEAL



ADDITIONAL GRADING INFORMATION

Polish EXCELLENT
Symmetry EXCELLENT
Fluorescence NONE
Inscription(s) LABGROWN IGI LG534251509

Comments: HEARTS & ARROWS
This Laboratory Grown Diamond was created by Chemical Vapor Deposition (CVD) growth process and may include post-growth treatment.
Type IIa



Summary table of report details including Report No, Description, Measurements, Grading Results, and Additional Information.