



ELECTRONIC COPY

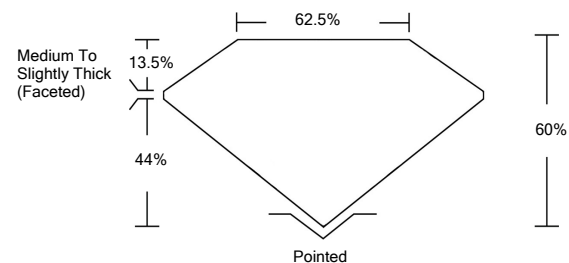
LABORATORY GROWN DIAMOND REPORT

|                                       |                          |
|---------------------------------------|--------------------------|
| April 4, 2022                         |                          |
| IGI Report Number                     | LG519246438              |
| Description                           | LABORATORY GROWN DIAMOND |
| Shape and Cutting Style               | SQUARE CUSHION BRILLIANT |
| Measurements                          | 8.66 X 8.45 X 5.07 MM    |
| <b>GRADING RESULTS</b>                |                          |
| Carat Weight                          | 2.56 CARATS              |
| Color Grade                           | F                        |
| Clarity Grade                         | SI 1                     |
| <b>ADDITIONAL GRADING INFORMATION</b> |                          |
| Polish                                | EXCELLENT                |
| Symmetry                              | EXCELLENT                |
| Fluorescence                          | NONE                     |
| Inscription(s)                        | LABGROWN IGI LG519246438 |

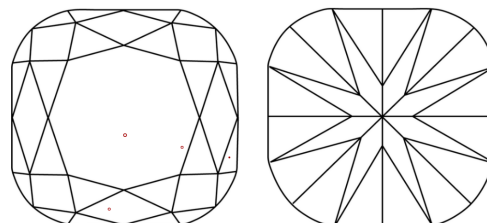
Comments: This Laboratory Grown Diamond was created by Chemical Vapor Deposition (CVD) growth process and may include post-growth treatment. Type IIa

LG519246438

PROPORTIONS



CLARITY CHARACTERISTICS



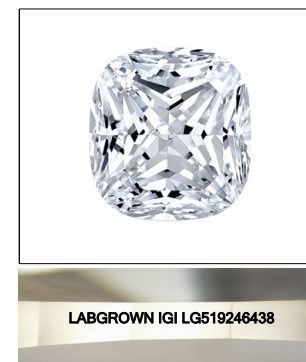
KEY TO SYMBOLS

Red symbols indicate internal characteristics. Green symbols indicate external characteristics.

LABORATORY GROWN DIAMOND REPORT

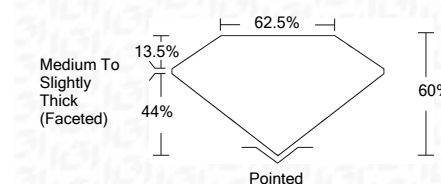
GRADING SCALES

| COLOR GRADING SCALE         | CL                           | NC                          | FT                     | VL                | LT        |   |
|-----------------------------|------------------------------|-----------------------------|------------------------|-------------------|-----------|---|
|                             | COLORLESS D-F                | NEAR COLORLESS G-J          | FAINT K-M              | VERY LIGHT N-R    | LIGHT S-Z |   |
| CLARITY (10x) GRADING SCALE | FL                           | IF                          | VVS                    | VS                | SI        | I |
|                             | FLAWLESS INTERNALLY FLAWLESS | VERY VERY SLIGHTLY INCLUDED | VERY SLIGHTLY INCLUDED | SLIGHTLY INCLUDED | INCLUDED  |   |



LASERSCRIBE<sup>SM</sup> Sample Image Used

|                         |                          |
|-------------------------|--------------------------|
| April 4, 2022           |                          |
| IGI Report Number       | LG519246438              |
| Description             | LABORATORY GROWN DIAMOND |
| Shape and Cutting Style | SQUARE CUSHION BRILLIANT |
| Measurements            | 8.66 X 8.45 X 5.07 MM    |
| <b>GRADING RESULTS</b>  |                          |
| Carat Weight            | 2.56 CARATS              |
| Color Grade             | F                        |
| Clarity Grade           | SI 1                     |



ADDITIONAL GRADING INFORMATION

|                |                          |
|----------------|--------------------------|
| Polish         | EXCELLENT                |
| Symmetry       | EXCELLENT                |
| Fluorescence   | NONE                     |
| Inscription(s) | LABGROWN IGI LG519246438 |

Comments: This Laboratory Grown Diamond was created by Chemical Vapor Deposition (CVD) growth process and may include post-growth treatment. Type IIa



|                            |   |
|----------------------------|---|
| April 4, 2022              |   |
| IGI Report No. LG519246438 |   |
| SQUARE CUSHION BRILLIANT   |   |
| 8.66 X 8.45 X 5.07 MM      |   |
| Carat Weight               | 2.56 CARATS   |
| Color Grade                | F   |
| Clarity Grade              | SI 1  |
| Depth                      | 60%   |
| Table                      | 62.5%   |
| Girdle                     | Medium To Slightly Thick (Faceted)  |
| Culet                      | Pointed   |
| Polish                     | EXCELLENT   |
| Symmetry                   | EXCELLENT   |
| Fluorescence               | NONE  |
| Inscription(s)             | LABGROWN IGI LG519246438  |
| Comments:                  | This Laboratory Grown Diamond was created by Chemical Vapor Deposition (CVD) growth process and may include post-growth treatment. Type IIa |