



ELECTRONIC COPY

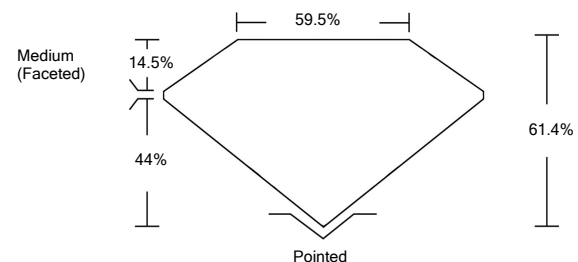
LABORATORY GROWN DIAMOND REPORT

LG529248037

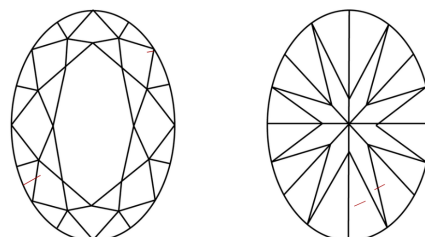
GRADING SCALES

COLOR GRADING SCALE	CL	NC	FT	VL	LT	
	COLORLESS D-F	NEAR COLORLESS G-J	FAINT K-M	VERY LIGHT N-R	LIGHT S-Z	
CLARITY (10x) GRADING SCALE	FL	IF	VVS	VS	SI	I
	FLAWLESS INTERNALLY FLAWLESS	VERY VERY SLIGHTLY INCLUDED	VERY SLIGHTLY INCLUDED	SLIGHTLY INCLUDED	INCLUDED	

PROPORTIONS

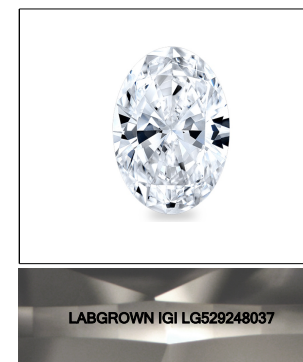


CLARITY CHARACTERISTICS



KEY TO SYMBOLS

Red symbols indicate internal characteristics.
Green symbols indicate external characteristics.



May 8, 2022

IGI Report Number **LG529248037**

Description **LABORATORY GROWN DIAMOND**

Shape and Cutting Style **OVAL BRILLIANT**

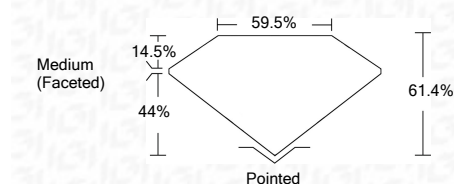
Measurements **11.29 X 7.92 X 4.86 MM**

GRADING RESULTS

Carat Weight **2.61 CARATS**

Color Grade **H**

Clarity Grade **SI 1**



ADDITIONAL GRADING INFORMATION

Polish **EXCELLENT**

Symmetry **EXCELLENT**

Fluorescence **NONE**

Inscription(s) **LABGROWN IGI LG529248037**

Comments: This Laboratory Grown Diamond was created by Chemical Vapor Deposition (CVD) growth process and may include post-growth treatment.
Type IIa

May 8, 2022

IGI Report Number **LG529248037**

Description **LABORATORY GROWN DIAMOND**

Shape and Cutting Style **OVAL BRILLIANT**

Measurements **11.29 X 7.92 X 4.86 MM**

GRADING RESULTS

Carat Weight **2.61 CARATS**

Color Grade **H**

Clarity Grade **SI 1**

ADDITIONAL GRADING INFORMATION

Polish **EXCELLENT**

Symmetry **EXCELLENT**

Fluorescence **NONE**

Inscription(s) **LABGROWN IGI LG529248037**

Comments: This Laboratory Grown Diamond was created by Chemical Vapor Deposition (CVD) growth process and may include post-growth treatment.
Type IIa



May 8, 2022	IGI Report No. LG529248037	2.61 CARATS	H
IGI Report No. LG529248037	OVAL BRILLIANT	2.61 CARATS	H
11.29 X 7.92 X 4.86 MM	11.29 X 7.92 X 4.86 MM	2.61 CARATS	H
Carat Weight	2.61 CARATS	2.61 CARATS	H
Color Grade	H	2.61 CARATS	H
Clarity Grade	SI 1	2.61 CARATS	H
Depth	61.4%	2.61 CARATS	H
Table	59.5%	2.61 CARATS	H
Grades	Medium (Faceted)	2.61 CARATS	H
Culet	Pointed	2.61 CARATS	H
Polish	EXCELLENT	2.61 CARATS	H
Symmetry	EXCELLENT	2.61 CARATS	H
Fluorescence	NONE	2.61 CARATS	H
Inscription(s)	LABGROWN IGI LG529248037	2.61 CARATS	H
Comments:	LABGROWN IGI LG529248037	2.61 CARATS	H

This Laboratory Grown Diamond was created by Chemical Vapor Deposition (CVD) growth process and may include post-growth treatment.
Type IIa