



**ELECTRONIC COPY**

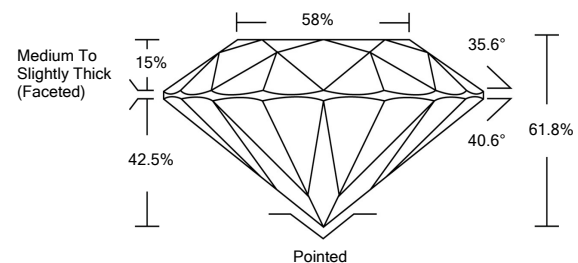
**LABORATORY GROWN DIAMOND REPORT**

LG532275498

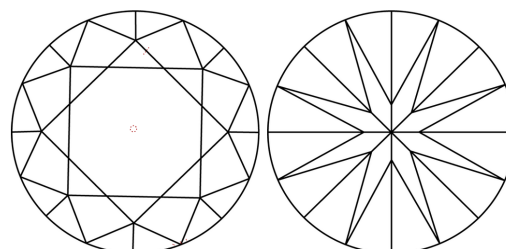
**GRADING SCALES**

|                             |                              |                             |                        |                   |           |   |
|-----------------------------|------------------------------|-----------------------------|------------------------|-------------------|-----------|---|
| COLOR GRADING SCALE         | CL                           | NC                          | FT                     | VL                | LT        |   |
|                             | COLORLESS D-F                | NEAR COLORLESS G-J          | FAINT K-M              | VERY LIGHT N-R    | LIGHT S-Z |   |
| CLARITY (10x) GRADING SCALE | FL                           | IF                          | VVS                    | VS                | SI        | I |
|                             | FLAWLESS INTERNALLY FLAWLESS | VERY VERY SLIGHTLY INCLUDED | VERY SLIGHTLY INCLUDED | SLIGHTLY INCLUDED | INCLUDED  |   |

**PROPORTIONS**

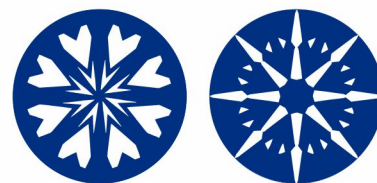


**CLARITY CHARACTERISTICS**

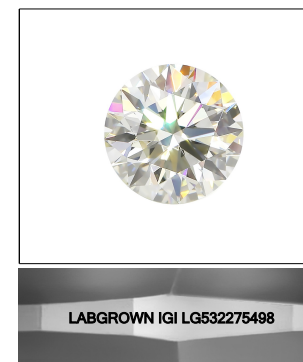


**KEY TO SYMBOLS**

Red symbols indicate internal characteristics.  
Green symbols indicate external characteristics.



www.igi.org



LASERSCRIBE<sup>SM</sup>

Sample Image Used

June 8, 2022

IGI Report Number **LG532275498**

Description **LABORATORY GROWN DIAMOND**

Shape and Cutting Style **ROUND BRILLIANT**

Measurements **10.04 - 10.07 X 6.21 MM**

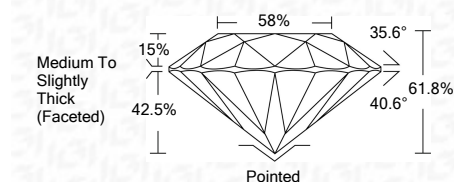
**GRADING RESULTS**

Carat Weight **3.90 CARATS**

Color Grade **G**

Clarity Grade **VS 1**

Cut Grade **IDEAL**



**ADDITIONAL GRADING INFORMATION**

Polish **EXCELLENT**

Symmetry **EXCELLENT**

Fluorescence **NONE**

Inscription(s) **LABGROWN IGI LG532275498**

Comments: HEARTS & ARROWS  
This Laboratory Grown Diamond was created by Chemical Vapor Deposition (CVD) growth process and may include post-growth treatment.  
Type IIa



|                            |             |   |      |       |       |     |                                    |         |           |           |      |                          |
|----------------------------|-------------|---|------|-------|-------|-----|------------------------------------|---------|-----------|-----------|------|--------------------------|
| IGI Report No. LG532275498 | 3.90 CARATS | G | VS 1 | IDEAL | 61.8% | 58% | Medium To Slightly Thick (Faceted) | Pointed | EXCELLENT | EXCELLENT | NONE | LABGROWN IGI LG532275498 |
| ROUND BRILLIANT            |             |   |      |       |       |     |                                    |         |           |           |      |                          |
| 10.04 - 10.07 X 6.21 MM    |             |   |      |       |       |     |                                    |         |           |           |      |                          |
| Carat Weight               |             |   |      |       |       |     |                                    |         |           |           |      |                          |
| Color Grade                |             |   |      |       |       |     |                                    |         |           |           |      |                          |
| Clarity Grade              |             |   |      |       |       |     |                                    |         |           |           |      |                          |
| Cut Grade                  |             |   |      |       |       |     |                                    |         |           |           |      |                          |
| Depth                      |             |   |      |       |       |     |                                    |         |           |           |      |                          |
| Table                      |             |   |      |       |       |     |                                    |         |           |           |      |                          |
| Girdle                     |             |   |      |       |       |     |                                    |         |           |           |      |                          |
| Culet                      |             |   |      |       |       |     |                                    |         |           |           |      |                          |
| Polish                     |             |   |      |       |       |     |                                    |         |           |           |      |                          |
| Symmetry                   |             |   |      |       |       |     |                                    |         |           |           |      |                          |
| Fluorescence               |             |   |      |       |       |     |                                    |         |           |           |      |                          |
| Inscriptions(s)            |             |   |      |       |       |     |                                    |         |           |           |      |                          |



**HEARTS & ARROWS**  
This Laboratory Grown Diamond was created by Chemical Vapor Deposition (CVD) growth process and may include post-growth treatment.  
Type IIa