



**ELECTRONIC COPY**

LG533214248

**LABORATORY GROWN DIAMOND REPORT**

June 13, 2022  
 IGI Report Number **LG533214248**  
 Description **LABORATORY GROWN  
DIAMOND**  
 Shape and Cutting Style **ROUND BRILLIANT**  
 Measurements **7.22 - 7.28 X 4.60 MM**

**GRADING RESULTS**

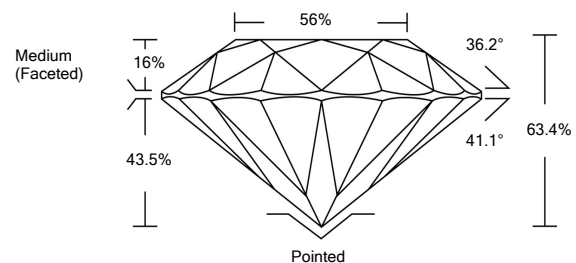
Carat Weight **1.50 CARAT**  
 Color Grade **D**  
 Clarity Grade **VS 1**  
 Cut Grade **EXCELLENT**

**ADDITIONAL GRADING INFORMATION**

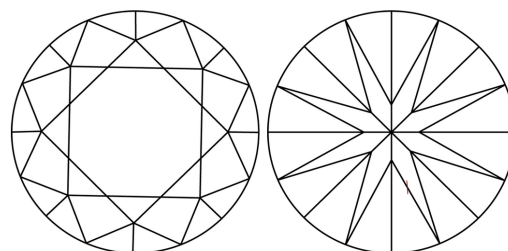
Polish **EXCELLENT**  
 Symmetry **EXCELLENT**  
 Fluorescence **NONE**  
 Inscription(s) **LABGROWN IGI LG533214248**

Comments: As Grown - No indication of post-growth treatment. This Laboratory Grown Diamond was created by High Pressure High Temperature (HPHT) growth process. Type II

**PROPORTIONS**



**CLARITY CHARACTERISTICS**

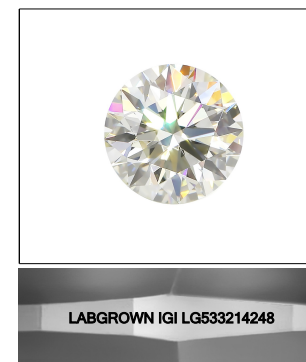


**KEY TO SYMBOLS**

Red symbols indicate internal characteristics.  
 Green symbols indicate external characteristics.

**GRADING SCALES**

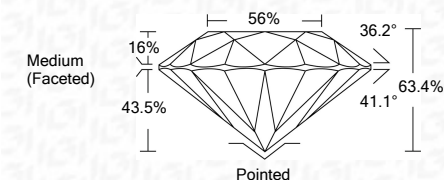
COLOR GRADING SCALE	CL	NC	FT	VL	LT	
	COLORLESS D-F	NEAR COLORLESS G-J	FAINT K-M	VERY LIGHT N-R	LIGHT S-Z	
CLARITY (10x) GRADING SCALE	FL	IF	VVS	VS	SI	I
	FLAWLESS INTERNALLY FLAWLESS	VERY VERY SLIGHTLY INCLUDED	VERY SLIGHTLY INCLUDED	SLIGHTLY INCLUDED	INCLUDED	



LASERSCRIBE<sup>SM</sup>

Sample Image Used

June 13, 2022  
 IGI Report Number **LG533214248**  
 Description **LABORATORY GROWN  
DIAMOND**  
 Shape and Cutting Style **ROUND BRILLIANT**  
 Measurements **7.22 - 7.28 X 4.60 MM**  
**GRADING RESULTS**  
 Carat Weight **1.50 CARAT**  
 Color Grade **D**  
 Clarity Grade **VS 1**  
 Cut Grade **EXCELLENT**



**ADDITIONAL GRADING INFORMATION**

Polish **EXCELLENT**  
 Symmetry **EXCELLENT**  
 Fluorescence **NONE**  
 Inscription(s) **LABGROWN IGI LG533214248**  
 Comments: As Grown - No indication of post-growth treatment. This Laboratory Grown Diamond was created by High Pressure High Temperature (HPHT) growth process. Type II



**IGI**



June 13, 2022	IGI Report No. LG533214248	1.50 CARAT	D	Pointed	EXCELLENT	EXCELLENT	LABGROWN IGI LG533214248
ROUND BRILLIANT	7.22 - 7.28 X 4.60 MM	EXCELLENT	VS 1	EXCELLENT	EXCELLENT	EXCELLENT	None
Carat Weight	Color Grade	Clarity Grade	Depth	Table	Girdle	Culet	Polish
			63.4%	56%	Medium (Faceted)		Symmetry
							Inscriptions(s)
							Comments:
							As Grown - No indication of post-growth treatment. This Laboratory Grown Diamond was created by High Pressure High Temperature (HPHT) growth process. Type II