



ELECTRONIC COPY

LABORATORY GROWN DIAMOND REPORT

June 9, 2022
IGI Report Number LG520298221
Description LABORATORY GROWN DIAMOND
Shape and Cutting Style ROUND BRILLIANT
Measurements 7.35 - 7.38 X 4.56 MM

GRADING RESULTS

Carat Weight 1.51 CARAT
Color Grade G
Clarity Grade VS 2
Cut Grade IDEAL

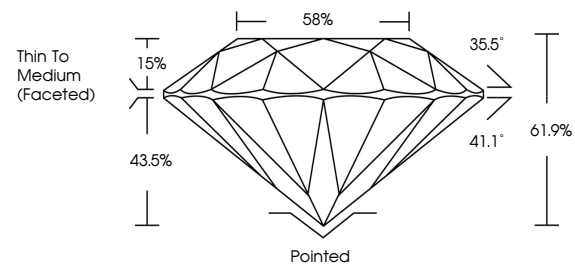
ADDITIONAL GRADING INFORMATION

Polish EXCELLENT
Symmetry EXCELLENT
Fluorescence NONE
Inscription(s) LABGROWN IGI LG520298221

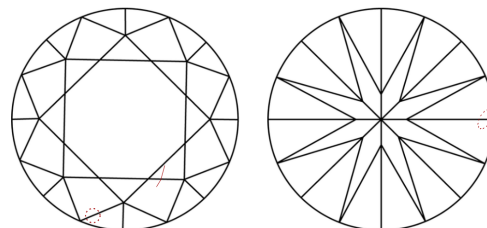
Comments: This Laboratory Grown Diamond was created by Chemical Vapor Deposition (CVD) growth process and may include post-growth treatment. Type IIa

LG520298221

PROPORTIONS



CLARITY CHARACTERISTICS



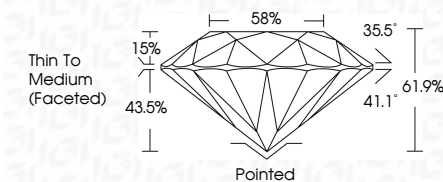
KEY TO SYMBOLS

Red symbols indicate internal characteristics.
Green symbols indicate external characteristics.

GRADING SCALES

Table showing color grading scales (CL, NC, FT, VLT, LT) and clarity (10x) grading scales (FL, IF, VVS, VS, SI, I) with their corresponding descriptions.

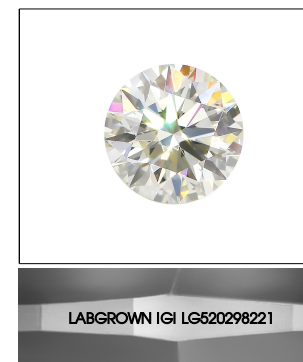
June 9, 2022
IGI Report Number LG520298221
Description LABORATORY GROWN DIAMOND
Shape and Cutting Style ROUND BRILLIANT
Measurements 7.35 - 7.38 X 4.56 MM
GRADING RESULTS
Carat Weight 1.51 CARAT
Color Grade G
Clarity Grade VS 2
Cut Grade IDEAL



ADDITIONAL GRADING INFORMATION

Polish EXCELLENT
Symmetry EXCELLENT
Fluorescence NONE
Inscription(s) LABGROWN IGI LG520298221

Comments: This Laboratory Grown Diamond was created by Chemical Vapor Deposition (CVD) growth process and may include post-growth treatment. Type IIa



LABGROWN IGI LG520298221

LASERSCRIBE SM

Sample Image Used



IGI

June 9, 2022
IGI Report No. LG520298221
ROUND BRILLIANT
7.35 - 7.38 X 4.56 MM
Carat Weight 1.51 CARAT
Color Grade G
Clarity Grade VS 2
Cut Grade IDEAL
Depth 61.9%
Table 58%
Girdle Thin To Medium (Faceted)
Culet Pointed
Polish EXCELLENT
Symmetry EXCELLENT
Fluorescence NONE
Inscription(s) LABGROWN IGI LG520298221
Comments: This Laboratory Grown Diamond was created by Chemical Vapor Deposition (CVD) growth process and may include post-growth treatment. Type IIa