



ELECTRONIC COPY

LABORATORY GROWN DIAMOND REPORT

October 19, 2022
 IGI Report Number **LG551207941**
 Description **LABORATORY GROWN
DIAMOND**
 Shape and Cutting Style **ROUND BRILLIANT**
 Measurements **8.09 - 8.11 X 5.04 MM**

GRADING RESULTS

Carat Weight **2.03 CARATS**
 Color Grade **F**
 Clarity Grade **SI 2**
 Cut Grade **IDEAL**

ADDITIONAL GRADING INFORMATION

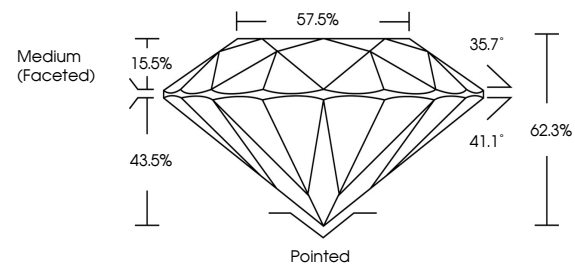
Polish **EXCELLENT**
 Symmetry **EXCELLENT**
 Fluorescence **NONE**

Inscription(s) **LABGROWN (LGI) LG551207941**

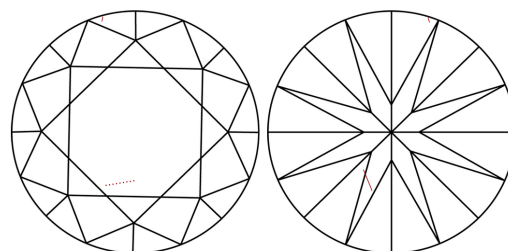
Comments: This Laboratory Grown Diamond was created by Chemical Vapor Deposition (CVD) growth process and may include post-growth treatment. Type IIa

LG551207941

PROPORTIONS



CLARITY CHARACTERISTICS



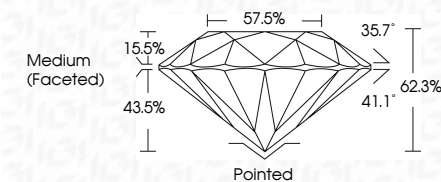
KEY TO SYMBOLS

Red symbols indicate internal characteristics.
 Green symbols indicate external characteristics.

GRADING SCALES

COLOR GRADING SCALE	CL	NC	FT	VLT	LT	
	COLORLESS D-F	NEAR COLORLESS G-J	FAINT K-M	VERY LIGHT N-R	LIGHT S-Z	
CLARITY (10x) GRADING SCALE	FL	IF	VVS	VS	SI	I
	FLAWLESS INTERNALLY FLAWLESS	VERY VERY SLIGHTLY INCLUDED	VERY SLIGHTLY INCLUDED	SLIGHTLY INCLUDED	INCLUDED	

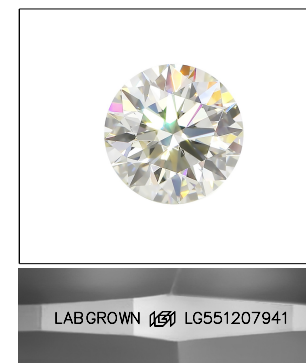
October 19, 2022
 IGI Report Number **LG551207941**
 Description **LABORATORY GROWN
DIAMOND**
 Shape and Cutting Style **ROUND BRILLIANT**
 Measurements **8.09 - 8.11 X 5.04 MM**
GRADING RESULTS
 Carat Weight **2.03 CARATS**
 Color Grade **F**
 Clarity Grade **SI 2**
 Cut Grade **IDEAL**



ADDITIONAL GRADING INFORMATION

Polish **EXCELLENT**
 Symmetry **EXCELLENT**
 Fluorescence **NONE**
 Inscription(s) **LABGROWN (LGI) LG551207941**

Comments: This Laboratory Grown Diamond was created by Chemical Vapor Deposition (CVD) growth process and may include post-growth treatment. Type IIa



LASERSCRIBESM
 Sample Image Used



IGI

October 19, 2022
 IGI Report No LG551207941
ROUND BRILLIANT
8.09 - 8.11 X 5.04 MM
 Carat Weight **2.03 CARATS**
 Color Grade **F**
 Clarity Grade **SI 2**
 Cut Grade **IDEAL**
 Depth **62.3%**
 Table **15.5%**
 Girdle **43.5%**
 Medium (Faceted)
 Culet **Pointed**
 Polish **EXCELLENT**
 Symmetry **EXCELLENT**
 Fluorescence **NONE**
 Inscription(s) **LABGROWN (LGI) LG551207941**
 Comments: This Laboratory Grown Diamond was created by Chemical Vapor Deposition (CVD) growth process and may include post-growth treatment. Type IIa