

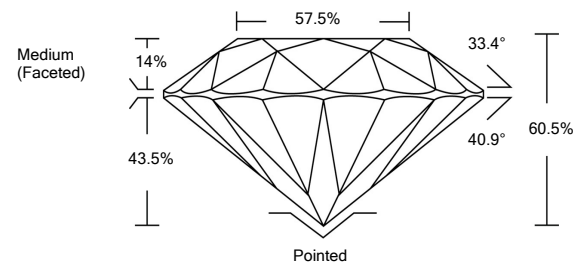


**ELECTRONIC COPY**

**LABORATORY GROWN DIAMOND REPORT**

LG533284010

**PROPORTIONS**



**GRADING SCALES**

COLOR GRADING SCALE	CL	NC	FT	VL	LT	
	COLORLESS D-F	NEAR COLORLESS G-J	FAINT K-M	VERY LIGHT N-R	LIGHT S-Z	
CLARITY (10x) GRADING SCALE	FL	IF	VVS	VS	SI	I
	FLAWLESS INTERNALLY FLAWLESS	VERY VERY SLIGHTLY INCLUDED	VERY SLIGHTLY INCLUDED	SLIGHTLY INCLUDED	INCLUDED	

June 9, 2022  
 IGI Report Number **LG533284010**  
 Description **LABORATORY GROWN DIAMOND**  
 Shape and Cutting Style **ROUND BRILLIANT**  
 Measurements **6.54 - 6.56 X 3.96 MM**

June 9, 2022  
 IGI Report Number **LG533284010**  
 Description **LABORATORY GROWN DIAMOND**  
 Shape and Cutting Style **ROUND BRILLIANT**  
 Measurements **6.54 - 6.56 X 3.96 MM**

**GRADING RESULTS**

Carat Weight **1.02 CARAT**  
 Color Grade **G**  
 Clarity Grade **VVS 2**  
 Cut Grade **IDEAL**

**GRADING RESULTS**  
 Carat Weight **1.02 CARAT**  
 Color Grade **G**  
 Clarity Grade **VVS 2**  
 Cut Grade **IDEAL**

**ADDITIONAL GRADING INFORMATION**

Polish **EXCELLENT**  
 Symmetry **EXCELLENT**  
 Fluorescence **NONE**

**ADDITIONAL GRADING INFORMATION**

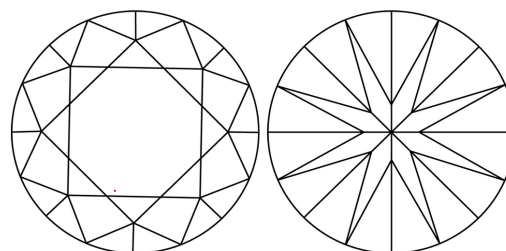
Polish **EXCELLENT**  
 Symmetry **EXCELLENT**  
 Fluorescence **NONE**

Inscription(s) **LABGROWN IGI LG533284010**

Comments: This Laboratory Grown Diamond was created by Chemical Vapor Deposition (CVD) growth process and may include post-growth treatment.  
 Type IIa

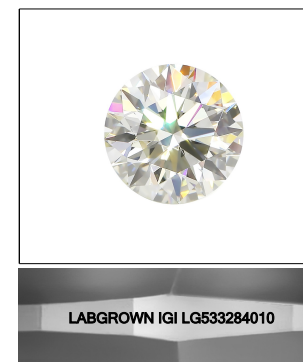
Inscription(s) **LABGROWN IGI LG533284010**  
 Comments: This Laboratory Grown Diamond was created by Chemical Vapor Deposition (CVD) growth process and may include post-growth treatment.  
 Type IIa

**CLARITY CHARACTERISTICS**



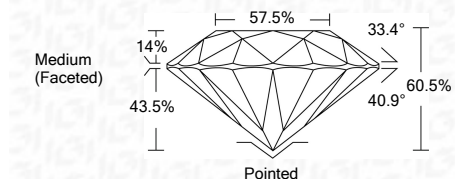
**KEY TO SYMBOLS**

Red symbols indicate internal characteristics.  
 Green symbols indicate external characteristics.



**LASERSCRIBE<sup>SM</sup>**

Sample Image Used



**IGI**

June 9, 2022  
 IGI Report No. **LG533284010**  
**ROUND BRILLIANT**  
**6.54 - 6.56 X 3.96 MM**  
 Carat Weight **1.02 CARAT**  
 Color Grade **G**  
 Clarity Grade **VVS 2**  
 Cut Grade **IDEAL**  
 Depth **60.5%**  
 Table **57.5%**  
 Girdle **Medium (Faceted)**  
 Culet **Pointed**  
 Polish **EXCELLENT**  
 Symmetry **EXCELLENT**  
 Fluorescence **NONE**  
 Inscription(s) **LABGROWN IGI LG533284010**  
 Comments: This Laboratory Grown Diamond was created by Chemical Vapor Deposition (CVD) growth process and may include post-growth treatment.  
 Type IIa