



ELECTRONIC COPY

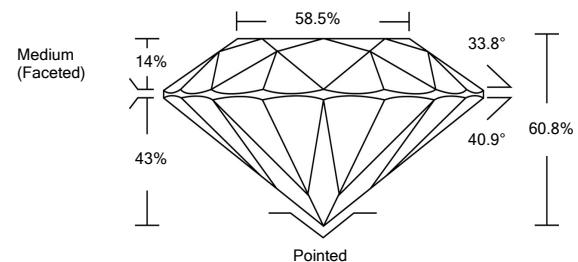
LABORATORY GROWN DIAMOND REPORT

| | |
|---------------------------------------|-------------------------------------|
| February 1, 2022 | |
| IGI Report Number | LG515202662 |
| Description | LABORATORY GROWN DIAMOND |
| Shape and Cutting Style | ROUND BRILLIANT |
| Measurements | 7.46 - 7.49 X 4.55 MM |
| GRADING RESULTS | |
| Carat Weight | 1.56 CARAT |
| Color Grade | G |
| Clarity Grade | VS 2 |
| Cut Grade | IDEAL |
| ADDITIONAL GRADING INFORMATION | |
| Polish | EXCELLENT |
| Symmetry | EXCELLENT |
| Fluorescence | NONE |
| Inscription(s) | LABGROWN IGI LG515202662 |

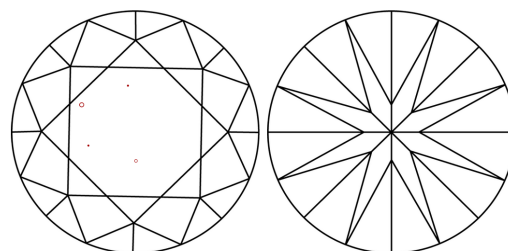
Comments: This Laboratory Grown Diamond was created by Chemical Vapor Deposition (CVD) growth process and may include post-growth treatment.
Type IIa

LG515202662

PROPORTIONS



CLARITY CHARACTERISTICS



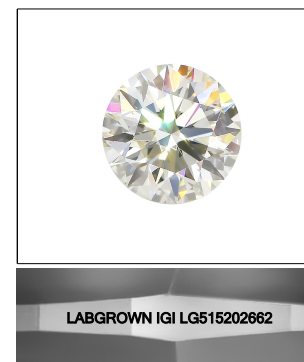
KEY TO SYMBOLS

Red symbols indicate internal characteristics.
Green symbols indicate external characteristics.

**LABORATORY GROWN
DIAMOND REPORT**

GRADING SCALES

| | | | | | | |
|-----------------------------|------------------------------|-----------------------------|------------------------|-------------------|-----------|---|
| COLOR GRADING SCALE | CL | NC | FT | VL | LT | |
| | COLORLESS D-F | NEAR COLORLESS G-J | FAINT K-M | VERY LIGHT N-R | LIGHT S-Z | |
| CLARITY (10x) GRADING SCALE | FL | IF | VVS | VS | SI | I |
| | FLAWLESS INTERNALLY FLAWLESS | VERY VERY SLIGHTLY INCLUDED | VERY SLIGHTLY INCLUDED | SLIGHTLY INCLUDED | INCLUDED | |

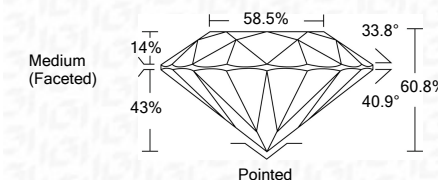


LASERSCRIBESM

Sample Image Used

LABORATORY GROWN DIAMOND REPORT

| | |
|-------------------------|-------------------------------------|
| February 1, 2022 | |
| IGI Report Number | LG515202662 |
| Description | LABORATORY GROWN DIAMOND |
| Shape and Cutting Style | ROUND BRILLIANT |
| Measurements | 7.46 - 7.49 X 4.55 MM |
| GRADING RESULTS | |
| Carat Weight | 1.56 CARAT |
| Color Grade | G |
| Clarity Grade | VS 2 |
| Cut Grade | IDEAL |



| | |
|---------------------------------------|---------------------------------|
| ADDITIONAL GRADING INFORMATION | |
| Polish | EXCELLENT |
| Symmetry | EXCELLENT |
| Fluorescence | NONE |
| Inscription(s) | LABGROWN IGI LG515202662 |

Comments: This Laboratory Grown Diamond was created by Chemical Vapor Deposition (CVD) growth process and may include post-growth treatment.
Type IIa



IGI

| | |
|---|---------------------------------|
| February 1, 2022 | |
| IGI Report No. LG515202662 | |
| ROUND BRILLIANT | |
| 7.46 - 7.49 X 4.55 MM | |
| Carat Weight | 1.56 CARAT |
| Color Grade | G |
| Clarity Grade | VS 2 |
| Cut Grade | IDEAL |
| Depth | 60.8% |
| Table | 58.5% |
| Girdle | Medium (Faceted) |
| Culet | Pointed |
| Polish | EXCELLENT |
| Symmetry | EXCELLENT |
| Fluorescence | NONE |
| Inscription(s) | LABGROWN IGI LG515202662 |
| Comments: This Laboratory Grown Diamond was created by Chemical Vapor Deposition (CVD) growth process and may include post-growth treatment. Type IIa | |

