



ELECTRONIC COPY

LABORATORY GROWN DIAMOND REPORT

July 19, 2022
IGI Report Number LG534233613
Description LABORATORY GROWN DIAMOND
Shape and Cutting Style CUT CORNERED RECTANGULAR MODIFIED BRILLIANT
Measurements 7.65 X 5.36 X 3.53 MM

GRADING RESULTS

Carat Weight 1.27 CARAT
Color Grade E
Clarity Grade VS 2

ADDITIONAL GRADING INFORMATION

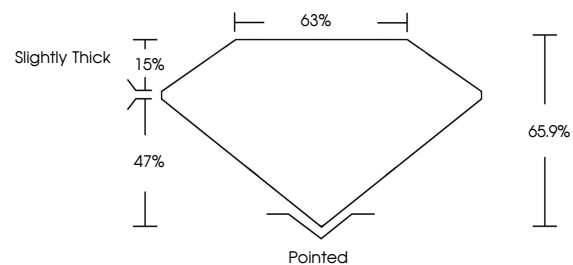
Polish EXCELLENT
Symmetry EXCELLENT
Fluorescence NONE

Inscription(s) LABGROWN IGI LG534233613

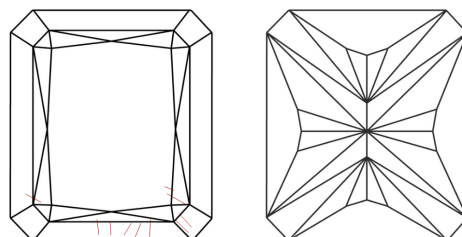
Comments: As Grown - No indication of post-growth treatment. This Laboratory Grown Diamond was created by High Pressure High Temperature (HPHT) growth process. Type II

LG534233613

PROPORTIONS



CLARITY CHARACTERISTICS



KEY TO SYMBOLS

Red symbols indicate internal characteristics. Green symbols indicate external characteristics.

LABORATORY GROWN DIAMOND REPORT

GRADING SCALES

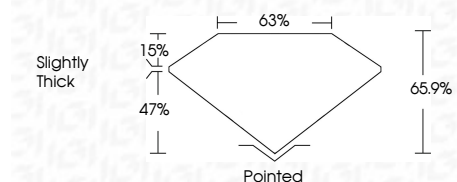
Table with 2 columns: COLOR GRADING SCALE and CLARITY (10x) GRADING SCALE. Rows include color grades (CL, NC, FT, VLT, LT) and clarity grades (FL, IF, VVS, VS, SI, I).

LABORATORY GROWN DIAMOND REPORT

July 19, 2022
IGI Report Number LG534233613
Description LABORATORY GROWN DIAMOND
Shape and Cutting Style CUT CORNERED RECTANGULAR MODIFIED BRILLIANT
Measurements 7.65 X 5.36 X 3.53 MM

GRADING RESULTS

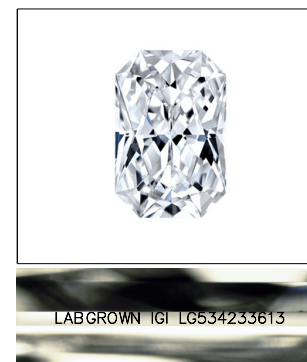
Carat Weight 1.27 CARAT
Color Grade E
Clarity Grade VS 2



ADDITIONAL GRADING INFORMATION

Polish EXCELLENT
Symmetry EXCELLENT
Fluorescence NONE
Inscription(s) LABGROWN IGI LG534233613

Comments: As Grown - No indication of post-growth treatment. This Laboratory Grown Diamond was created by High Pressure High Temperature (HPHT) growth process. Type II



LASERSCRIBE SM

Sample Image Used



Summary table of report details: July 19, 2022, IGI Report No. LG534233613, CUT CORNERED RECT. MODIFIED, 7.65 X 5.36 X 3.53 MM, Carat Weight 1.27 CARAT, Color Grade E, Clarity Grade VS 2, Depth 65.9%, Table 63%, Girdle Slightly Thick, Culet Pointed, Polish EXCELLENT, Symmetry EXCELLENT, Fluorescence NONE, Inscription(s) LABGROWN IGI LG534233613, Comments: As Grown - No indication of post-growth treatment. The Laboratory Grown Diamond was created by High Pressure High Temperature (HPHT) growth process. Type II