



ELECTRONIC COPY

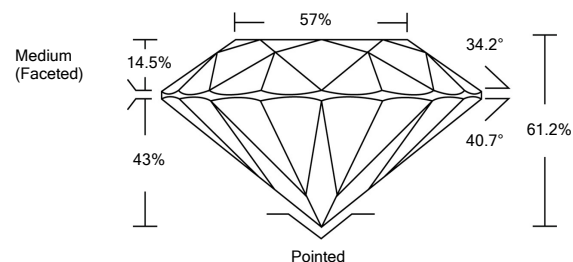
LG524239798

LABORATORY GROWN DIAMOND REPORT

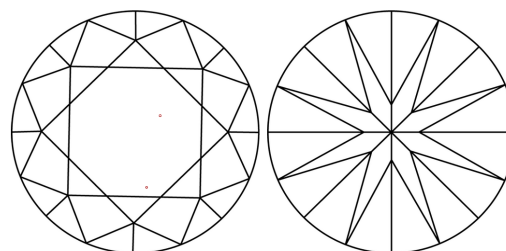
GRADING SCALES

COLOR GRADING SCALE	CL	NC	FT	VL	LT	
	COLORLESS D-F	NEAR COLORLESS G-J	FAINT K-M	VERY LIGHT N-R	LIGHT S-Z	
CLARITY (10x) GRADING SCALE	FL	IF	VVS	VS	SI	I
	FLAWLESS INTERNALLY FLAWLESS	VERY VERY SLIGHTLY INCLUDED	VERY SLIGHTLY INCLUDED	SLIGHTLY INCLUDED	INCLUDED	

PROPORTIONS

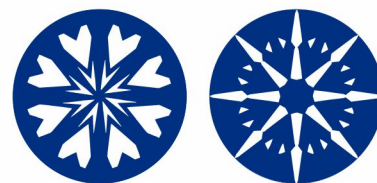


CLARITY CHARACTERISTICS



KEY TO SYMBOLS

Red symbols indicate internal characteristics.
Green symbols indicate external characteristics.



www.igi.org

April 12, 2022

IGI Report Number

LG524239798

Description

**LABORATORY GROWN
DIAMOND**

Shape and Cutting Style

ROUND BRILLIANT

Measurements

8.31 - 8.33 X 5.09 MM

GRADING RESULTS

Carat Weight

2.16 CARATS

Color Grade

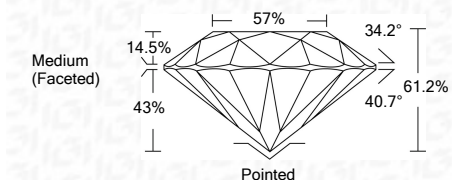
H

Clarity Grade

VS 1

Cut Grade

IDEAL



ADDITIONAL GRADING INFORMATION

Polish

EXCELLENT

Symmetry

EXCELLENT

Fluorescence

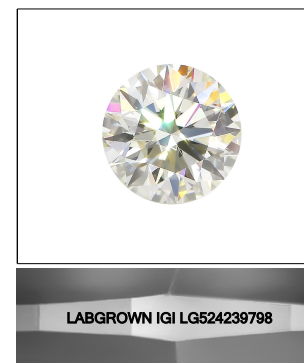
NONE

Inscription(s)

LABGROWN IGI LG524239798

Comments: HEARTS & ARROWS

This Laboratory Grown Diamond was created by Chemical Vapor Deposition (CVD) growth process and may include post-growth treatment.
Type IIa



LASERSCRIBESM

Sample Image Used



IGI

April 12, 2022	IGI Report No. LG524239798	2.16 CARATS	H
ROUND BRILLIANT	8.31 - 8.33 X 5.09 MM	VS 1	IDEAL
Color Grade	Clarity Grade	Depth	Table
2.16 CARATS	VS 1	61.2%	57%
Color Grade	Clarity Grade	Cut Grade	Grille
H	VS 1	IDEAL	Medium (Faceted)
Color Grade	Clarity Grade	Cut Grade	Culet
H	VS 1	IDEAL	EXCELLENT
Color Grade	Clarity Grade	Cut Grade	Symmetry
H	VS 1	IDEAL	EXCELLENT
Color Grade	Clarity Grade	Cut Grade	Fluorescence
H	VS 1	IDEAL	NONE
Color Grade	Clarity Grade	Cut Grade	Inscription(s)
H	VS 1	IDEAL	LABGROWN IGI LG524239798
Color Grade	Clarity Grade	Cut Grade	Comments:
H	VS 1	IDEAL	HEARTS & ARROWS
Color Grade	Clarity Grade	Cut Grade	This Laboratory Grown Diamond was created by Chemical Vapor Deposition (CVD) growth process and may include post-growth treatment.
H	VS 1	IDEAL	Type IIa