



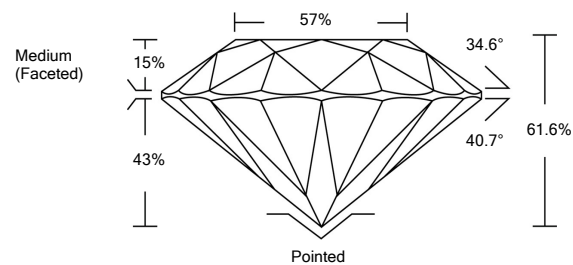
ELECTRONIC COPY

LG524239795

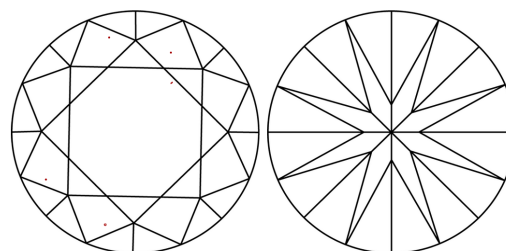
GRADING SCALES

COLOR GRADING SCALE	CL	NC	FT	VL	LT	
	COLORLESS D-F	NEAR COLORLESS G-J	FAINT K-M	VERY LIGHT N-R	LIGHT S-Z	
CLARITY (10x) GRADING SCALE	FL	IF	VVS	VS	SI	I
	FLAWLESS INTERNALLY FLAWLESS	VERY VERY SLIGHTLY INCLUDED	VERY SLIGHTLY INCLUDED	SLIGHTLY INCLUDED	INCLUDED	

PROPORTIONS

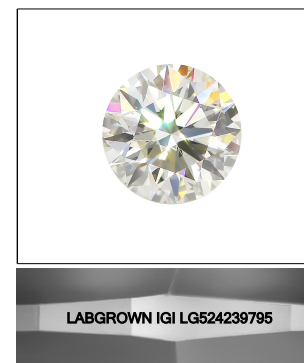
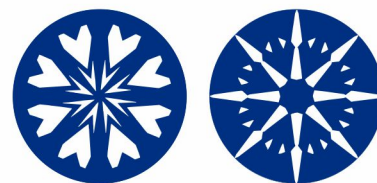


CLARITY CHARACTERISTICS



KEY TO SYMBOLS

Red symbols indicate internal characteristics. Green symbols indicate external characteristics.



LASERSCRIBESM Sample Image Used

April 12, 2022

IGI Report Number

LG524239795

Description

LABORATORY GROWN DIAMOND

Shape and Cutting Style

ROUND BRILLIANT

Measurements

8.38 - 8.43 X 5.18 MM

GRADING RESULTS

Carat Weight

2.24 CARATS

Color Grade

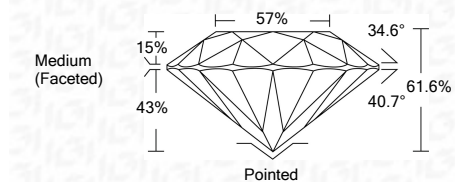
G

Clarity Grade

VS 1

Cut Grade

IDEAL



ADDITIONAL GRADING INFORMATION

Polish

EXCELLENT

Symmetry

EXCELLENT

Fluorescence

NONE

Inscription(s)

LABGROWN IGI LG524239795

Comments: HEARTS & ARROWS

This Laboratory Grown Diamond was created by Chemical Vapor Deposition (CVD) growth process and may include post-growth treatment. Type IIa



IGI

April 12, 2022
IGI Report No. LG524239795
ROUND BRILLIANT
8.38 - 8.43 X 5.18 MM

Carat Weight 2.24 CARATS

Color Grade G

Clarity Grade VS 1

Depth IDEAL

Table 61.6%

Girdle 57%

Culet Medium (Faceted)

Polish EXCELLENT

Symmetry EXCELLENT

Fluorescence NONE

Inscriptions(s) LABGROWN IGI LG524239795

Comments: HEARTS & ARROWS
This Laboratory Grown Diamond was created by Chemical Vapor Deposition (CVD) growth process and may include post-growth treatment. Type IIa

