

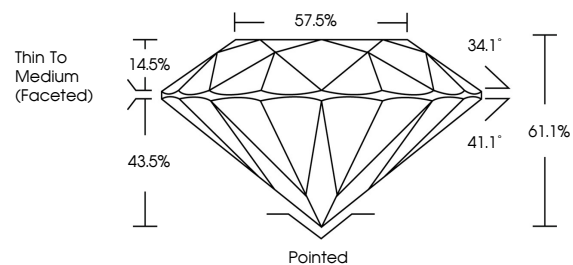


ELECTRONIC COPY

LABORATORY GROWN DIAMOND REPORT

LG537256943

PROPORTIONS



GRADING SCALES

COLOR GRADING SCALE	CL	NC	FT	VLT	LT	
	COLORLESS D-F	NEAR COLORLESS G-J	FAINT K-M	VERY LIGHT N-R	LIGHT S-Z	
CLARITY (10x) GRADING SCALE	FL	IF	VVS	VS	SI	I
	FLAWLESS INTERNALLY FLAWLESS	VERY VERY SLIGHTLY INCLUDED	VERY SLIGHTLY INCLUDED	SLIGHTLY INCLUDED	INCLUDED	

July 13, 2022

IGI Report Number

LG537256943

Description

LABORATORY GROWN DIAMOND

Shape and Cutting Style

ROUND BRILLIANT

Measurements

6.51 - 6.55 X 3.98 MM

GRADING RESULTS

Carat Weight

1.02 CARAT

Color Grade

E

Clarity Grade

VS 1

Cut Grade

IDEAL

July 13, 2022

IGI Report Number

LG537256943

Description

LABORATORY GROWN DIAMOND

Shape and Cutting Style

ROUND BRILLIANT

Measurements

6.51 - 6.55 X 3.98 MM

GRADING RESULTS

Carat Weight

1.02 CARAT

Color Grade

E

Clarity Grade

VS 1

Cut Grade

IDEAL

ADDITIONAL GRADING INFORMATION

Polish

EXCELLENT

Symmetry

EXCELLENT

Fluorescence

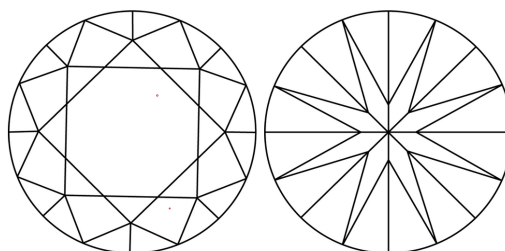
NONE

Inscription(s)

LABGROWN IGI LG537256943

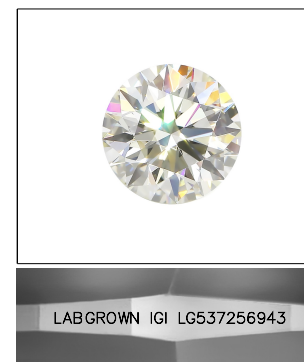
Comments: This Laboratory Grown Diamond was created by Chemical Vapor Deposition (CVD) growth process and may include post-growth treatment. Type IIa

CLARITY CHARACTERISTICS



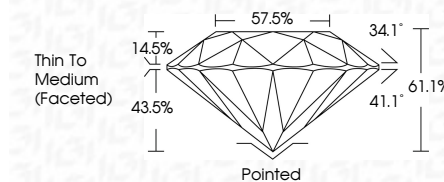
KEY TO SYMBOLS

Red symbols indicate internal characteristics. Green symbols indicate external characteristics.



LASERSCRIBE SM

Sample Image Used



ADDITIONAL GRADING INFORMATION

Polish

EXCELLENT

Symmetry

EXCELLENT

Fluorescence

NONE

Inscription(s)

LABGROWN IGI LG537256943

Comments: This Laboratory Grown Diamond was created by Chemical Vapor Deposition (CVD) growth process and may include post-growth treatment. Type IIa



IGI

July 13, 2022	IGI Report No LG537256943	1.02 CARAT	E
ROUND BRILLIANT	6.51 - 6.55 X 3.98 MM	VS 1	IDEAL
Color Grade	Clarity Grade	Cut Grade	Depth
E	VS 1	IDEAL	61.1%
Table	Thin To Medium (Faceted)	Culet	Pointed
57.5%	None	Polish	EXCELLENT
Grade	None	Symmetry	EXCELLENT
		Fluorescence	NONE
		Inscription(s)	LABGROWN IGI LG537256943
		Comments:	This Laboratory Grown Diamond was created by Chemical Vapor Deposition (CVD) growth process and may include post-growth treatment. Type IIa