



ELECTRONIC COPY

LABORATORY GROWN DIAMOND REPORT

July 12, 2022
IGI Report Number LG537241341
Description LABORATORY GROWN DIAMOND
Shape and Cutting Style ROUND BRILLIANT
Measurements 9.01 - 9.04 X 5.54 MM

GRADING RESULTS

Carat Weight 2.78 CARATS
Color Grade G
Clarity Grade VS 1
Cut Grade IDEAL

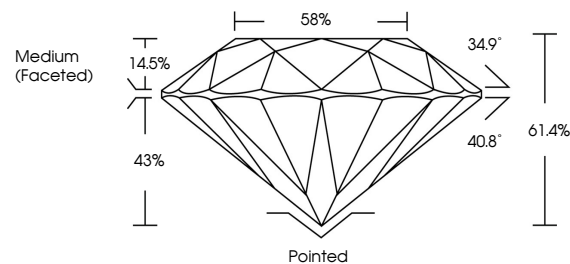
ADDITIONAL GRADING INFORMATION

Polish EXCELLENT
Symmetry EXCELLENT
Fluorescence NONE
Inscription(s) LABGROWN IGI LG537241341

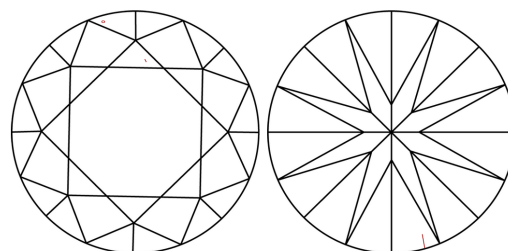
Comments: HEARTS & ARROWS
This Laboratory Grown Diamond was created by Chemical Vapor Deposition (CVD) growth process and may include post-growth treatment.
Type IIa

LG537241341

PROPORTIONS

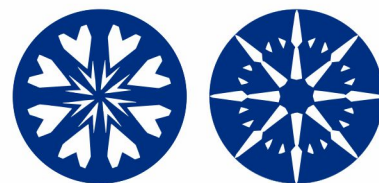


CLARITY CHARACTERISTICS



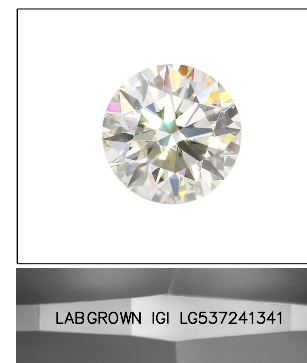
KEY TO SYMBOLS

Red symbols indicate internal characteristics.
Green symbols indicate external characteristics.



GRADING SCALES

Table with 2 rows: COLOR GRADING SCALE and CLARITY (10x) GRADING SCALE, listing various grades from Colorless to Light and Flawless to Included.

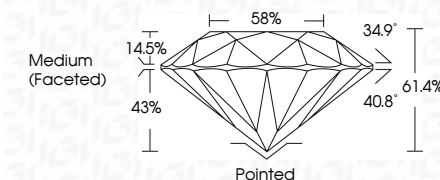


LABGROWN IGI LG537241341

LASERSCRIBE SM

Sample Image Used

July 12, 2022
IGI Report Number LG537241341
Description LABORATORY GROWN DIAMOND
Shape and Cutting Style ROUND BRILLIANT
Measurements 9.01 - 9.04 X 5.54 MM
GRADING RESULTS
Carat Weight 2.78 CARATS
Color Grade G
Clarity Grade VS 1
Cut Grade IDEAL



ADDITIONAL GRADING INFORMATION

Polish EXCELLENT
Symmetry EXCELLENT
Fluorescence NONE
Inscription(s) LABGROWN IGI LG537241341

Comments: HEARTS & ARROWS
This Laboratory Grown Diamond was created by Chemical Vapor Deposition (CVD) growth process and may include post-growth treatment.
Type IIa



IGI

Summary table of diamond specifications: IGI Report No, Round Brilliant, 9.01 - 9.04 X 5.54 MM, 2.78 CARATS, G, VS 1, IDEAL, 61.4%, 58%, Medium (Faceted), Pointed, EXCELLENT, EXCELLENT, NONE, LABGROWN IGI LG537241341.