



**ELECTRONIC COPY**

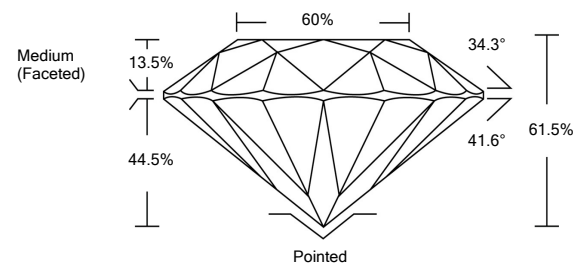
LG534223492

**LABORATORY GROWN DIAMOND REPORT**

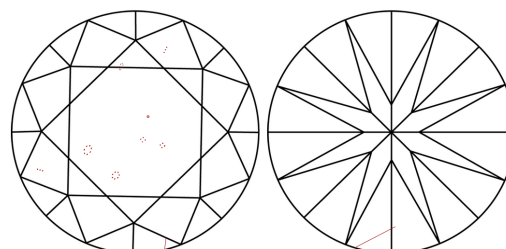
**GRADING SCALES**

|                             |                              |                             |                        |                   |           |   |
|-----------------------------|------------------------------|-----------------------------|------------------------|-------------------|-----------|---|
| COLOR GRADING SCALE         | CL                           | NC                          | FT                     | VL                | LT        |   |
|                             | COLORLESS D-F                | NEAR COLORLESS G-J          | FAINT K-M              | VERY LIGHT N-R    | LIGHT S-Z |   |
| CLARITY (10x) GRADING SCALE | FL                           | IF                          | VVS                    | VS                | SI        | I |
|                             | FLAWLESS INTERNALLY FLAWLESS | VERY VERY SLIGHTLY INCLUDED | VERY SLIGHTLY INCLUDED | SLIGHTLY INCLUDED | INCLUDED  |   |

**PROPORTIONS**

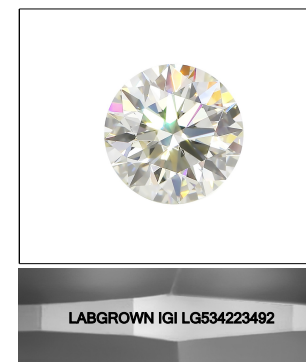


**CLARITY CHARACTERISTICS**



**KEY TO SYMBOLS**

Red symbols indicate internal characteristics.  
Green symbols indicate external characteristics.



**LASERSCRIBE<sup>SM</sup>**  
Sample Image Used

June 16, 2022

IGI Report Number **LG534223492**

Description **LABORATORY GROWN DIAMOND**

Shape and Cutting Style **ROUND BRILLIANT**

Measurements **10.22 - 10.27 X 6.31 MM**

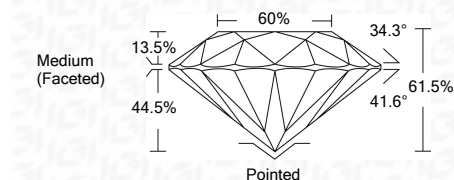
**GRADING RESULTS**

Carat Weight **4.06 CARATS**

Color Grade **F**

Clarity Grade **SI 1**

Cut Grade **EXCELLENT**



**ADDITIONAL GRADING INFORMATION**

Polish **EXCELLENT**

Symmetry **EXCELLENT**

Fluorescence **NONE**

Inscription(s) **LABGROWN IGI LG534223492**

Comments: This Laboratory Grown Diamond was created by Chemical Vapor Deposition (CVD) growth process and may include post-growth treatment.  
Type IIa

June 16, 2022

IGI Report Number **LG534223492**

Description **LABORATORY GROWN DIAMOND**

Shape and Cutting Style **ROUND BRILLIANT**

Measurements **10.22 - 10.27 X 6.31 MM**

**GRADING RESULTS**

Carat Weight **4.06 CARATS**

Color Grade **F**

Clarity Grade **SI 1**

Cut Grade **EXCELLENT**

**ADDITIONAL GRADING INFORMATION**

Polish **EXCELLENT**

Symmetry **EXCELLENT**

Fluorescence **NONE**

Inscription(s) **LABGROWN IGI LG534223492**

Comments: This Laboratory Grown Diamond was created by Chemical Vapor Deposition (CVD) growth process and may include post-growth treatment.  
Type IIa



**IGI**

|                            |  |   |      |           |       |     |                  |         |           |           |      |                          |
|----------------------------|--|---|------|-----------|-------|-----|------------------|---------|-----------|-----------|------|--------------------------|
| IGI Report No. LG534223492 | 4.06 CARATS  | F | SI 1 | EXCELLENT | 61.5% | 60% | Medium (Faceted) | Pointed | EXCELLENT | EXCELLENT | NONE | LABGROWN IGI LG534223492 |
| ROUND BRILLIANT            |  |   |      |           |       |     |                  |         |           |           |      |                          |
| 10.22 - 10.27 X 6.31 MM    |  |   |      |           |       |     |                  |         |           |           |      |                          |
| Carat Weight               |  |   |      |           |       |     |                  |         |           |           |      |                          |
| Color Grade                |  |   |      |           |       |     |                  |         |           |           |      |                          |
| Clarity Grade              |  |   |      |           |       |     |                  |         |           |           |      |                          |
| Cut Grade                  |  |   |      |           |       |     |                  |         |           |           |      |                          |
| Depth                      |  |   |      |           |       |     |                  |         |           |           |      |                          |
| Table                      |  |   |      |           |       |     |                  |         |           |           |      |                          |
| Girdle                     |  |   |      |           |       |     |                  |         |           |           |      |                          |
| Culet                      |  |   |      |           |       |     |                  |         |           |           |      |                          |
| Polish                     |  |   |      |           |       |     |                  |         |           |           |      |                          |
| Symmetry                   |  |   |      |           |       |     |                  |         |           |           |      |                          |
| Fluorescence               |  |   |      |           |       |     |                  |         |           |           |      |                          |
| Inscription(s)             |  |   |      |           |       |     |                  |         |           |           |      |                          |
| Comments:                  | This Laboratory Grown Diamond was created by Chemical Vapor Deposition (CVD) growth process and may include post-growth treatment.<br>Type IIa |   |      |           |       |     |                  |         |           |           |      |                          |