



**ELECTRONIC COPY**

**LABORATORY GROWN DIAMOND REPORT**

May 10, 2022  
 IGI Report Number **LG528240111**  
 Description **LABORATORY GROWN  
DIAMOND**  
 Shape and Cutting Style **CUSHION BRILLIANT**  
 Measurements **7.65 X 7.24 X 4.82 MM**

**GRADING RESULTS**

Carat Weight **2.04 CARATS**  
 Color Grade **I**  
 Clarity Grade **SI 2**

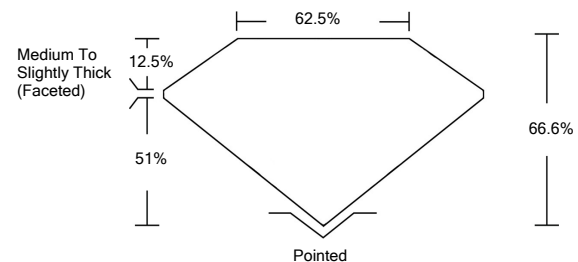
**ADDITIONAL GRADING INFORMATION**

Polish **EXCELLENT**  
 Symmetry **EXCELLENT**  
 Fluorescence **NONE**  
 Inscription(s) **LABGROWN IGI LG528240111**

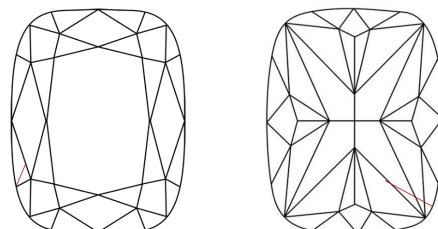
Comments: This Laboratory Grown Diamond was created by Chemical Vapor Deposition (CVD) growth process and may include post-growth treatment.  
 Type IIa

LG528240111

**PROPORTIONS**



**CLARITY CHARACTERISTICS**

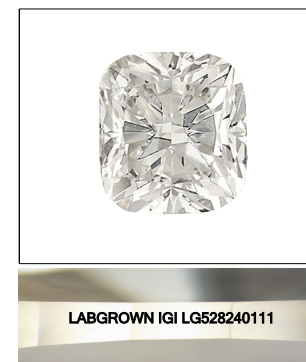


**KEY TO SYMBOLS**

Red symbols indicate internal characteristics.  
 Green symbols indicate external characteristics.

**GRADING SCALES**

COLOR GRADING SCALE	CL	NC	FT	VL	LT	
	COLORLESS D-F	NEAR COLORLESS G-J	FAINT K-M	VERY LIGHT N-R	LIGHT S-Z	
CLARITY (10x) GRADING SCALE	FL	IF	VVS	VS	SI	I
	FLAWLESS INTERNALLY FLAWLESS	VERY VERY SLIGHTLY INCLUDED	VERY SLIGHTLY INCLUDED	SLIGHTLY INCLUDED	INCLUDED	INCLUDED

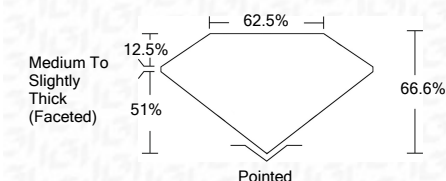


LABGROWN IGI LG528240111

LASERSCRIBE<sup>SM</sup>

Sample Image Used

May 10, 2022  
 IGI Report Number **LG528240111**  
 Description **LABORATORY GROWN  
DIAMOND**  
 Shape and Cutting Style **CUSHION BRILLIANT**  
 Measurements **7.65 X 7.24 X 4.82 MM**  
**GRADING RESULTS**  
 Carat Weight **2.04 CARATS**  
 Color Grade **I**  
 Clarity Grade **SI 2**



**ADDITIONAL GRADING INFORMATION**

Polish **EXCELLENT**  
 Symmetry **EXCELLENT**  
 Fluorescence **NONE**

Inscription(s) **LABGROWN IGI LG528240111**

Comments: This Laboratory Grown Diamond was created by Chemical Vapor Deposition (CVD) growth process and may include post-growth treatment.  
 Type IIa



**IGI**



May 10, 2022  
 IGI Report No. **LG528240111**  
**CUSHION BRILLIANT**  
**7.65 X 7.24 X 4.82 MM**  
 Carat Weight **2.04 CARATS**  
 Color Grade **I**  
 Clarity Grade **SI 2**  
 Depth **66.6%**  
 Table **62.5%**  
 Girdle **Medium To Slightly Thick (Faceted)**  
 Culet **Pointed**  
 Polish **EXCELLENT**  
 Symmetry **EXCELLENT**  
 Fluorescence **NONE**  
 Inscription(s) **LABGROWN IGI LG528240111**  
 Comments: **This Laboratory Grown Diamond was created by Chemical Vapor Deposition (CVD) growth process and may include post-growth treatment. Type IIa**