



ELECTRONIC COPY

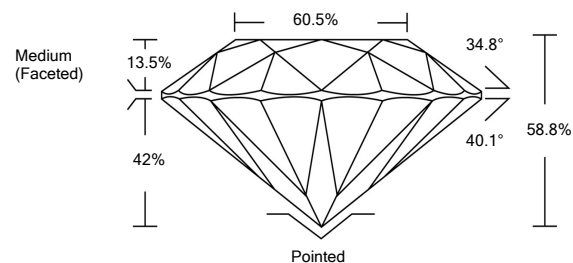
LABORATORY GROWN DIAMOND REPORT

LG526266879

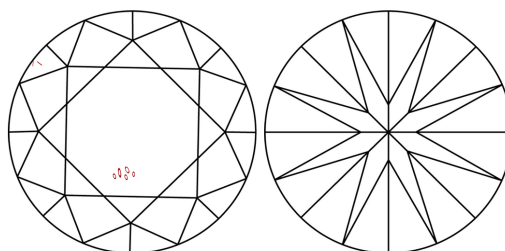
GRADING SCALES

COLOR GRADING SCALE	CL	NC	FT	VL	LT	
	COLORLESS D-F	NEAR COLORLESS G-J	FAINT K-M	VERY LIGHT N-R	LIGHT S-Z	
CLARITY (10x) GRADING SCALE	FL	IF	VVS	VS	SI	I
	FLAWLESS INTERNALLY FLAWLESS	VERY VERY SLIGHTLY INCLUDED	VERY SLIGHTLY INCLUDED	SLIGHTLY INCLUDED	INCLUDED	

PROPORTIONS

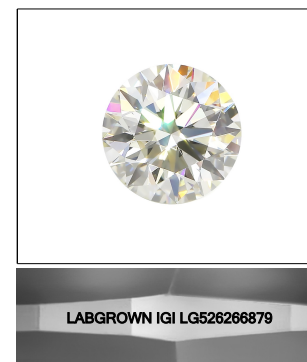


CLARITY CHARACTERISTICS



KEY TO SYMBOLS

Red symbols indicate internal characteristics.
Green symbols indicate external characteristics.



LASERSCRIBESM
Sample Image Used

May 4, 2022

IGI Report Number **LG526266879**

Description **LABORATORY GROWN DIAMOND**

Shape and Cutting Style **ROUND BRILLIANT**

Measurements **6.83 - 6.86 X 4.03 MM**

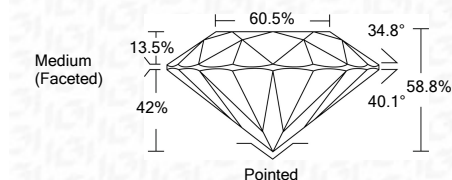
GRADING RESULTS

Carat Weight **1.16 CARAT**

Color Grade **H**

Clarity Grade **SI 1**

Cut Grade **EXCELLENT**



ADDITIONAL GRADING INFORMATION

Polish **EXCELLENT**

Symmetry **EXCELLENT**

Fluorescence **NONE**

Inscription(s) **LABGROWN IGI LG526266879**

Comments: As Grown - No indication of post-growth treatment.
This Laboratory Grown Diamond was created by High Pressure High Temperature (HPHT) growth process.
Type II



IGI

IGI Report No. LG526266879	1.16 CARAT	H	SI 1	EXCELLENT	60.5%	Medium (Faceted)	Pointed	EXCELLENT	EXCELLENT	LABGROWN IGI LG526266879
ROUND BRILLIANT										
6.83 - 6.86 X 4.03 MM										
Carat Weight										
Color Grade										
Clarity Grade										
Cut Grade										
Depth										
Table										
Girdle										
Culet										
Polish										
Symmetry										
Fluorescence										
Inscription(s)										
Comments:										
As Grown - No indication of post-growth treatment. This Laboratory Grown Diamond was created by High Pressure High Temperature (HPHT) growth process. Type II										

