



ELECTRONIC COPY

LABORATORY GROWN DIAMOND REPORT

April 27, 2022
 IGI Report Number **LG526259246**
 Description **LABORATORY GROWN
DIAMOND**
 Shape and Cutting Style **ROUND BRILLIANT**
 Measurements **7.42 - 7.46 X 4.55 MM**

GRADING RESULTS

Carat Weight **1.54 CARAT**
 Color Grade **G**
 Clarity Grade **VS 2**
 Cut Grade **IDEAL**

ADDITIONAL GRADING INFORMATION

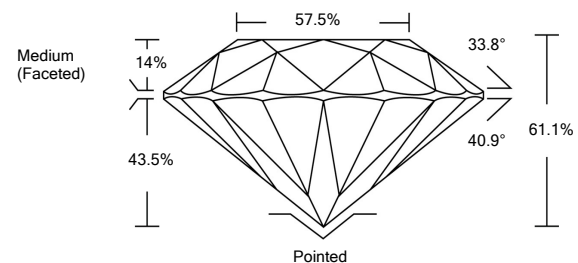
Polish **EXCELLENT**
 Symmetry **EXCELLENT**
 Fluorescence **NONE**

Inscription(s) **LABGROWN IGI LG526259246**

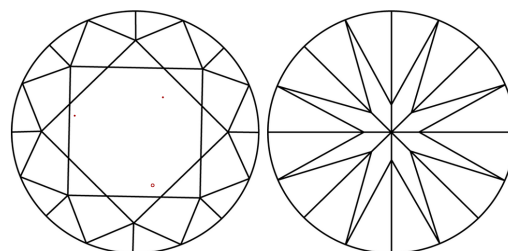
Comments: This Laboratory Grown Diamond was created by Chemical Vapor Deposition (CVD) growth process and may include post-growth treatment.
 Type IIa

LG526259246

PROPORTIONS



CLARITY CHARACTERISTICS



KEY TO SYMBOLS

Red symbols indicate internal characteristics.
 Green symbols indicate external characteristics.

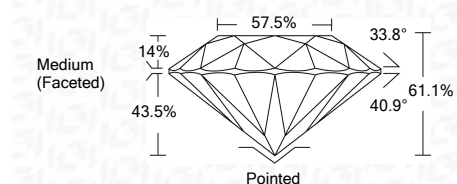
GRADING SCALES

| COLOR GRADING SCALE | CL | NC | FT | VL | LT | |
|-----------------------------|------------------------------|-----------------------------|------------------------|-------------------|-----------|---|
| | COLORLESS D-F | NEAR COLORLESS G-J | FAINT K-M | VERY LIGHT N-R | LIGHT S-Z | |
| CLARITY (10x) GRADING SCALE | FL | IF | VVS | VS | SI | I |
| | FLAWLESS INTERNALLY FLAWLESS | VERY VERY SLIGHTLY INCLUDED | VERY SLIGHTLY INCLUDED | SLIGHTLY INCLUDED | INCLUDED | |

April 27, 2022
 IGI Report Number **LG526259246**
 Description **LABORATORY GROWN
DIAMOND**
 Shape and Cutting Style **ROUND BRILLIANT**
 Measurements **7.42 - 7.46 X 4.55 MM**

GRADING RESULTS

Carat Weight **1.54 CARAT**
 Color Grade **G**
 Clarity Grade **VS 2**
 Cut Grade **IDEAL**

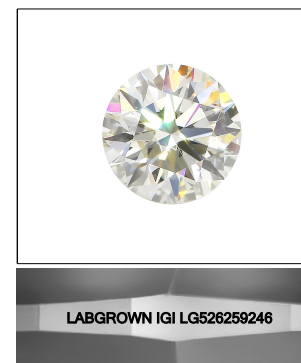


ADDITIONAL GRADING INFORMATION

Polish **EXCELLENT**
 Symmetry **EXCELLENT**
 Fluorescence **NONE**

Inscription(s) **LABGROWN IGI LG526259246**

Comments: This Laboratory Grown Diamond was created by Chemical Vapor Deposition (CVD) growth process and may include post-growth treatment.
 Type IIa



LASERSCRIBESM
 Sample Image Used



IGI

| | | | |
|---|-------------------|--------------|---------------------|
| IGI Report No. LG526259246 | 1.54 CARAT | G | Pointed |
| ROUND BRILLIANT | VS 2 | IDEAL | EXCELLENT |
| Measurements 7.42 - 7.46 X 4.55 MM | 61.1% | 57.5% | EXCELLENT |
| Carat Weight | Medium (Faceted) | | LABGROWN IGI |
| Color Grade | | | LG526259246 |
| Clarity Grade | | | |
| Cut Grade | | | |
| Depth | | | |
| Table | | | |
| Girdle | | | |
| Culet | | | |
| Polish | | | |
| Symmetry | | | |
| Fluorescence | | | |
| Inscription(s) | | | |
| Comments: | | | |

This Laboratory Grown Diamond was created by Chemical Vapor Deposition (CVD) growth process and may include post-growth treatment.
 Type IIa