

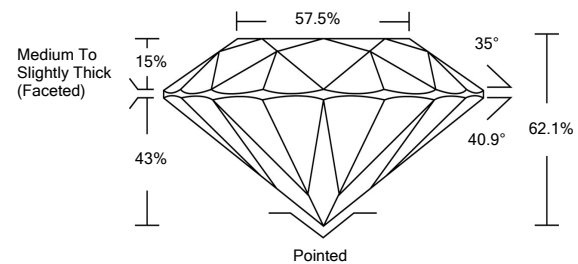


ELECTRONIC COPY

LABORATORY GROWN DIAMOND REPORT

LG522252934

PROPORTIONS



GRADING SCALES

COLOR GRADING SCALE	CL	NC	FT	VL	LT	
	COLORLESS D-F	NEAR COLORLESS G-J	FAINT K-M	VERY LIGHT N-R	LIGHT S-Z	
CLARITY (10x) GRADING SCALE	FL	IF	VVS	VS	SI	I
	FLAWLESS INTERNALLY FLAWLESS	VERY VERY SLIGHTLY INCLUDED	VERY SLIGHTLY INCLUDED	SLIGHTLY INCLUDED	INCLUDED	

March 27, 2022

IGI Report Number

LG522252934

Description

LABORATORY GROWN DIAMOND

Shape and Cutting Style

ROUND BRILLIANT

Measurements

6.43 - 6.45 X 4.00 MM

GRADING RESULTS

Carat Weight

1.03 CARAT

Color Grade

F

Clarity Grade

VS 2

Cut Grade

IDEAL

March 27, 2022

IGI Report Number

LG522252934

Description

LABORATORY GROWN DIAMOND

Shape and Cutting Style

ROUND BRILLIANT

Measurements

6.43 - 6.45 X 4.00 MM

GRADING RESULTS

Carat Weight

1.03 CARAT

Color Grade

F

Clarity Grade

VS 2

Cut Grade

IDEAL

ADDITIONAL GRADING INFORMATION

Polish

EXCELLENT

Symmetry

EXCELLENT

Fluorescence

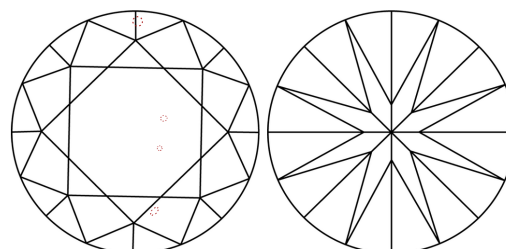
NONE

Inscription(s)

LABGROWN IGI LG522252934

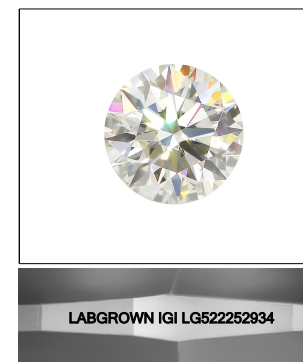
Comments: This Laboratory Grown Diamond was created by Chemical Vapor Deposition (CVD) growth process and may include post-growth treatment.
Type IIa

CLARITY CHARACTERISTICS



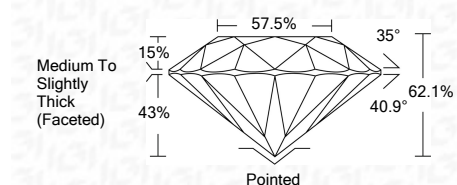
KEY TO SYMBOLS

Red symbols indicate internal characteristics.
Green symbols indicate external characteristics.



LASERSCRIBESM

Sample Image Used



ADDITIONAL GRADING INFORMATION

Polish

EXCELLENT

Symmetry

EXCELLENT

Fluorescence

NONE

Inscription(s)

LABGROWN IGI LG522252934

Comments: This Laboratory Grown Diamond was created by Chemical Vapor Deposition (CVD) growth process and may include post-growth treatment.
Type IIa



IGI

March 27, 2022
IGI Report No. LG522252934
ROUND BRILLIANT

6.43 - 6.45 X 4.00 MM
Carat Weight

1.03 CARAT

Color Grade

F

Clarity Grade

VS 2

Cut Grade

IDEAL

Depth

62.1%

Table

57.5%

Girdle

Medium To Slightly Thick (Faceted)

Culet

Pointed

Polish

EXCELLENT

Symmetry

EXCELLENT

Fluorescence

NONE

Inscription(s)

LABGROWN IGI LG522252934

Comments: This Laboratory Grown Diamond was created by Chemical Vapor Deposition (CVD) growth process and may include post-growth treatment.
Type IIa