

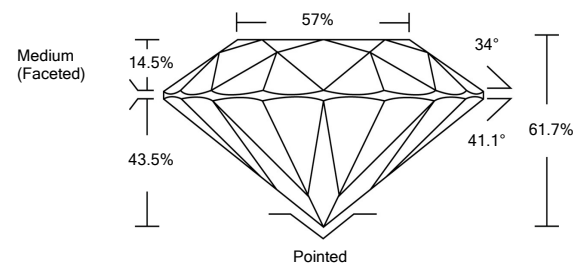


ELECTRONIC COPY

LABORATORY GROWN DIAMOND REPORT

LG517201242

PROPORTIONS



GRADING SCALES

COLOR GRADING SCALE	CL	NC	FT	VL	LT	
	COLORLESS D-F	NEAR COLORLESS G-J	FAINT K-M	VERY LIGHT N-R	LIGHT S-Z	
CLARITY (10x) GRADING SCALE	FL	IF	VVS	VS	SI	I
	FLAWLESS INTERNALLY FLAWLESS	VERY VERY SLIGHTLY INCLUDED	VERY SLIGHTLY INCLUDED	SLIGHTLY INCLUDED		INCLUDED

February 24, 2022

IGI Report Number

LG517201242

Description

**LABORATORY GROWN
DIAMOND**

Shape and Cutting Style

ROUND BRILLIANT

Measurements

6.48 - 6.52 X 4.01 MM

GRADING RESULTS

Carat Weight

1.04 CARAT

Color Grade

E

Clarity Grade

VS 2

Cut Grade

IDEAL

February 24, 2022

IGI Report Number

LG517201242

Description

**LABORATORY GROWN
DIAMOND**

Shape and Cutting Style

ROUND BRILLIANT

Measurements

6.48 - 6.52 X 4.01 MM

GRADING RESULTS

Carat Weight

1.04 CARAT

Color Grade

E

Clarity Grade

VS 2

Cut Grade

IDEAL

ADDITIONAL GRADING INFORMATION

Polish

EXCELLENT

Symmetry

EXCELLENT

Fluorescence

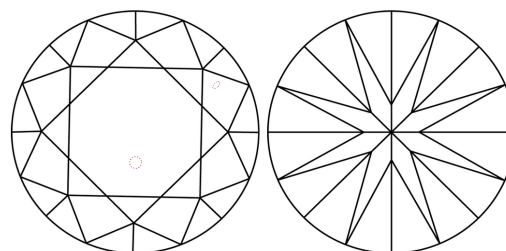
NONE

Inscription(s)

LABGROWN IGI LG517201242

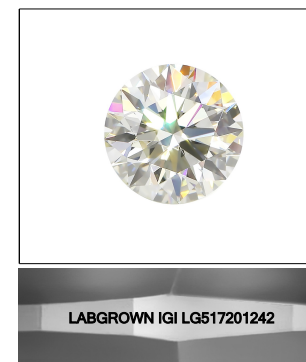
Comments: This Laboratory Grown Diamond was created by Chemical Vapor Deposition (CVD) growth process and may include post-growth treatment.
Type IIa

CLARITY CHARACTERISTICS



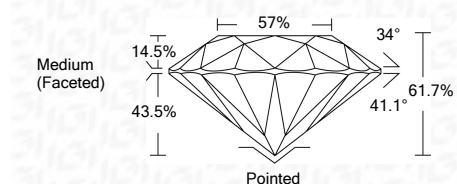
KEY TO SYMBOLS

Red symbols indicate internal characteristics.
Green symbols indicate external characteristics.



LASERSCRIBESM

Sample Image Used



ADDITIONAL GRADING INFORMATION

Polish

EXCELLENT

Symmetry

EXCELLENT

Fluorescence

NONE

Inscription(s)

LABGROWN IGI LG517201242

Comments: This Laboratory Grown Diamond was created by Chemical Vapor Deposition (CVD) growth process and may include post-growth treatment.
Type IIa



IGI



February 24, 2022	IGI Report No. LG517201242	1.04 CARAT	E	VS 2	IDEAL	61.7%	57%	Medium (Faceted)	Pointed
IGI Report No. LG517201242	ROUND BRILLIANT	6.48 - 6.52 X 4.01 MM							EXCELLENT
	Carat Weight								EXCELLENT
	Color Grade								NONE
	Clarity Grade								LABGROWN IGI LG517201242
	Cut Grade								Inscription(s)
	Depth								Comments: This Laboratory Grown Diamond was created by Chemical Vapor Deposition (CVD) growth process and may include post-growth treatment. Type IIa
	Table								
	Girdle								
	Culet								
	Polish								
	Symmetry								
	Fluorescence								
	Inscription(s)								