

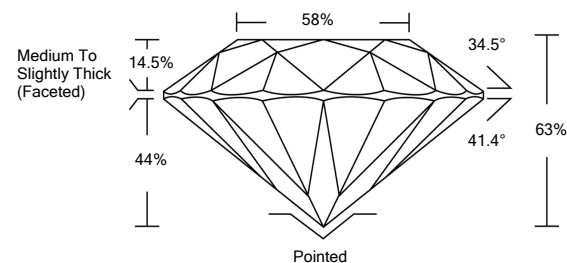


ELECTRONIC COPY

LABORATORY GROWN DIAMOND REPORT

LG522252945

PROPORTIONS



GRADING SCALES

| | | | | | | |
|-----------------------------|------------------------------|-----------------------------|------------------------|-------------------|-----------|---|
| COLOR GRADING SCALE | CL | NC | FT | VL | LT | |
| | COLORLESS D-F | NEAR COLORLESS G-J | FAINT K-M | VERY LIGHT N-R | LIGHT S-Z | |
| CLARITY (10x) GRADING SCALE | FL | IF | VVS | VS | SI | I |
| | FLAWLESS INTERNALLY FLAWLESS | VERY VERY SLIGHTLY INCLUDED | VERY SLIGHTLY INCLUDED | SLIGHTLY INCLUDED | INCLUDED | |

March 27, 2022
 IGI Report Number **LG522252945**
 Description **LABORATORY GROWN DIAMOND**
 Shape and Cutting Style **ROUND BRILLIANT**
 Measurements **6.36 - 6.40 X 4.02 MM**

March 27, 2022
 IGI Report Number **LG522252945**
 Description **LABORATORY GROWN DIAMOND**
 Shape and Cutting Style **ROUND BRILLIANT**
 Measurements **6.36 - 6.40 X 4.02 MM**
 Grading Results
 Carat Weight **1.02 CARAT**
 Color Grade **F**
 Clarity Grade **SI 1**
 Cut Grade **EXCELLENT**

GRADING RESULTS

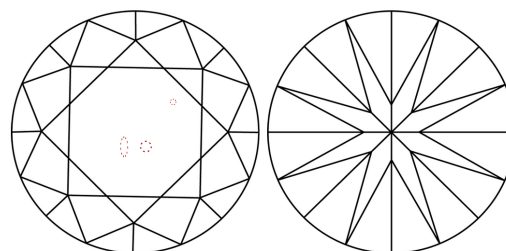
Carat Weight **1.02 CARAT**
 Color Grade **F**
 Clarity Grade **SI 1**
 Cut Grade **EXCELLENT**

ADDITIONAL GRADING INFORMATION

Polish **EXCELLENT**
 Symmetry **EXCELLENT**
 Fluorescence **NONE**
 Inscription(s) **LABGROWN IGI LG522252945**

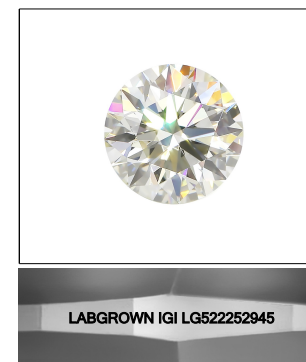
Comments: This Laboratory Grown Diamond was created by Chemical Vapor Deposition (CVD) growth process and may include post-growth treatment.
 Type IIa

CLARITY CHARACTERISTICS

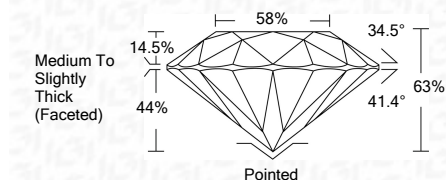


KEY TO SYMBOLS

Red symbols indicate internal characteristics.
 Green symbols indicate external characteristics.



LASERSCRIBESM
 Sample Image Used



ADDITIONAL GRADING INFORMATION

Polish **EXCELLENT**
 Symmetry **EXCELLENT**
 Fluorescence **NONE**
 Inscription(s) **LABGROWN IGI LG522252945**

Comments: This Laboratory Grown Diamond was created by Chemical Vapor Deposition (CVD) growth process and may include post-growth treatment.
 Type IIa



IGI

March 27, 2022
 IGI Report No. **LG522252945**
ROUND BRILLIANT
6.36 - 6.40 X 4.02 MM
 Carat Weight **1.02 CARAT**
 Color Grade **F**
 Clarity Grade **SI 1**
 Depth **EXCELLENT**
 Table **63%**
 Girdle **88%**
 Culet **Medium To Slightly Thick (Faceted)**
 Polish **Pointed**
 Symmetry **EXCELLENT**
 Fluorescence **EXCELLENT**
 Inscription(s) **NONE**
 IGI Report No. **LABGROWN IGI LG522252945**
 Comments: This Laboratory Grown Diamond was created by Chemical Vapor Deposition (CVD) growth process and may include post-growth treatment.
 Type IIa