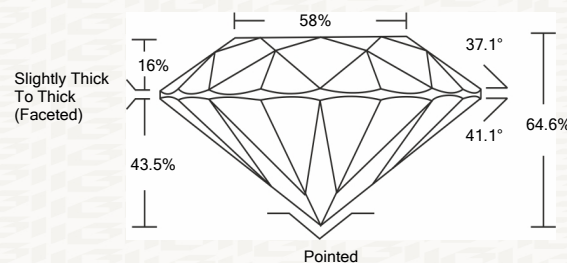




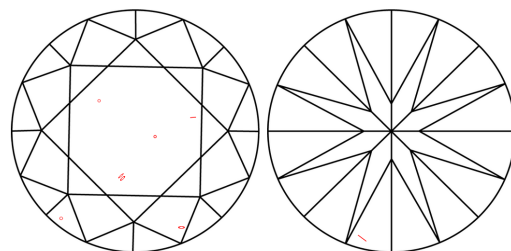
IGI GEMOLOGICAL REPORT

ADDITIONAL INFORMATION

PROPORTIONS



CLARITY CHARACTERISTICS



KEY TO SYMBOLS

Red symbols indicate internal characteristics. Green symbols indicate external characteristics.

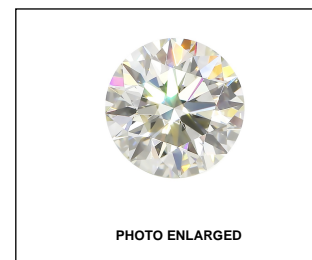
This Report is subject to the terms and conditions

© IGI 2000, edition 2019 all rights reserved.

GRADING SCALES

Table with 2 rows and 5 columns: COLOR GRADING SCALE (CL, NC, FT, VLT, LT) and CLARITY (10x) GRADING SCALE (FL, IF, VVS, VS, SI, I).

The laboratory grown diamond described in this Report (Report) has been graded, tested, analyzed, examined and/or inscribed by International Gemological Institute (I.G.I.).

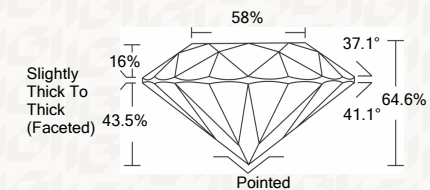


LASERSCRIBE SM



IGI LABORATORY GROWN DIAMOND GRADING REPORT

12/07/2020 IGI Report Number LG451057510 Shape and Cutting Style ROUND BRILLIANT Measurements 6.24 - 6.28 X 4.05 MM GRADING RESULTS Carat Weight 1.01 CARAT Color Grade E Clarity Grade VS 2 Cut Grade VERY GOOD



ADDITIONAL GRADING INFORMATION

Polish EXCELLENT Symmetry EXCELLENT Fluorescence NONE Inscription(s) LABGROWN IGI LG451057510

Comments: This Laboratory grown diamond was created by high pressure high temperature process (HPHT).



IGI



Summary of report details including report number, carat weight, color grade, clarity grade, cut grade, and grading results.