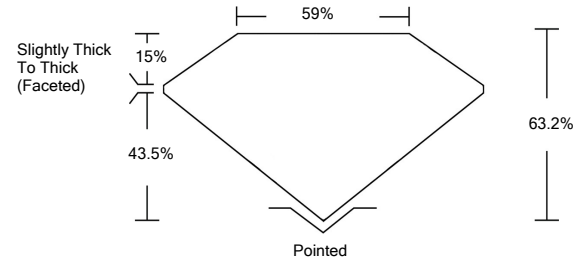




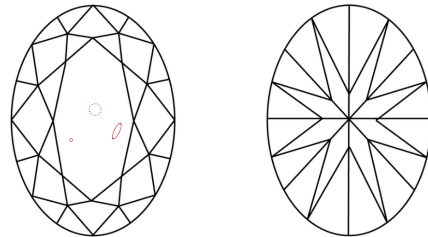
LG485146795

LABORATORY GROWN DIAMOND REPORT

PROPORTIONS



CLARITY CHARACTERISTICS



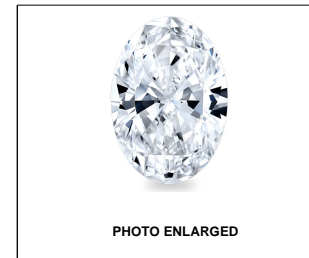
KEY TO SYMBOLS

Red symbols indicate internal characteristics. Green symbols indicate external characteristics.

GRADING SCALES

Table with 5 columns for Color Grading Scale (CL to LT) and Clarity (10x) Grading Scale (FL to I). Includes descriptions like 'COLORLESS D-F', 'NEAR COLORLESS G-J', etc.

The laboratory grown diamond described in this Report (Report) has been graded, tested, analyzed, examined and/or inscribed by International Gemological Institute (IGI). A laboratory grown diamond is one that has essentially the same chemical, physical and optical properties as a mined diamond...



LASERSCRIBESM

07/12/2021

IGI Report Number LG485146795

Shape and Cutting Style OVAL BRILLIANT

Measurements 9.36 X 6.55 X 4.14 MM

GRADING RESULTS

Carat Weight 1.58 CARAT

Color Grade D

Clarity Grade SI 1

ADDITIONAL GRADING INFORMATION

Polish EXCELLENT

Symmetry EXCELLENT

Fluorescence NONE

Inscription(s) LABGROWN IGI LG485146795

Comments: As Grown - No indication of post-growth treatment. This Laboratory Grown Diamond was created by High Pressure High Temperature (HPHT) growth process. Type II



IGI

07/12/2021 IGI Report No. LG485146795 OVAL BRILLIANT 9.36 X 6.55 X 4.14 MM 1.58 CARAT D SI 1 63.2% 59% Slightly Thick To Thick (Faceted) Pointed EXCELLENT EXCELLENT NONE LABGROWN IGI LG485146795

As Grown - No indication of post-growth treatment. This Laboratory Grown Diamond was created by High Pressure High Temperature (HPHT) growth process. Type II

